

**CLARK COUNTY SURVEYOR'S STATEMENT**

I, JAMES L. MARLETT JR., COUNTY SURVEYOR, CLARK COUNTY, NEVADA HAVE EXAMINED THIS MAP FOR TECHNICAL ACCURACY AND COMPLIANCE WITH APPLICABLE NRS AND NAC STATUTES.

*(Signature)*  
 JAMES L. MARLETT JR., P.L.S.  
 CLARK COUNTY SURVEYOR  
 NEVADA CERTIFICATE NO. 13386

**BASIS OF BEARING STATEMENT**

BEARINGS SHOWN HEREON ARE GRID BEARINGS BASED ON NAD 83 2011 EPOCH 2010.00, REFERENCE FRAME AS DETERMINED BY THE NATIONAL GEODETIC SURVEY (N.G.S.), NEVADA STATE PLANE COORDINATE SYSTEM EAST ZONE (2701).

**LAS VEGAS VALLEY WATER DISTRICT GPS REFERENCE STATION NETWORK COORDINATE TABLE**

STATION IDENTIFICATION	NAD 83 (2011) EPOCH 2010.0			STATE PLANE NEVADA EAST ZONE (2701)		GRID CONVERSION US SURVEY FEET		
	POINT NO.	DESCRIPTION	LATITUDE	LONGITUDE	ELLIPSOID HT (M)	SP NORTHING GRID (M)	SP EASTING GRID (M)	NORTHING
▲ 1	NVCA	36°13'11.19384"	-115°10'19.35485"	646.169	8163133.035	236976.684	26781878.97	777481.00
▲ 2	NVBM	35°58'11.31993"	-115°09'27.00102"	713.240	8135404.913	238405.576	26690907.62	782168.96
▲ 3	NVTP	36°05'57.01243"	-115°19'44.48391"	845.896	8149703.222	222898.520	26737817.99	731292.90
▲ 4	NVLM	36°04'10.75708"	-114°48'47.49452"	362.802	8146673.074	269371.294	26727876.58	883762.32
▲ 5	NVLA	35°10'14.23886"	-114°34'47.19504"	162.881	8047120.238	291414.746	26401260.32	956083.21
▲ 6	NVPI	35°57'22.58601"	-115°29'44.13024"	2492.433	8133822.728	207914.681	26685716.74	682133.41
▲ 7	NVPI	37°56'13.34661"	-114°27'03.10133"	1794.201	8354220.963	299544.411	27408806.61	982755.29
▲ 8	NVSV	38°55'00.49295"	-114°24'09.60587"	1776.747	8463026.139	302387.737	27765778.26	992083.77
● 9	CCWR	36°06'36.58654"	-115°02'19.34080"	495.416	8151030.273	249032.566	26742171.82	817034.34
● 10	CLV1	36°12'52.56600"	-115°15'29.42428"	704.107	8162529.517	229235.105	26779898.92	752082.17
● 11	NVCO	36°47'43.45680"	-114°53'31.25783"	644.248	8227147.769	261694.042	26991900.64	858574.54
● 12	NVGL	36°40'24.36583"	-114°31'22.16568"	524.981	8213914.871	294791.974	26948485.70	967163.33
● 13	NVAL	37°22'11.75720"	-115°09'32.25177"	1041.004	8290763.589	237586.830	27200613.54	779482.79
● 14	NVSL	35°27'57.25761"	-114°55'17.17212"	1053.673	8079617.713	260073.278	26507879.12	853257.08

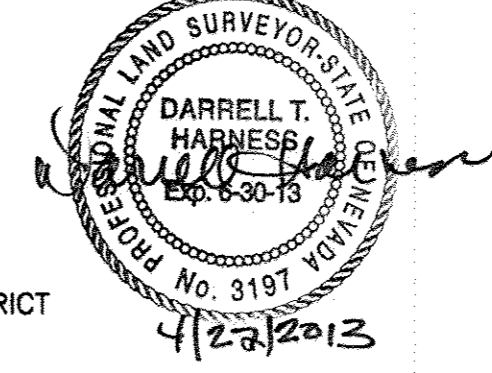
**BASILINE BEARING TABLE**

BASILINE	DISTANCE (GRID USFT)	BEARING (GRID)	BASILINE	DISTANCE (GRID USFT)	BEARING (GRID)
1-11	225133.88	N21°06'45"E	6-2	100170.13	N87°01'46"E
1-12	252462.26	N48°42'20"E	6-3	71632.36	N43°20'09"E
1-13	418739.36	N00°16'26"E	6-4	205989.49	N78°11'23"E
2-1	91092.06	N02°57'00"W	6-9	146237.61	N67°17'28"E
2-3	69202.29	N47°19'20"W	6-10	117316.30	N36°36'04"E
2-4	108110.66	N70°00'14"E	6-11	353383.72	N29°57'11"E
2-9	61996.88	N34°13'12"E	6-13	524018.72	N10°42'23"E
2-10	93939.70	N18°40'47"W	7-8	357093.52	N01°29'49"E
2-11	310539.23	N14°14'36"E	9-1	56045.73	N44°53'20"W
3-9	85851.92	N87°05'35"E	9-10	75114.04	N59°51'00"W
3-10	46936.12	N26°17'27"E	9-11	253160.17	N09°26'39"E
3-11	284180.59	N26°36'30"E	9-12	255155.11	N36°02'32"E
3-13	465297.75	N05°56'41"E	10-1	25475.89	N85°32'32"E
4-1	119213.99	N63°03'52"W	10-11	237245.34	N26°40'16"E
4-3	152793.18	N86°16'10"W	11-7	435007.41	N16°35'13"E
4-9	68242.05	N77°54'30"W	11-13	223196.28	N20°45'15"W
4-10	141583.85	N68°26'34"W	12-7	460584.89	N01°56'24"E
4-11	265222.79	N05°26'58"W	12-11	116946.07	N68°12'29"W
4-12	235847.65	N20°42'33"E	12-13	314312.64	N36°39'49"W
5-1	420439.42	N25°08'17"W	13-7	290970.89	N44°18'53"E
5-2	337848.67	N30°58'55"W	13-8	603829.72	N20°36'54"E
5-3	404724.29	N33°44'22"W	14-1	284284.95	N15°27'33"W
5-4	334527.27	N12°29'07"W	14-2	196349.06	N21°13'34"W
5-6	394922.71	N43°55'20"W	14-3	260282.82	N27°56'33"W
5-12	547337.55	N01°09'36"E	14-4	222102.35	N07°53'40"E
5-14	148124.21	N43°57'45"W	14-6	246798.56	N43°53'52"W
6-1	135419.12	N44°45'23"E			

**SURVEYOR'S CERTIFICATE**

I, DARRELL T. HARNISS, A PROFESSIONAL LAND SURVEYOR, REGISTERED IN THE STATE OF NEVADA, ACTING AS AGENT FOR LAS VEGAS VALLEY WATER DISTRICT, CERTIFY THAT:

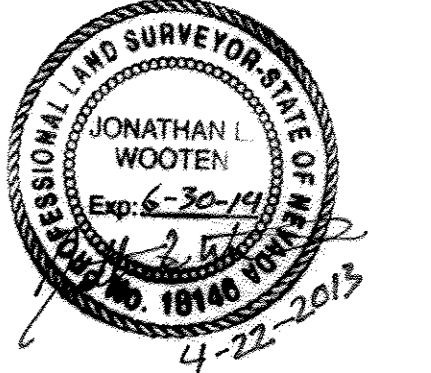
- THIS PLAT REPRESENTS THE RESULTS OF A SURVEY CONDUCTED UNDER MY SUPERVISION AT THE INSTANCE OF LAS VEGAS VALLEY WATER DISTRICT.
- THE LANDS SURVEYED LIE WITHIN THE FOLLOWING:  
 TOWNSHIP 20 SOUTH RANGE 61 EAST - NVCA  
 TOWNSHIP 23 SOUTH RANGE 61 EAST - NVBM  
 TOWNSHIP 21 SOUTH RANGE 59 EAST - NVTP  
 TOWNSHIP 22 SOUTH RANGE 64 EAST - NVLM  
 TOWNSHIP 32 SOUTH RANGE 66 EAST - NVLA  
 TOWNSHIP 23 SOUTH RANGE 58 EAST - NVPO  
 TOWNSHIP 01 NORTH RANGE 67 EAST - NVPI  
 TOWNSHIP 12 NORTH RANGE 67 EAST - NVSV  
 TOWNSHIP 21 SOUTH RANGE 62 EAST - CCWR  
 TOWNSHIP 20 SOUTH RANGE 60 EAST - CLV1  
 TOWNSHIP 13 SOUTH RANGE 63 EAST - NVCO  
 TOWNSHIP 14 SOUTH RANGE 67 EAST - NVGL  
 TOWNSHIP 07 SOUTH RANGE 61 EAST - NVAL  
 TOWNSHIP 28 SOUTH RANGE 63 EAST - NVSL
- THIS PLAT COMPLIES WITH APPLICABLE STATUTES OF THIS STATE AND ANY LOCAL ORDINANCES IN EFFECT ON THE DATE THAT THE SURVEY WAS COMPLETED, AND THE SURVEY WAS CONDUCTED IN ACCORDANCE WITH CHAPTER 625 OF THE NEVADA ADMINISTRATIVE CODE.
- THE MONUMENTS DEPICTED ON THE PLAT ARE OF THE CHARACTER SHOWN, OCCUPY THE POSITIONS INDICATED, AND ARE OF SUFFICIENT DURABILITY.



**SURVEYOR'S CERTIFICATE**

I, JONATHAN L. WOOTEN, A PROFESSIONAL LAND SURVEYOR, REGISTERED IN THE STATE OF NEVADA, ACTING AS AGENT FOR LAS VEGAS VALLEY WATER DISTRICT, CERTIFY THAT:

- THIS PLAT REPRESENTS THE RESULTS OF A SURVEY CONDUCTED UNDER MY SUPERVISION AT THE INSTANCE OF LAS VEGAS VALLEY WATER DISTRICT.
- THE LANDS SURVEYED LIE WITHIN THE FOLLOWING:  
 TOWNSHIP 20 SOUTH RANGE 61 EAST - NVCA  
 TOWNSHIP 23 SOUTH RANGE 61 EAST - NVBM  
 TOWNSHIP 21 SOUTH RANGE 59 EAST - NVTP  
 TOWNSHIP 22 SOUTH RANGE 64 EAST - NVLM  
 TOWNSHIP 32 SOUTH RANGE 66 EAST - NVLA  
 TOWNSHIP 23 SOUTH RANGE 58 EAST - NVPO  
 TOWNSHIP 01 NORTH RANGE 67 EAST - NVPI  
 TOWNSHIP 12 NORTH RANGE 67 EAST - NVSV  
 TOWNSHIP 21 SOUTH RANGE 62 EAST - CCWR  
 TOWNSHIP 20 SOUTH RANGE 60 EAST - CLV1  
 TOWNSHIP 13 SOUTH RANGE 63 EAST - NVCO  
 TOWNSHIP 14 SOUTH RANGE 67 EAST - NVGL  
 TOWNSHIP 07 SOUTH RANGE 61 EAST - NVAL  
 TOWNSHIP 28 SOUTH RANGE 63 EAST - NVSL
- THIS PLAT COMPLIES WITH APPLICABLE STATUTES OF THIS STATE AND ANY LOCAL ORDINANCES IN EFFECT ON THE DATE THAT THE SURVEY WAS COMPLETED, AND THE SURVEY WAS CONDUCTED IN ACCORDANCE WITH CHAPTER 625 OF THE NEVADA ADMINISTRATIVE CODE.
- THE MONUMENTS DEPICTED ON THE PLAT ARE OF THE CHARACTER SHOWN, OCCUPY THE POSITIONS INDICATED, AND ARE OF SUFFICIENT DURABILITY.



**NOTES**

THIS SURVEY OF THE LAS VEGAS VALLEY WATER DISTRICT GPS REFERENCE STATION NETWORK WAS EFFECTED TO MEMORIALIZE THE APPLICATION AND ADJUSTMENT OF THE NATIONAL GEODETIC SURVEY (N.G.S.) REALIZATION OF THE NAD 83 (2011) EPOCH 2010.00 REFERENCE FRAME.

THE STATIONS IDENTIFIED HEREON BY A SOLID TRIANGLE ▲ ARE NATIONAL GEODETIC SURVEY (N.G.S.) CONTINUOUSLY OPERATING REFERENCE STATIONS (C.O.R.S.) AND THE POSITIONAL VALUES SHOWN HEREON ARE REPRESENTATIVE OF THOSE CALCULATED AND PUBLISHED BY THE NATIONAL GEODETIC SURVEY (N.G.S.).

THE LAS VEGAS VALLEY WATER DISTRICT GPS REFERENCE STATION NETWORK IS COMPRISED OF 14 STATIONS, 8 OF WHICH ARE NATIONAL GEODETIC SURVEY (N.G.S.) CONTINUOUSLY OPERATING REFERENCE STATIONS (C.O.R.S.).

THE POSITIONAL VALUES OF THE REMAINING 6 STATIONS, IDENTIFIED HEREON BY A SOLID CIRCLE ● HAVE BEEN DETERMINED USING GPS POST PROCESSING TECHNIQUES OF MULTIPLE 24 HOUR GPS DATA SETS COLLECTED IN DECEMBER OF 2012 AND JANUARY OF 2013. THE ABOVE REFERENCED C.O.R.S. PUBLISHED POSITIONS WERE HELD FIXED AND A NETWORK ADJUSTMENT WAS APPLIED TO THE POST PROCESSED VALUES. THE RESULTING NETWORK ADJUSTED VALUES FOR THESE 6 STATIONS ARE SHOWN HEREON.

**RECORD OF SURVEY**  
 FOR  
**LAS VEGAS VALLEY WATER DISTRICT**  
**GPS REFERENCE STATION NETWORK**

NO. 01933  
 FILED AT THE REQUEST OF:  
 LAS VEGAS VALLEY WATER DISTRICT  
 DATE 04/22/2013 AT 1:19 PM.  
 FILE 188 PAGE 77  
 OF SURVEYS

LAS VEGAS VALLEY WATER DISTRICT  
 "PEOPLE LEADING THE WAY"  
 1001 S. VALLEY VIEW BOULEVARD  
 LAS VEGAS, NEVADA 89153  
 (702) 870-2011

CONTRACT 13N0001001  
 LOCATION EASTERN NEVADA  
 NAME GPS NETWORK SHEET  
 DATE 4/22/13  
 DRAWN J.L.W.  
 CK'D D.T.H.  
 H.SCALE 1" = 70,000'  
 V.SCALE N/A

OFFICIAL RECORDS BOOK NO. CLARK COUNTY NEVADA RECORDS  
 DEBBIE CONWAY, RECORDER  
 FEE \$2900 DEPUTY M.G.M.