

FLOYD LAMB PARK
EXISTING CONDITIONS

OVERALL CONTEXT

SCALE 1:16,000

This map shows the full scope of the project including the Park Core and Bureau of Land Management Lands

- PROJECT BOUNDARY
- CONSERVATION TRANSFER AGREEMENT AREA (CTA)
- MOCCASIN ROAD EXTENTION (PLANNED PARKWAY)
- PARK CORE AREA
- EQUESTRIAN PARK BOUNDARY
- FUTURE ENVIRONMENTAL ENHANCEMENT AREAS



GREENWAYS
INCORPORATED

JWZUNINO & ASSOCIATES
LANDSCAPE ARCHITECTURE • LAND PLANNING
RESORT PLANNING • GOLF COURSE DESIGN



A

AERIAL VIEW A

Looking south, an aerial view of the Park Core Area illustrates the “oasis” like appeal of the lakes and vegetation contrasted with the sparse surrounding BLM lands and encroaching development. (Photo courtesy of the City of Las Vegas).



B

AERIAL VIEW B

An aerial view of the northern half of Mulberry Lake gives a sense of the proximity of Mulberry Lake to Group Picnic Area #5. This picnic area can accommodate up to 500 visitors and is easy to control since it is separate from the other park facilities and has its own parking lot. (Photo courtesy of the City of Las Vegas).



C

TULE SPRINGS LAKE

The Spring Mountains rise in the distance across Tule Springs Lake which is a popular place for fishing, watching wildlife, and walking.








FLOYD LAMB PARK
EXISTING CONDITIONS

PARK CORE AREA

SCALE 1:3,000

This map shows the Park Core Area including the adjacent Skeet Shooting Range and adjacent residential development. Three views are shown at left.





16 FOREMAN’S HOUSE

Public fishing clinics and other activities are often held in the Foreman’s House. Plans for renovating it into a Visitor’s Center were conceptualized in 1997 but never implemented.



25 WATER TOWER

The Water Tower is the most prominent structure of the Park. Due to its height, it could be a great opportunity for an observation tower however, much renovation is needed to make the structure safe for public use.



32 HAY BARN

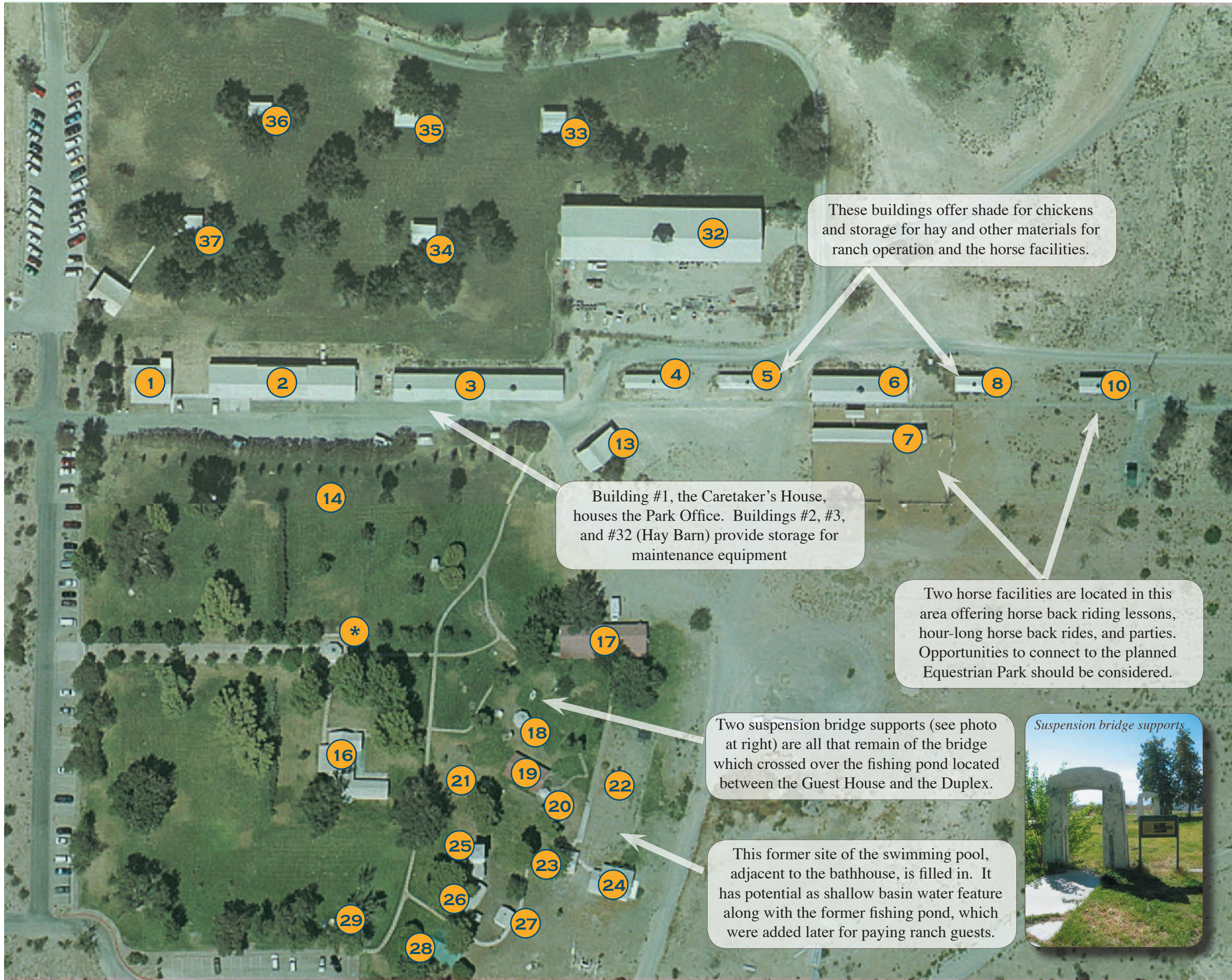
The Hay Barn is another prominent structure in the Park. It is centrally located between the Historic Area and the lakes. It holds opportunities for a Visitor’s Center or large gathering space however, like the Water Tower, it needs structural and architectural study to insure it will meet current codes for public safety.



* NON-HISTORIC GAZEBO

This non-historic gazebo is surrounded by a painted concrete wall. It was intended as a gathering space to start tours of the Park. Beneath the gazebo are interpretive signs discussing the former use of the Park as a working ranch and divorce ranch.





FLOYD LAMB PARK
EXISTING CONDITIONS
**PARK CORE
HISTORIC AREA**
SCALE 1:1,200

This map shows existing structures in the Historic Area of the Park Core as labeled by the State of Nevada Historic Preservation Office.

- 1 CARETAKER'S HOUSE
- 2 MACHINE BUILDING - FIREHOUSE
- 3 OFFICE AND STABLES
- 4-6 STABLES
- 7-10 SHEDS
- 13 ADOBE HUT
- 14 TENNIS COURT
- 16 FOREMAN'S HOUSE
- 17 GUEST HOUSE
- 18 PUMP HOUSE
- 19 DUPLEX
- 20 GAZEBO
- 21 ROOT CELLAR
- 22 SWIMMING POOL
- 23 BATH HOUSE
- 24 GENERATOR BUILDING
- 25 WATER TOWER
- 26 SPRING HOUSE AND WELL
- 27 POWER HOUSE
- 28 SKEET BUILDING
- 29-30 RESTROOMS
- 32 HAY BARN
- 33-37 PICNIC SHELTERS
- * NON-HISTORIC GAZEBO (not included in state Historic Registry)

These buildings offer shade for chickens and storage for hay and other materials for ranch operation and the horse facilities.

Building #1, the Caretaker's House, houses the Park Office. Buildings #2, #3, and #32 (Hay Barn) provide storage for maintenance equipment

Two horse facilities are located in this area offering horse back riding lessons, hour-long horse back rides, and parties. Opportunities to connect to the planned Equestrian Park should be considered.

Two suspension bridge supports (see photo at right) are all that remain of the bridge which crossed over the fishing pond located between the Guest House and the Duplex.

This former site of the swimming pool, adjacent to the bathhouse, is filled in. It has potential as shallow basin water feature along with the former fishing pond, which were added later for paying ranch guests.



Suspension bridge supports

Note: Structures 9 (shed), 11 (mobile home), 15 (concessions building), and 31 (mobile home) are no longer on the site.

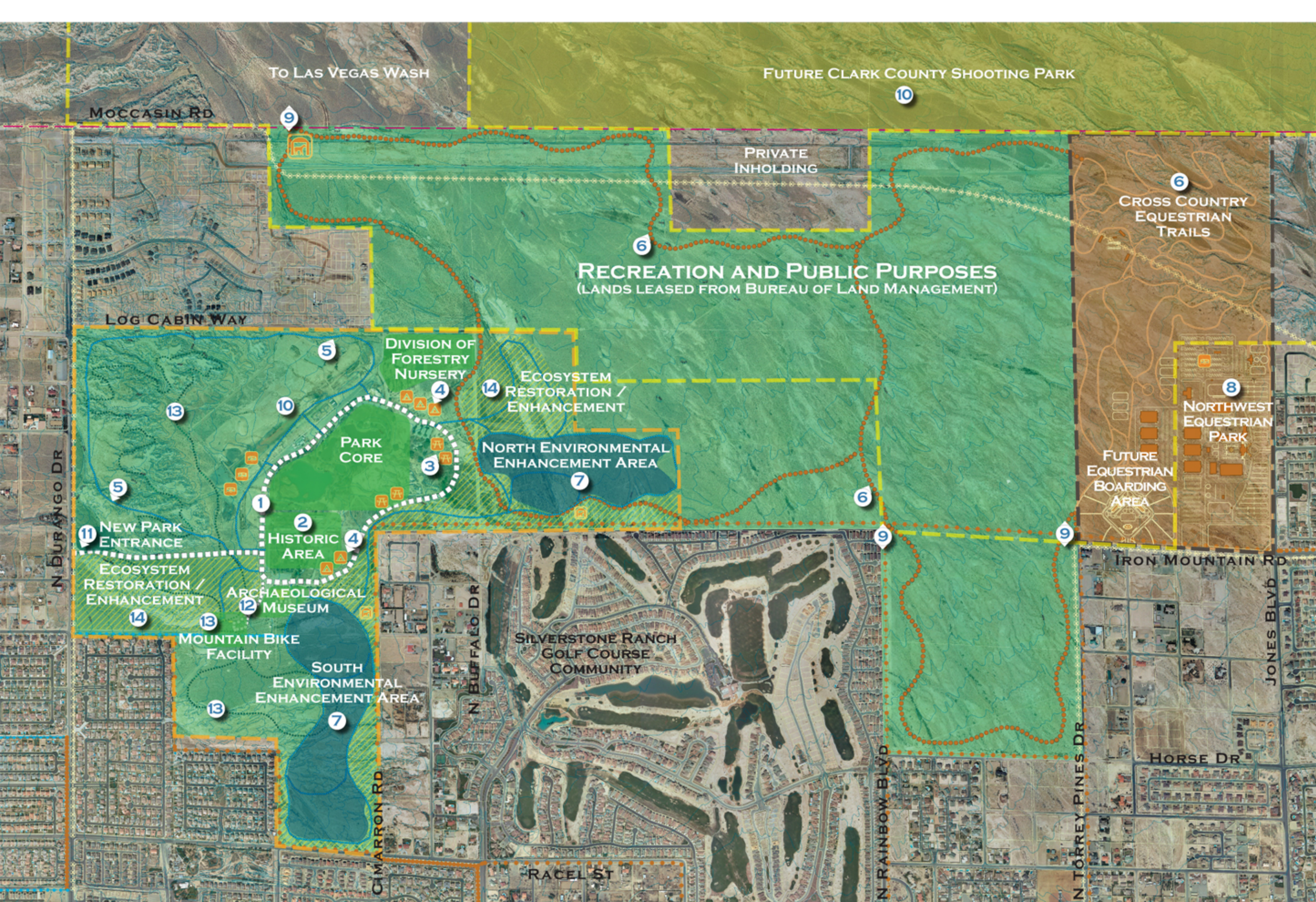


FLOYD LAMB PARK

SCALE: 1"=1,200'-0"

- LAND OWNED BY STATE OF NEVADA
- CONSERVATION TRANSFER AGREEMENT AREA (CTA)
- MOCCASIN ROAD EXTENSION (PLANNED PARKWAY)
- EQUESTRIAN PARK BOUNDARY
- PROPOSED USES
- PROPOSED ROADS
- PROPOSED MULTI-USE TRAILS
- PROPOSED EQUESTRIAN TRAILS
- EXISTING CITY EQUESTRIAN TRAILS
- POTENTIAL CITY EQUESTRIAN TRAILS (INCLUDES APPROVED AND PROPOSED TRAILS)
- EXISTING CITY MULTI-USE TRAILS
- POTENTIAL CITY MULTI-USE TRAILS (INCLUDES APPROVED AND PROPOSED TRAILS)
- POTENTIAL CITY MULTI-USE NON EQUESTRIAN TRAILS
- GROUP CAMPING (RV AND NON-RV)
- GROUP PICNIC AREA
- EQUESTRIAN COMFORT STATION

ALTERNATIVE A: 'As Is'



PASSIVE RECREATION

CULTURAL PRESERVATION

B

LAND CONSERVATION

FLOYD LAMB PARK

SCALE: 1"=1,200'-0"

--- LAND OWNED BY STATE OF NEVADA

--- CONSERVATION TRANSFER AGREEMENT AREA (CTA)

--- MOCCASIN ROAD EXTENSION (PLANNED PARKWAY)

--- EQUESTRIAN PARK BOUNDARY

--- PROPOSED USES

--- PROPOSED ROADS

--- PROPOSED MULTI-USE TRAILS

--- PROPOSED EQUESTRIAN TRAILS

--- EXISTING CITY EQUESTRIAN TRAILS

--- POTENTIAL CITY EQUESTRIAN TRAILS (INCLUDES APPROVED AND PROPOSED TRAILS)

--- EXISTING CITY MULTI-USE TRAILS

--- POTENTIAL CITY MULTI-USE TRAILS (INCLUDES APPROVED AND PROPOSED TRAILS)

--- POTENTIAL CITY MULTI-USE NON EQUESTRIAN TRAILS

--- GROUP CAMPING (RV AND NON-RV)

--- GROUP PICNIC AREA

--- EQUESTRIAN COMFORT STATION

--- PROPOSED MOUNTAIN BIKE TRAIL

--- ECOSYSTEM RESTORATION/ENHANCEMENT

PREPARED FOR THE CITY OF LAS VEGAS, NEVADA

PREPARED BY GREENWAYS INC. + J.W. ZUNINO & ASSOC.

M-5

ALTERNATIVE B: 'ENHANCED PARK'



Passive Recreation

C

Cultural Preservation

Land Conservation

FLOYD LAMB PARK

SCALE: 1"=1,200'-0"

- Land Owned by State of Nevada
- Conservation Transfer Agreement Area (CTA)
- Moccasin Road Extension (Planned Parkway)
- Equestrian Park Boundary
- Proposed Uses
- Proposed Roads
- Proposed Multi-Use Trails
- Proposed Equestrian Trails
- Existing City Equestrian Trails
- Potential City Equestrian Trails (Includes Approved and Proposed Trails)
- Existing City Multi-Use Trails
- Potential City Multi-Use Trails (Includes Approved and Proposed Trails)
- Potential City Multi-Use Trails (Non Equestrian Trails)
- Group Camping (RV and Non-RV)
- Group Picnic Area
- Equestrian Comfort Station
- Proposed Mountain Bike Trail
- Ecosystem Restoration/Enhancement

PREPARED FOR THE CITY OF LAS VEGAS, NEVADA

PREPARED BY GREENWAYS INC. + J.W. ZUNINO & ASSOC.

M-6

ALTERNATIVE C: 'FULLY DEVELOPED PARK'



PASSIVE RECREATION • CULTURAL PRESERVATION
FLOYD LAMB PARK
LAND CONSERVATION

SCALE: 1"=600'-0"

LAND OWNED BY STATE OF NEVADA

CONSERVATION TRANSFER AGREEMENT AREA (CTA)

MOCCASIN ROAD EXTENSION (PLANNED PARKWAY)

EQUESTRIAN PARK BOUNDARY

EXISTING SIDEWALK

EXISTING MULTI-USE TRAILS

PROPOSED SIDEWALKS

PROPOSED MULTI-USE TRAILS

PROPOSED EQUESTRIAN TRAILS

EXISTING CITY EQUESTRIAN TRAILS

POTENTIAL CITY EQUESTRIAN TRAILS (INCLUDES APPROVED AND PROPOSED TRAILS)

EXISTING CITY MULTI-USE TRAILS

POTENTIAL CITY MULTI-USE TRAILS (INCLUDES APPROVED AND PROPOSED TRAILS)

POTENTIAL CITY MULTI-USE NON EQUESTRIAN TRAILS

EQUESTRIAN COMFORT STATION

NON-RV GROUP CAMPING

EXISTING GROUP PICNIC AREA

PROPOSED GROUP PICNIC AREA

PROPOSED ACCESS POINTS (FOR NEIGHBORHOOD PEDESTRIAN AND EQUESTRIAN ACCESS)

ENVIRONMENTAL ENHANCEMENT AREAS CONCEPTUAL RIM (TOP OF BASIN)

PREFERRED ALTERNATIVE