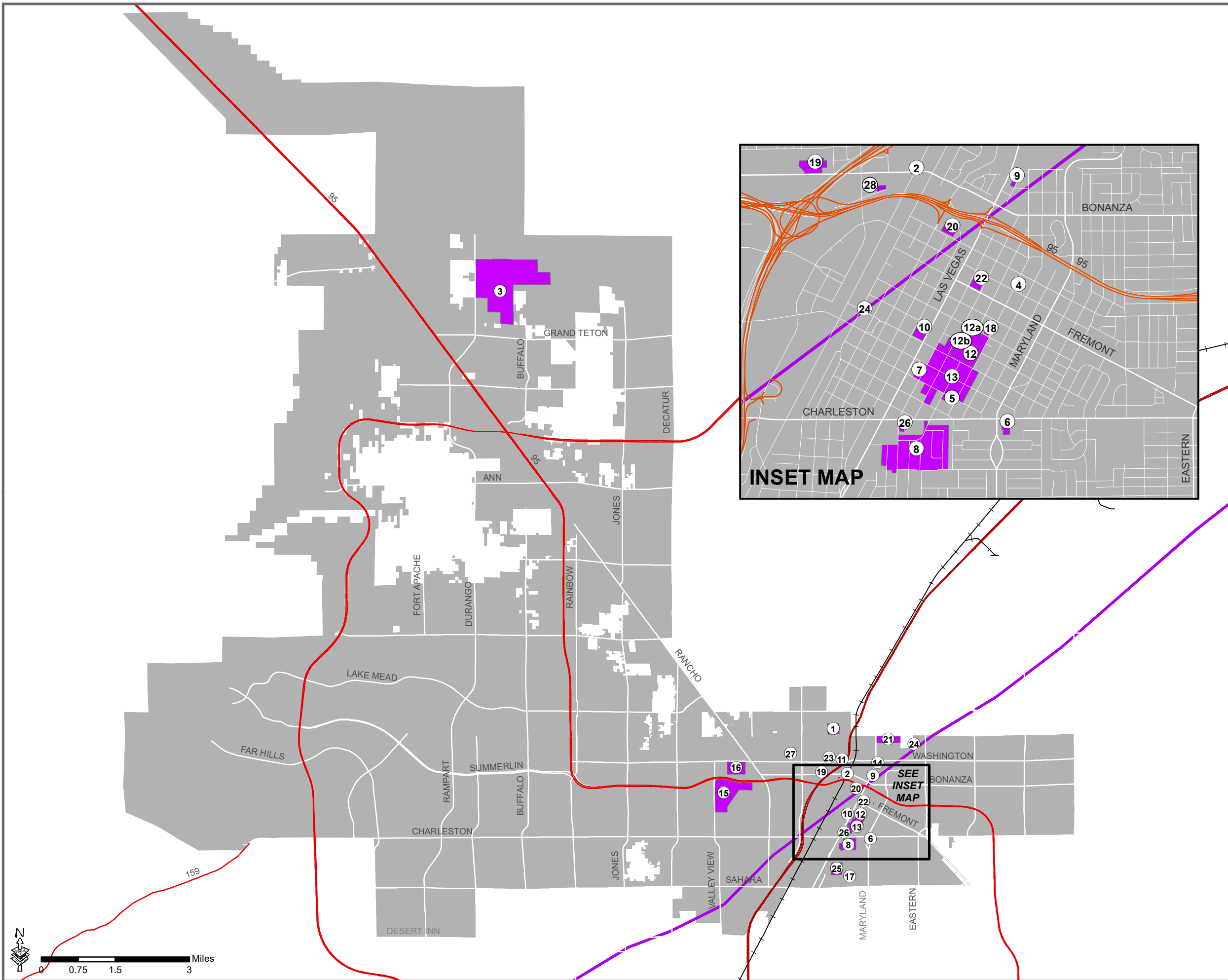


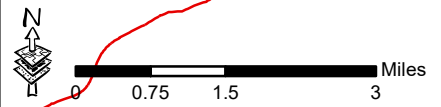
# City of Las Vegas

## City Wide Historic Preservation map



- 1, Berkley Square Neighborhood Historic District
- 2, Bonanza Underpass
- 3, Floyd Lamb Park at Tule Springs Ranch
- 4, Frank Wait House
- 5, The Henderson House
- 6, Huntridge Theater
- 7, Jay Dayton Smith House
- 8, John S. Park Historic District
- 9, La Concha Motel Lobby
- 10, Fifth Street School
- 11, Westside School
- 12, Las Vegas High School Historic District
- 12a, Las Vegas High School Academic Building and Gymnasium
- 12b, Las Vegas High School Frazier Hall
- 13, Las Vegas High School Neighborhood District
- 14, Las Vegas Mormon Fort
- 15, Big Springs/Las Vegas Springs
- 16, Lorenzi Park Historic District
- 17, Mesquite Club
- 18, Morelli House
- 19, Moulin Rouge Hotel and Casino\*
- 20, U.S. Post Office and Courthouse
- 21, Woodlawn Cemetery
- 22, El Cortez Hotel and Casino
- 23, Harrison Boarding House
- 24, Old Spanish Trail
- 25, Beverly Green Historic District
- 26, Wengert House
- 27, Helen Toland Residence
- 28, Mesquitewood
- 29, Eureka Locomotive (address restricted)
- 30, Tule Springs Archaeological Site (address restricted)
- 31, Green Shack\*
- 32, Railroad Cottage Historic District\*\*

Properties marked with a \* no longer exist, having either burned down or been demolished.  
 Properties marked with a \*\* are no longer historically listed as they have moved from their original location.



GIS maps are normally produced only to meet the needs of the City. Due to continuous development activity this map is for reference only.  
 Geographic Information System  
 Planning & Development Dept.  
 702-229-6301