



For Lease

1100 D St, Suites 100 and 120
Las Vegas, NV 89106

ShareDowntown Westside

Commercial Retail Opportunities

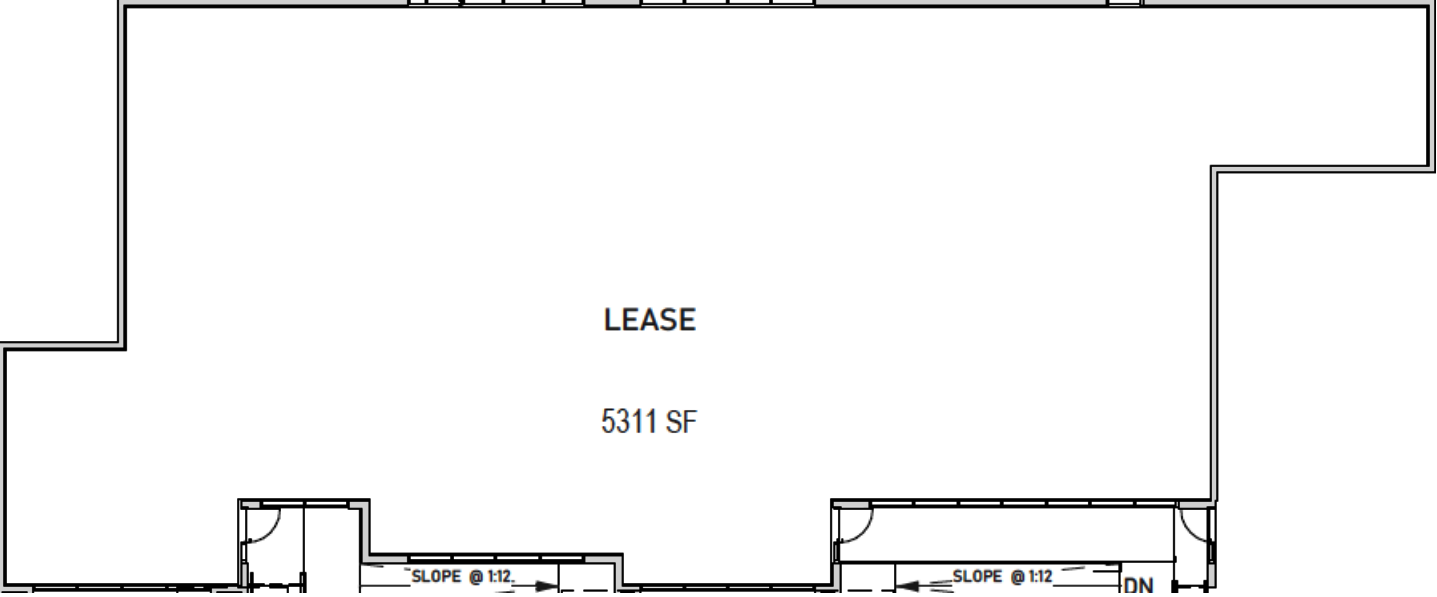
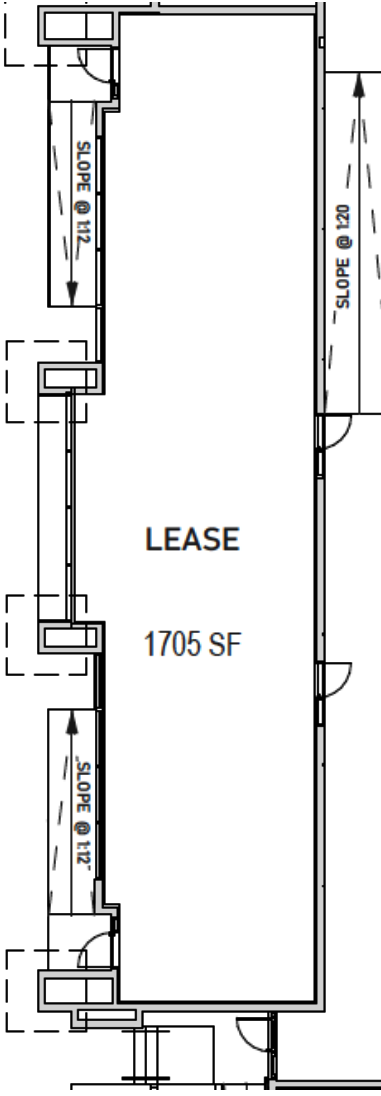




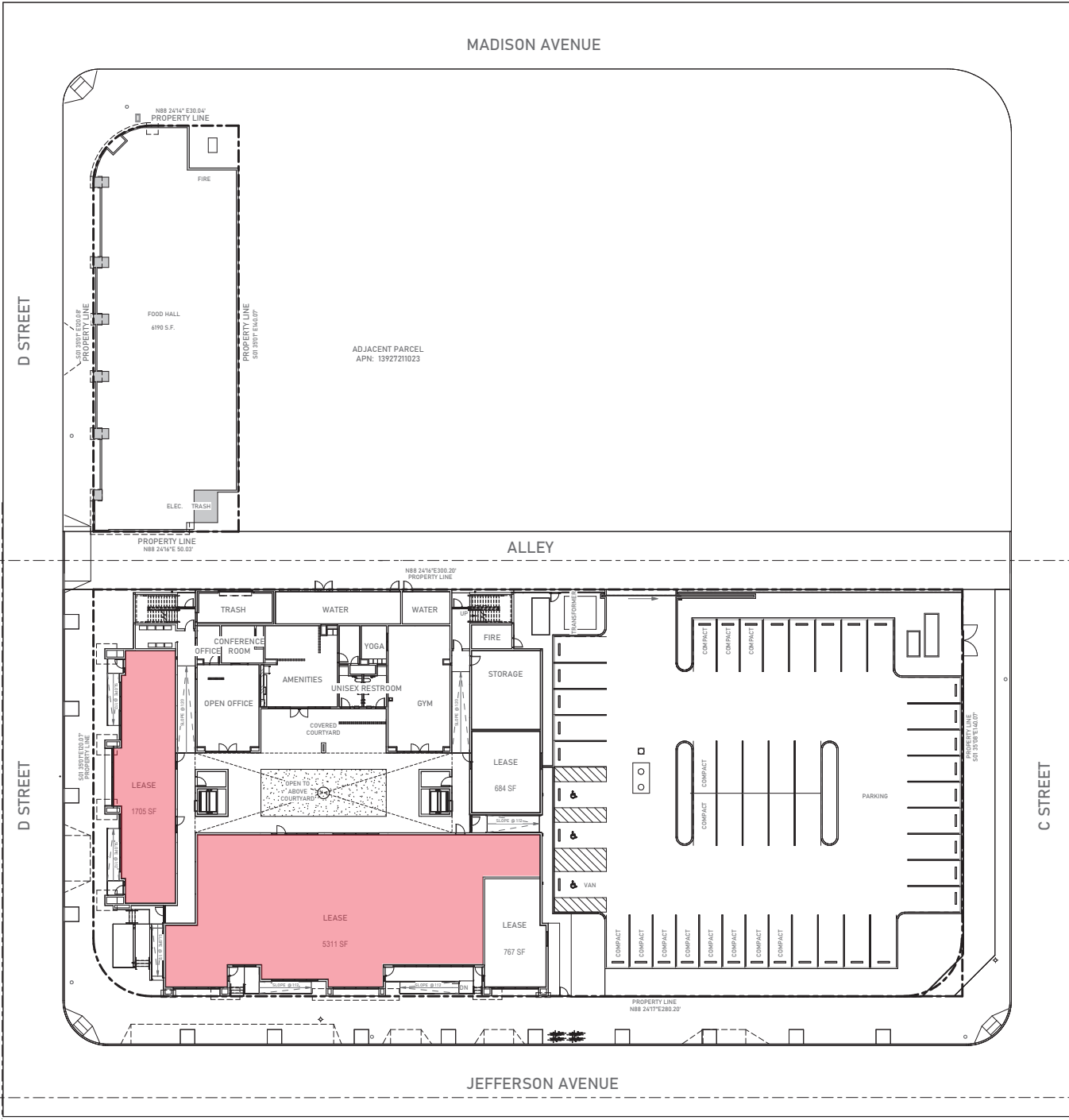
Property Highlights

- ShareWestside delivery is approximately Q4 2026
- Ground Floor Commercial (Retail + Office) Suites available under Multi-family Residential
- Total square footage is 7,016
- Lease Rate is negotiable
- Available Parking
- Delivery of the Suites - Vanilla shell condition
- Grease traps installed
- Tenant Improvement Allowance negotiable
- Multi-family Residential - 104 units (1 bed - 1 bath)

Floor Plates



Site Plan



Overview

ShareDOWNTOWN Westside will be a five-story building with 104 residential units. The ground floor retail of the apartment buildings feature approximately 7,000 square feet of leasable space, which will be leased by the city of Las Vegas RDA for local businesses.

Perfect For

Food & beverage services, office space, groceries, and creative/experiential retail.





Johnathan C. King, MS, CCIM

Real Estate Specialist

Economic and Urban Development Department

702-229-6352

jcking@lasvegasnevada.gov

Anthony Houston

Economic Development Specialist

Economic and Urban Development Department

702-229-6852

ahouston@lasvegasnevada.gov