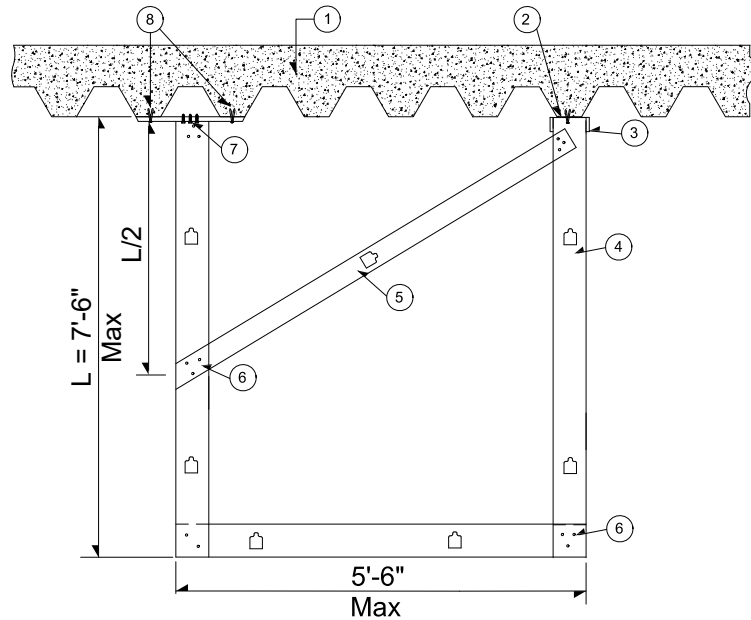


STEEL STUD SOFFIT FRAMING DETAILS FOR ATTACHMENT TO CONCRETE DECKS (2018 IBC)



LEGEND:

- ① EXISTING CONCRETE WITH A MINIMUM COMPRESSIVE STRENGTH f'_c 3,000 PSI OVER PROFILE STEEL DECK
- ② CONTINUOUS 362T125-30 WITH $3/8"$ Φ HILTI KWIK BOLT TZ (KB-TZ) WITH 2" EFFECTIVE EMBEDMENT (MIN.) AT 24.0" O.C. MAX (ICC ESR-1917) SPECIAL INSPECTION IS REQUIRED.
- ③ #10 SCREWS EACH SIDE (TYP.)
- ④ 362S125-30 AT 24.0" O.C. MAX
- ⑤ 362S125-33 AT 48" O.C. MAX
- ⑥ 3 - #10 SCREWS (TYP.)
- ⑦ 3 - #10 SCREWS 362T125-30 TRACK TO EACH PLATE
- ⑧ 12 GA PLATE (OR 18 GA CLIP ANGLE THAT MAY BE USED IN ALTERNATE STEEL DECK DIRECTION) AT 24" O.C. (MAX) W/ $2-3/8"$ Φ HILTI KWIK BOLT TZ (KB-TZ) WITH 2" EFFECTIVE EMBEDMENT (ICC ESR 1917) SPECIAL INSPECTION IS REQUIRED.

NOTES:

1. 5 PSF LATERAL LOAD
2. F_y (MIN.) = 33 ksi
3. MATERIAL, LOADS AND INSTALLATION SHALL COMPLY WITH THE 2018 IBC.
4. THESE DETAILS ARE GUIDELINES ONLY. THE REGISTERED DESIGN PROFESSIONAL (PROFESSIONAL ENGINEER) MAY PROVIDE ALTERNATE DESIGN AND CALCULATIONS THAT COMPLY WITH 2018 IBC.

SPECIAL INSPECTION/QAA IS REQUIRED

POST-INSTALLED ANCHORS' QA/SPECIAL INSPECTION (EXPANSION ANCHORS AND/OR CONCRETE SCREWS AND/OR EPOXY ANCHORS) IN HARDENED CONCRETE PER THE EVALUATION REPORT (I.C.C. AND/OR I.A.P.M.O. AND/OR CITY OF LOS ANGELES AND MANUFACTURER'S SPECIFICATIONS) **WILL BE REQUIRED TO BE COMPLETED BY AN APPROVED THIRD PARTY QA/SPECIAL INSPECTION AGENCY**. IF THE ONLY SPECIAL INSPECTION REQUIRED ON THE PROJECT IS POST-INSTALLED ANCHORS THEN THE FORM WILL ACT AS THE QA/SPECIAL INSPECTION AGREEMENT. THE FORMS ARE LOCATED AT THE FOLLOWING WEBSITE ADDRESS AND INCLUDED IN THIS ANNOUNCEMENT. THE FORMS ARE LOCATED AT THE FOLLOWING WEBSITE ADDRESS:

[HTTPS://WWW.LASVEGASNEVADA.GOV/GOVERNMENT/DEPARTMENTS/BUILDING-SAFETY/BUILDING-SAFETY-RESOURCES](https://www.lasvegasnevada.gov/government/departments/building-safety/building-safety-resources)

UNDER FORMS. IT SHOULD BE NOTED THAT THE BUILDING DEPARTMENT HAS AGREED TO INSPECT POST INSTALLED ANCHOR INSPECTIONS FOR PROJECTS IF THEY DO NOT HAVE ANY ADDITIONAL SPECIAL INSPECTION REQUIREMENTS. IN THE CASE OF THESE TYPES OF SPECIAL INSPECTIONS (THAT CITY OF LAS VEGAS' STAFF PERFORMS), THEY ARE SCHEDULED AS A #160 CITY OF LAS VEGAS' EXPRESS INSPECTIONS AND THEY ARE CHARGED IN ACCORDANCE WITH THE CURRENTLY ADOPTED FEE SCHEDULE PER DISPATCH SCHEDULED INSPECTION WITH ONE (1) HOURS MINIMUM FOR 160 INSPECTIONS. **CALL THE CITY OF LAS VEGAS' EXPRESS INSPECTIONS AT 702-229-6914 TO SCHEDULE.**