

2012 IRC Wall Details

Drafted by: 2012 IRC Committee

Accepted by: SNBO

November 12, 2014

THESE DRAWINGS ARE INTENDED TO ILLUSTRATE CODE INTERPRETATIONS RELEVANT TO SECTION R302.1 OF THE 2012 IRC AS AMENDED BY SNBO AND ADOPTED BY THE JURISDICTIONS COVERED IN SOUTHERN NEVADA. THESE DRAWINGS DO NOT COMMUNICATE CONSTRUCTION METHODS OR PRACTICES, NOR SHOULD ANY INFERENCE OF ANY CODE INTERPRETATION BEYOND THOSE ITEMS SPECIFIC TO R302.1. THE USE OF THESE DRAWINGS IS SUBJECT TO THE APPROVAL OF THE LOCAL BUILDING OFFICIAL.

11/12/14

Table of Contents

Walls

- **W1: 1-Coat Plaster**
- **W2: 3-Coat Plaster**
- **W3: Stone/Masonry Veneer**
- **W4: Fiber Cement**
- **W5: 3-Coat Plaster Wainscot**
- **W6: 1-Coat Plaster/Veneer Transition**
- **W7: 3-Coat Plaster/Veneer Transition**
- **W8: 1-Coat Plaster/Siding Transition (Section)**
- **W9: 3-Coat Plaster/Siding Transition (Section)**
- **W10: Perpendicular Truss Bottom Chord Bearing**
- **W11: Perpendicular Truss Top Chord Bearing**

Projections

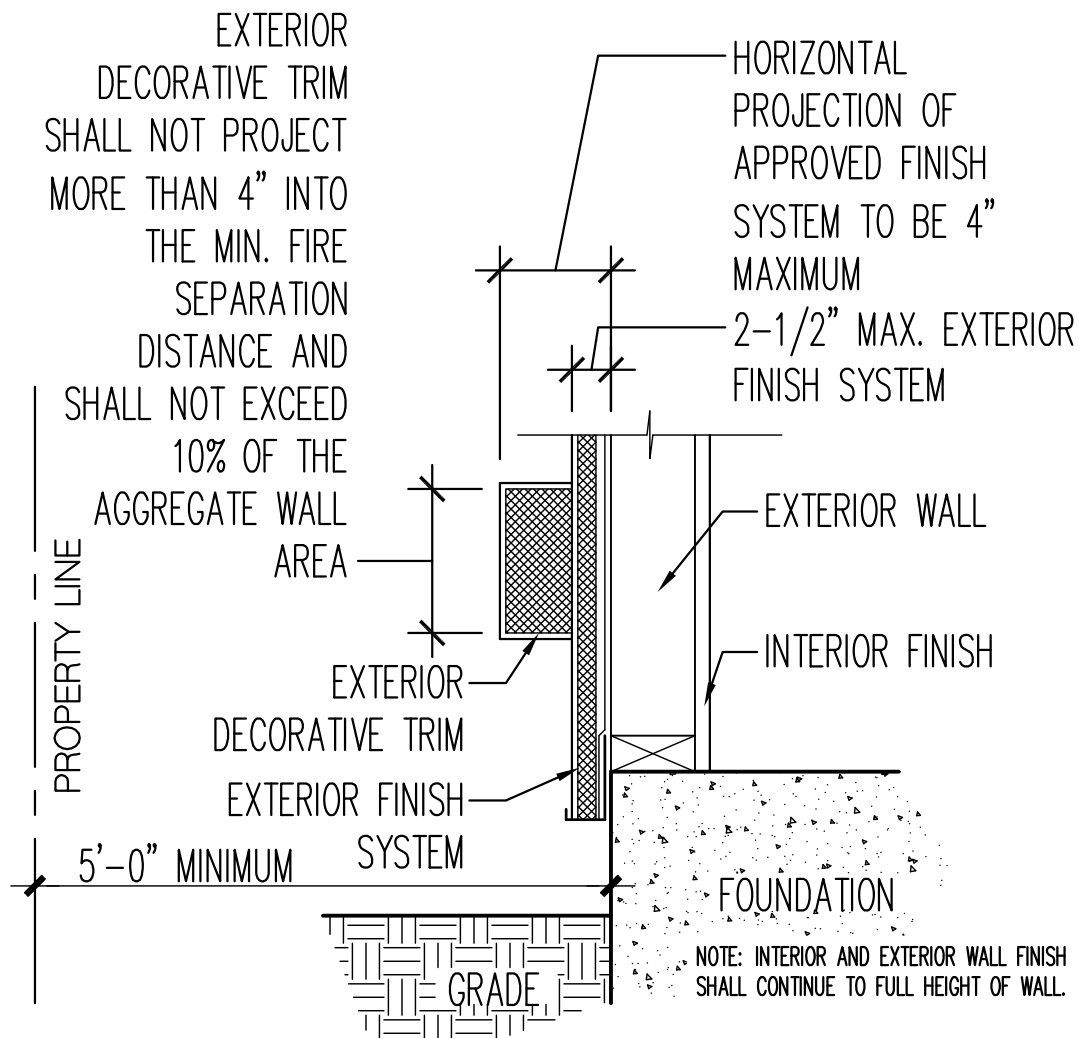
- **P1: Unprotected Eave/Rake**
- **P2: Wall to Roof Tight Eave/Rake**
- **P3: Protected Eave/Rake**
- **P3a: Protected Eave/Rake**
- **P4: Floor/Deck as Projection**
- **P5: Media Cantilever**
- **P6: Window Plant-On**

Openings and Penetrations

- **O1: Membrane Penetrations**
- **O2: Through Penetrations**
- **O3: Plumbing Box as Opening**
- **O4: Exhaust Vent as Opening**
- **O5: Electrical Panel as Opening**

THESE DRAWINGS ARE INTENDED TO ILLUSTRATE CODE INTERPRETATIONS RELEVANT TO SECTION R302.1 OF THE 2012 IRC AS AMENDED BY SNBO AND ADOPTED BY THE JURISDICTIONS COVERED IN SOUTHERN NEVADA. THESE DRAWINGS DO NOT COMMUNICATE CONSTRUCTION METHODS OR PRACTICES, NOR SHOULD ANY INFERENCE OF ANY CODE INTERPRETATION BEYOND THOSE ITEMS SPECIFIC TO R302.1. THE USE OF THESE DRAWINGS IS SUBJECT TO THE APPROVAL OF THE LOCAL BUILDING OFFICIAL.

11/12/14



TO DETERMINE WHEN PROTECTION IS REQUIRED BY TABLE R302.1(1), THE FIRE SEPARATION DISTANCE SHALL BE DETERMINED FROM THE PROPERTY LINE TO THE FINISH FACE OF THE WALL EXCEPT WHERE THE FOUNDATION DISTANCE FROM PROPERTY LINE IS 5 FEET OR GREATER, THE FOUNDATION DISTANCE WILL BE USED FOR THAT WALL ONLY.

SOUTHERN NEVADA AMENDMENT TO SECTION R302.1

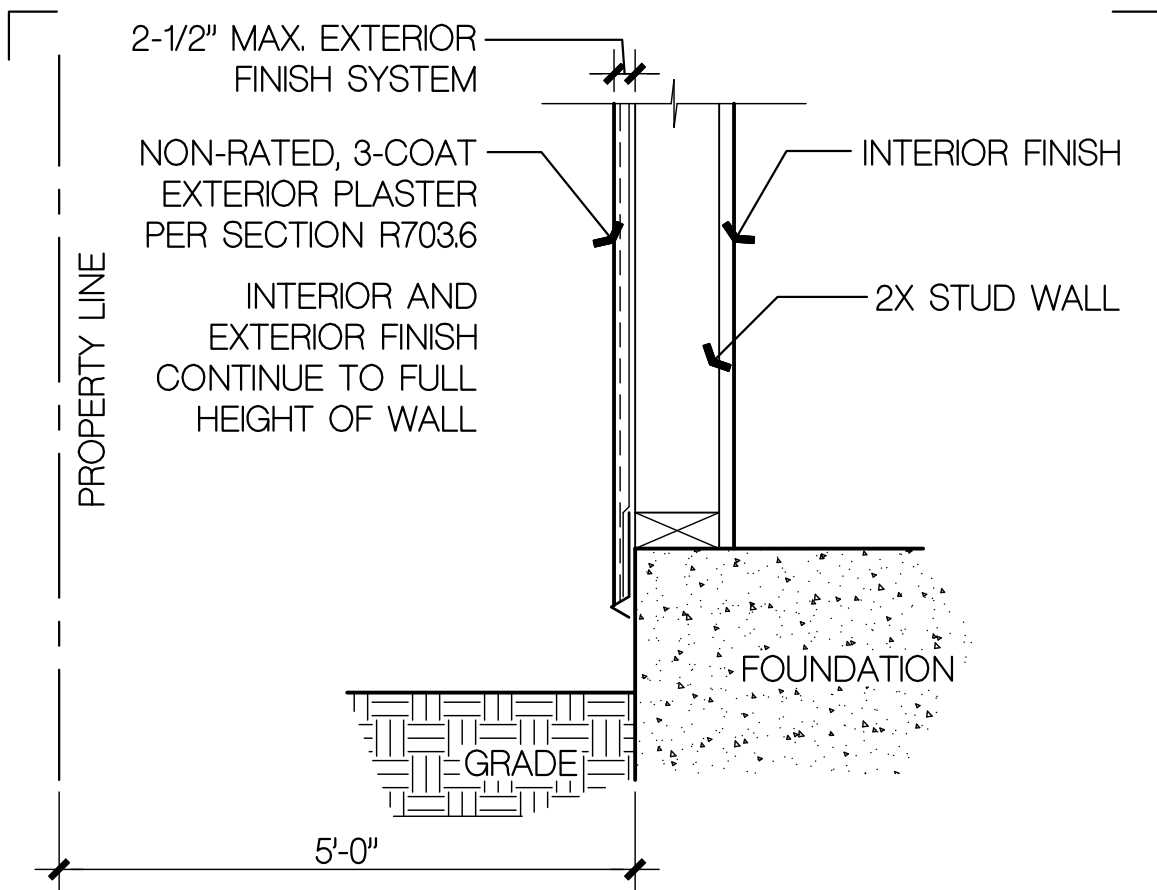
1-COAT PLASTER

N.T.S.

THESE DRAWINGS ARE INTENDED TO ILLUSTRATE CODE INTERPRETATIONS RELEVANT TO SECTION R302.1 OF THE 2012 IRC AS AMENDED BY SNBO AND ADOPTED BY THE JURISDICTIONS COVERED IN SOUTHERN NEVADA. THESE DRAWINGS DO NOT COMMUNICATE CONSTRUCTION METHODS OR PRACTICES, NOR SHOULD ANY INFERENCE OF ANY CODE INTERPRETATION BEYOND THOSE ITEMS SPECIFIC TO R302.1 OCCUR. THE USE OF THESE DRAWINGS IS SUBJECT TO THE APPROVAL OF THE LOCAL BUILDING OFFICIAL.

W1

11/12/14



TO DETERMINE WHEN PROTECTION IS REQUIRED BY TABLE R302.1(1), THE FIRE SEPARATION DISTANCE SHALL BE DETERMINED FROM THE PROPERTY LINE TO THE FINISH FACE OF THE WALL EXCEPT WHERE THE FOUNDATION DISTANCE FROM PROPERTY LINE IS 5 FEET OR GREATER, THE FOUNDATION DISTANCE WILL BE USED FOR THAT WALL ONLY.

SOUTHERN NEVADA AMENDMENT TO SECTION R302.1

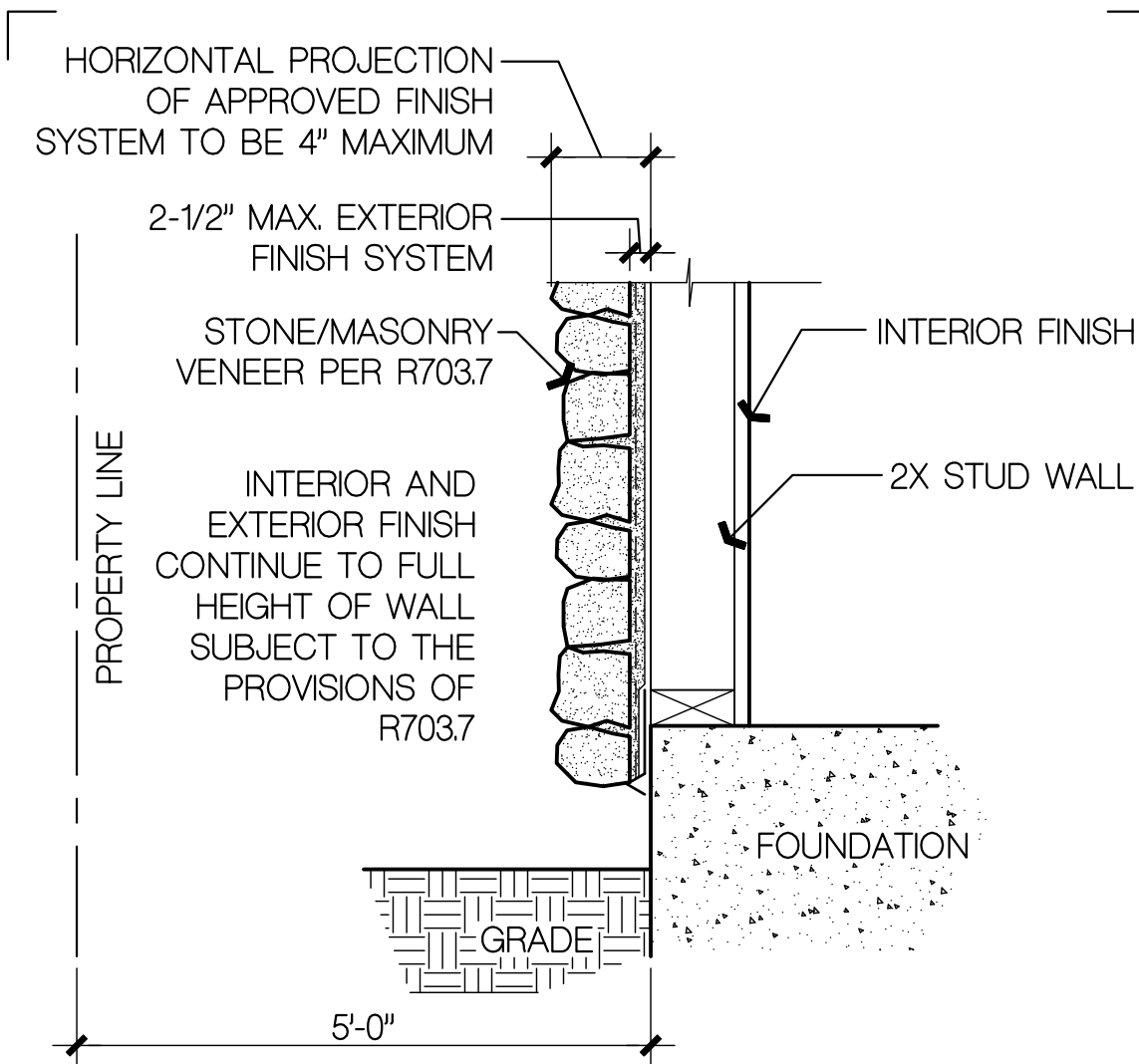
3-COAT PLASTER

N.T.S.

THESE DRAWINGS ARE INTENDED TO ILLUSTRATE CODE INTERPRETATIONS RELEVANT TO SECTION R302.1 OF THE 2012 IRC AS AMENDED BY SNBO AND ADOPTED BY THE JURISDICTIONS COVERED IN SOUTHERN NEVADA. THESE DRAWINGS DO NOT COMMUNICATE CONSTRUCTION METHODS OR PRACTICES, NOR SHOULD ANY INFERENCE OF ANY CODE INTERPRETATION BEYOND THOSE ITEMS SPECIFIC TO R302.1 OCCUR. THE USE OF THESE DRAWINGS IS SUBJECT TO THE APPROVAL OF THE LOCAL BUILDING OFFICIAL.

W2

11/12/14



TO DETERMINE WHEN PROTECTION IS REQUIRED BY TABLE R302.1(1), THE FIRE SEPARATION DISTANCE SHALL BE DETERMINED FROM THE PROPERTY LINE TO THE FINISH FACE OF THE WALL EXCEPT WHERE THE FOUNDATION DISTANCE FROM PROPERTY LINE IS 5 FEET OR GREATER, THE FOUNDATION DISTANCE WILL BE USED FOR THAT WALL ONLY.

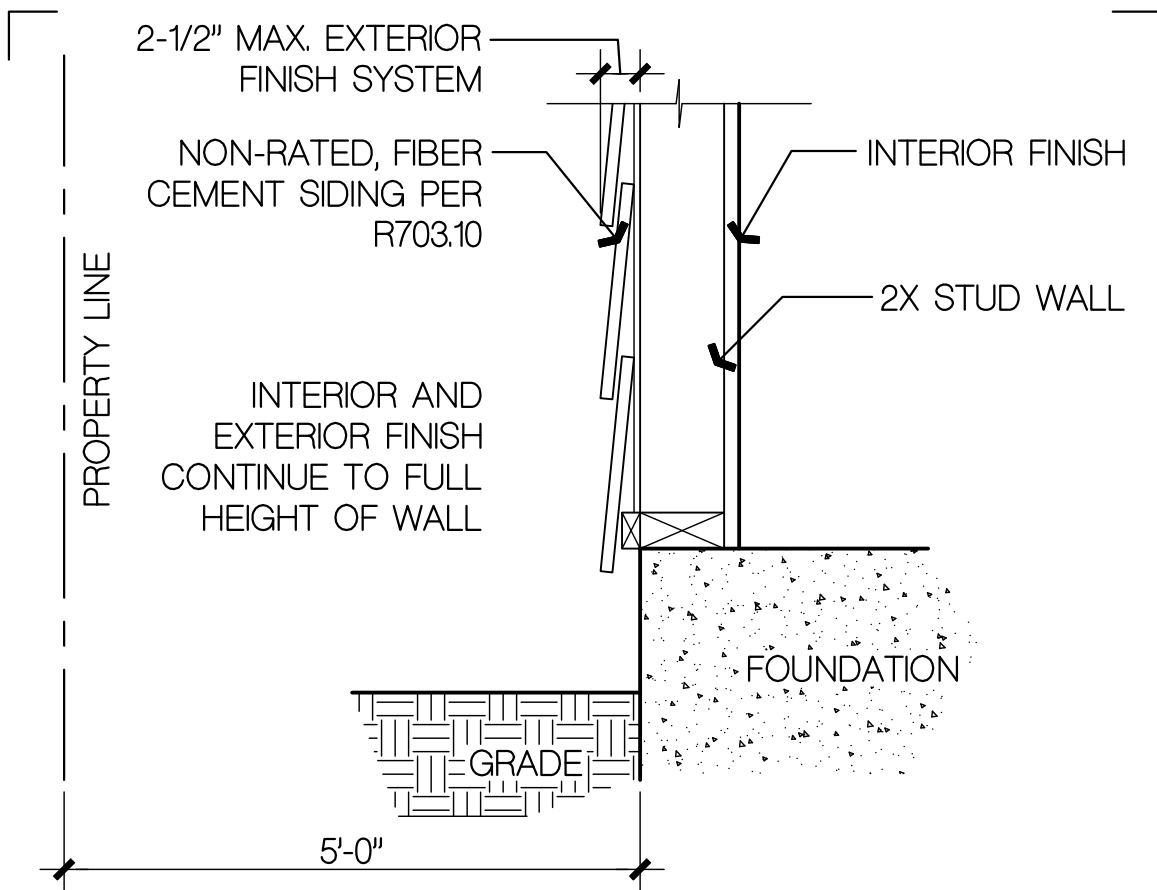
SOUTHERN NEVADA AMENDMENT TO SECTION R302.1

STONE/MASONRY VENEER **N.T.S.**

THESE DRAWINGS ARE INTENDED TO ILLUSTRATE CODE INTERPRETATIONS RELEVANT TO SECTION R302.1 OF THE 2012 IRC AS AMENDED BY SNBO AND ADOPTED BY THE JURISDICTIONS COVERED IN SOUTHERN NEVADA. THESE DRAWINGS DO NOT COMMUNICATE CONSTRUCTION METHODS OR PRACTICES, NOR SHOULD ANY INFERENCE OF ANY CODE INTERPRETATION BEYOND THOSE ITEMS SPECIFIC TO R302.1 OCCUR. THE USE OF THESE DRAWINGS IS SUBJECT TO THE APPROVAL OF THE LOCAL BUILDING OFFICIAL.

W3

11/12/14



TO DETERMINE WHEN PROTECTION IS REQUIRED BY TABLE R302.1(1), THE FIRE SEPARATION DISTANCE SHALL BE DETERMINED FROM THE PROPERTY LINE TO THE FINISH FACE OF THE WALL EXCEPT WHERE THE FOUNDATION DISTANCE FROM PROPERTY LINE IS 5 FEET OR GREATER, THE FOUNDATION DISTANCE WILL BE USED FOR THAT WALL ONLY.

SOUTHERN NEVADA AMENDMENT TO SECTION R302.1

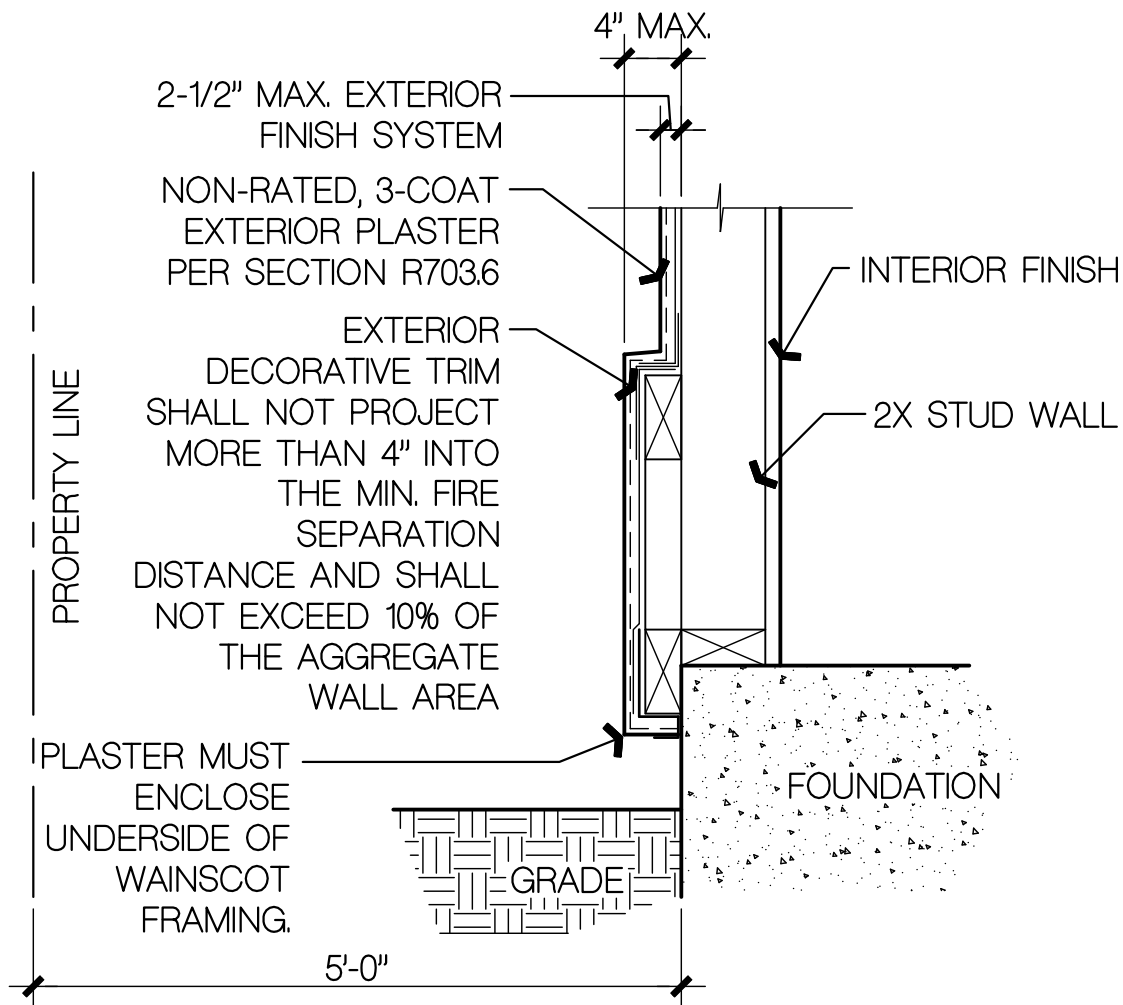
FIBER CEMENT SIDING

N.T.S.

THESE DRAWINGS ARE INTENDED TO ILLUSTRATE CODE INTERPRETATIONS RELEVANT TO SECTION R302.1 OF THE 2012 IRC AS AMENDED BY SNBO AND ADOPTED BY THE JURISDICTIONS COVERED IN SOUTHERN NEVADA. THESE DRAWINGS DO NOT COMMUNICATE CONSTRUCTION METHODS OR PRACTICES, NOR SHOULD ANY INFERENCE OF ANY CODE INTERPRETATION BEYOND THOSE ITEMS SPECIFIC TO R302.1 OCCUR. THE USE OF THESE DRAWINGS IS SUBJECT TO THE APPROVAL OF THE LOCAL BUILDING OFFICIAL.

W4

11/12/14



TO DETERMINE WHEN PROTECTION IS REQUIRED BY TABLE R302.1(1), THE FIRE SEPARATION DISTANCE SHALL BE DETERMINED FROM THE PROPERTY LINE TO THE FINISH FACE OF THE WALL EXCEPT WHERE THE FOUNDATION DISTANCE FROM PROPERTY LINE IS 5 FEET OR GREATER, THE FOUNDATION DISTANCE WILL BE USED FOR THAT WALL ONLY.

SOUTHERN NEVADA AMENDMENT TO SECTION R302.1

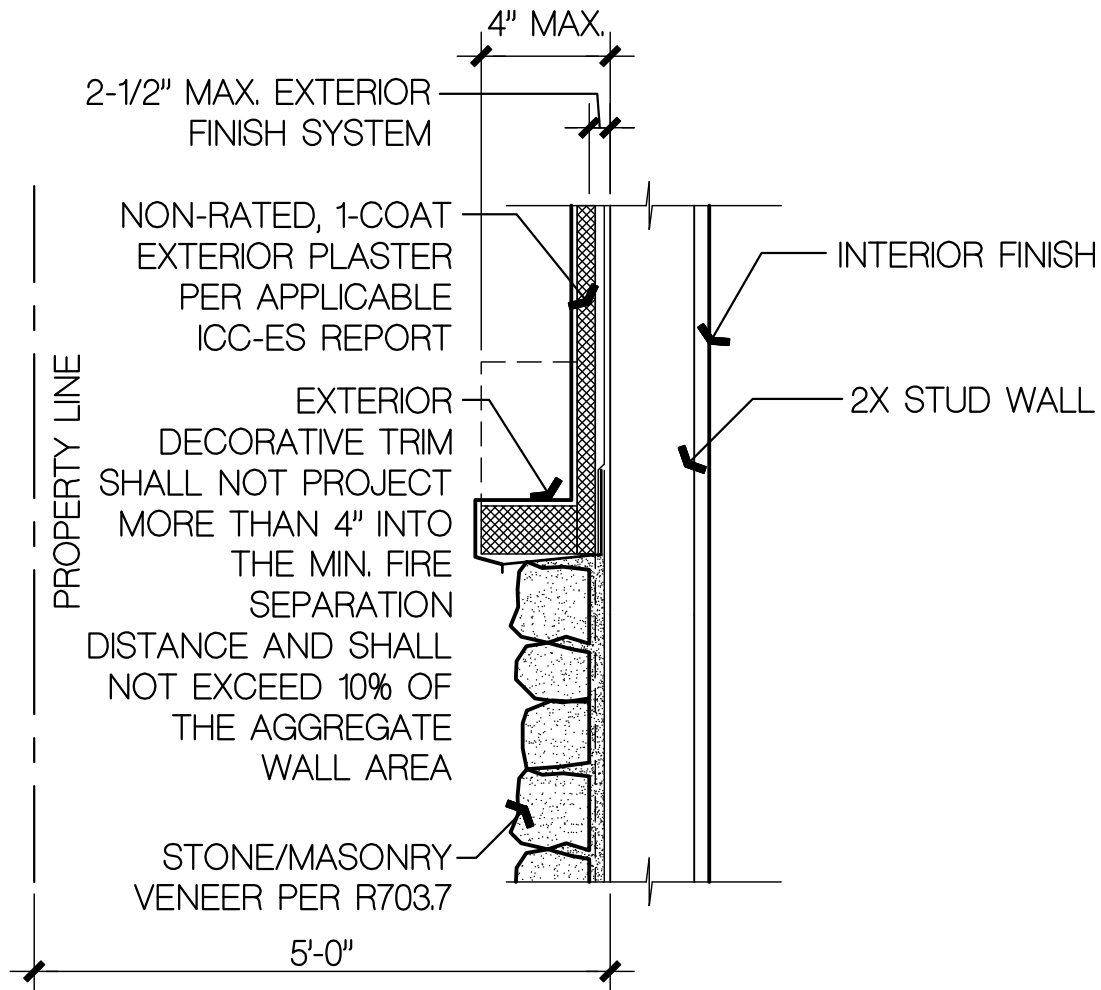
N.T.S.

3-COAT PLASTER/EXTERIOR DECORATIVE TRIM

THESE DRAWINGS ARE INTENDED TO ILLUSTRATE CODE INTERPRETATIONS RELEVANT TO SECTION R302.1 OF THE 2012 IRC AS AMENDED BY SNBO AND ADOPTED BY THE JURISDICTIONS COVERED IN SOUTHERN NEVADA. THESE DRAWINGS DO NOT COMMUNICATE CONSTRUCTION METHODS OR PRACTICES, NOR SHOULD ANY INFERENCE OF ANY CODE INTERPRETATION BEYOND THOSE ITEMS SPECIFIC TO R302.1 OCCUR. THE USE OF THESE DRAWINGS IS SUBJECT TO THE APPROVAL OF THE LOCAL BUILDING OFFICIAL.

W5

11/12/14



TO DETERMINE WHEN PROTECTION IS REQUIRED BY TABLE R302.1(1), THE FIRE SEPARATION DISTANCE SHALL BE DETERMINED FROM THE PROPERTY LINE TO THE FINISH FACE OF THE WALL EXCEPT WHERE THE FOUNDATION DISTANCE FROM PROPERTY LINE IS 5 FEET OR GREATER, THE FOUNDATION DISTANCE WILL BE USED FOR THAT WALL ONLY.

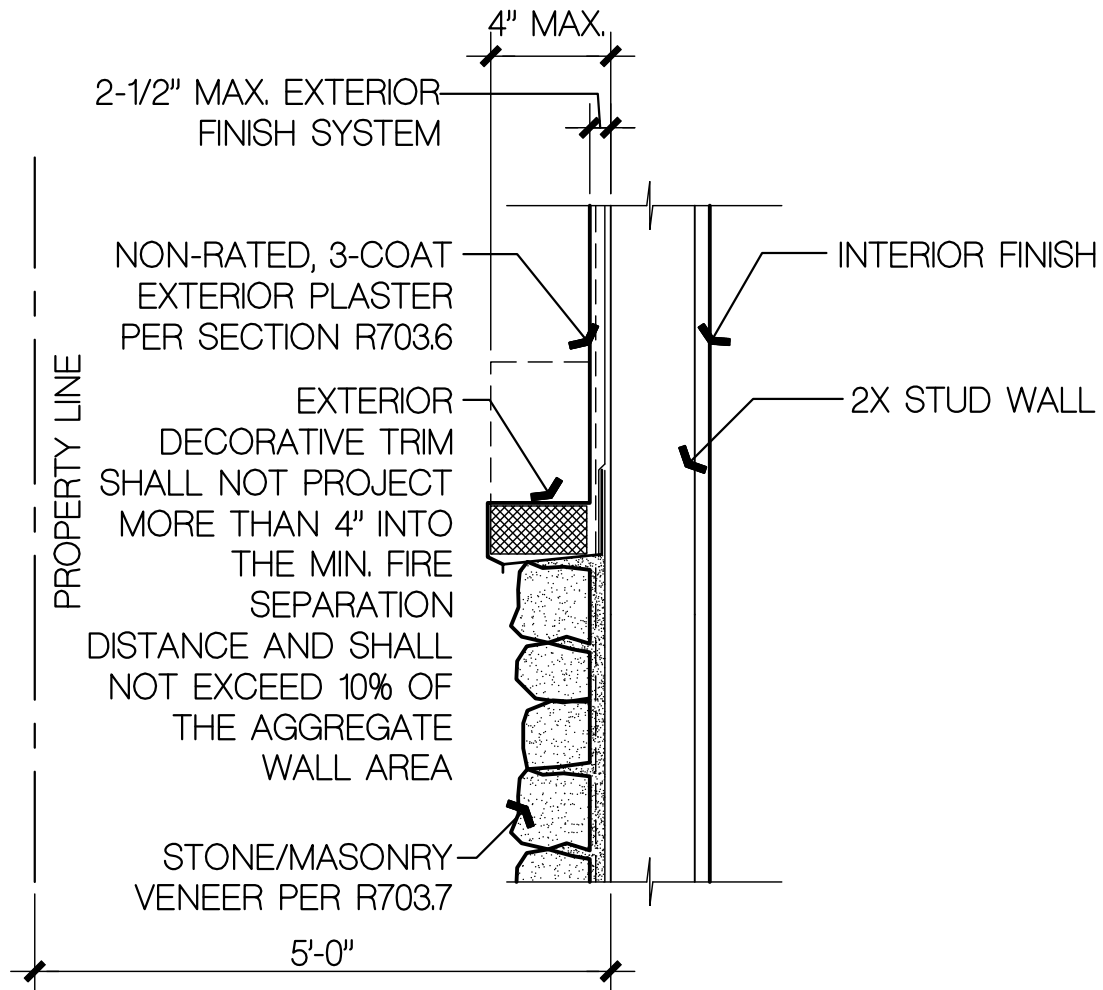
SOUTHERN NEVADA AMENDMENT TO SECTION R302.1

1-COAT PLASTER/VENEER **N.T.S.**

THESE DRAWINGS ARE INTENDED TO ILLUSTRATE CODE INTERPRETATIONS RELEVANT TO SECTION R302.1 OF THE 2012 IRC AS AMENDED BY SNBO AND ADOPTED BY THE JURISDICTIONS COVERED IN SOUTHERN NEVADA. THESE DRAWINGS DO NOT COMMUNICATE CONSTRUCTION METHODS OR PRACTICES, NOR SHOULD ANY INFERENCE OF ANY CODE INTERPRETATION BEYOND THOSE ITEMS SPECIFIC TO R302.1 OCCUR. THE USE OF THESE DRAWINGS IS SUBJECT TO THE APPROVAL OF THE LOCAL BUILDING OFFICIAL.

W6

11/12/14



TO DETERMINE WHEN PROTECTION IS REQUIRED BY TABLE R302.1(1), THE FIRE SEPARATION DISTANCE SHALL BE DETERMINED FROM THE PROPERTY LINE TO THE FINISH FACE OF THE WALL EXCEPT WHERE THE FOUNDATION DISTANCE FROM PROPERTY LINE IS 5 FEET OR GREATER, THE FOUNDATION DISTANCE WILL BE USED FOR THAT WALL ONLY.

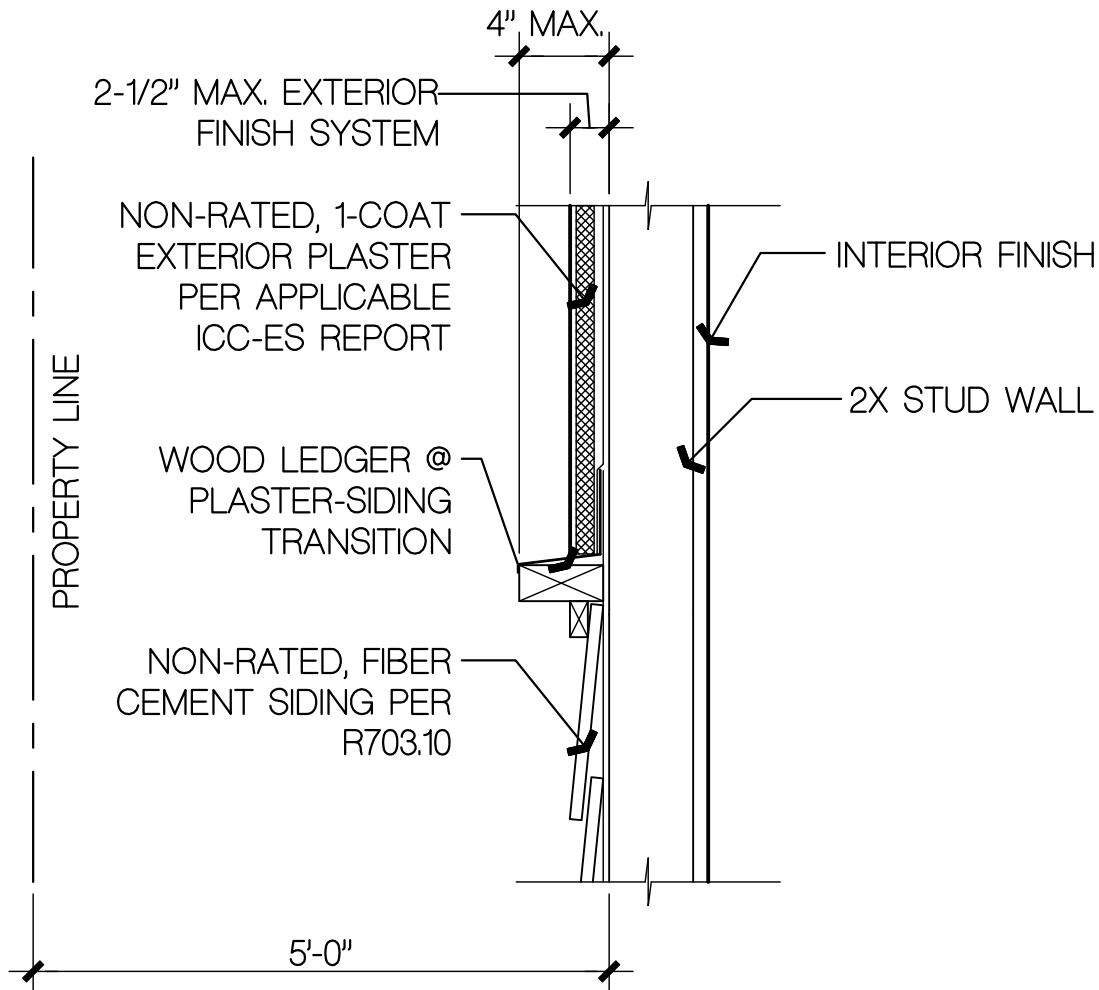
SOUTHERN NEVADA AMENDMENT TO SECTION R302.1

3-COAT PLASTER/VENEER N.T.S.

THESE DRAWINGS ARE INTENDED TO ILLUSTRATE CODE INTERPRETATIONS RELEVANT TO SECTION R302.1 OF THE 2012 IRC AS AMENDED BY SNBO AND ADOPTED BY THE JURISDICTIONS COVERED IN SOUTHERN NEVADA. THESE DRAWINGS DO NOT COMMUNICATE CONSTRUCTION METHODS OR PRACTICES, NOR SHOULD ANY INFERENCE OF ANY CODE INTERPRETATION BEYOND THOSE ITEMS SPECIFIC TO R302.1 OCCUR. THE USE OF THESE DRAWINGS IS SUBJECT TO THE APPROVAL OF THE LOCAL BUILDING OFFICIAL.

W7

11/12/14



TO DETERMINE WHEN PROTECTION IS REQUIRED BY TABLE R302.1(1), THE FIRE SEPARATION DISTANCE SHALL BE DETERMINED FROM THE PROPERTY LINE TO THE FINISH FACE OF THE WALL EXCEPT WHERE THE FOUNDATION DISTANCE FROM PROPERTY LINE IS 5 FEET OR GREATER, THE FOUNDATION DISTANCE WILL BE USED FOR THAT WALL ONLY.

SOUTHERN NEVADA AMENDMENT TO SECTION R302.1

WALL SECTION VIEW

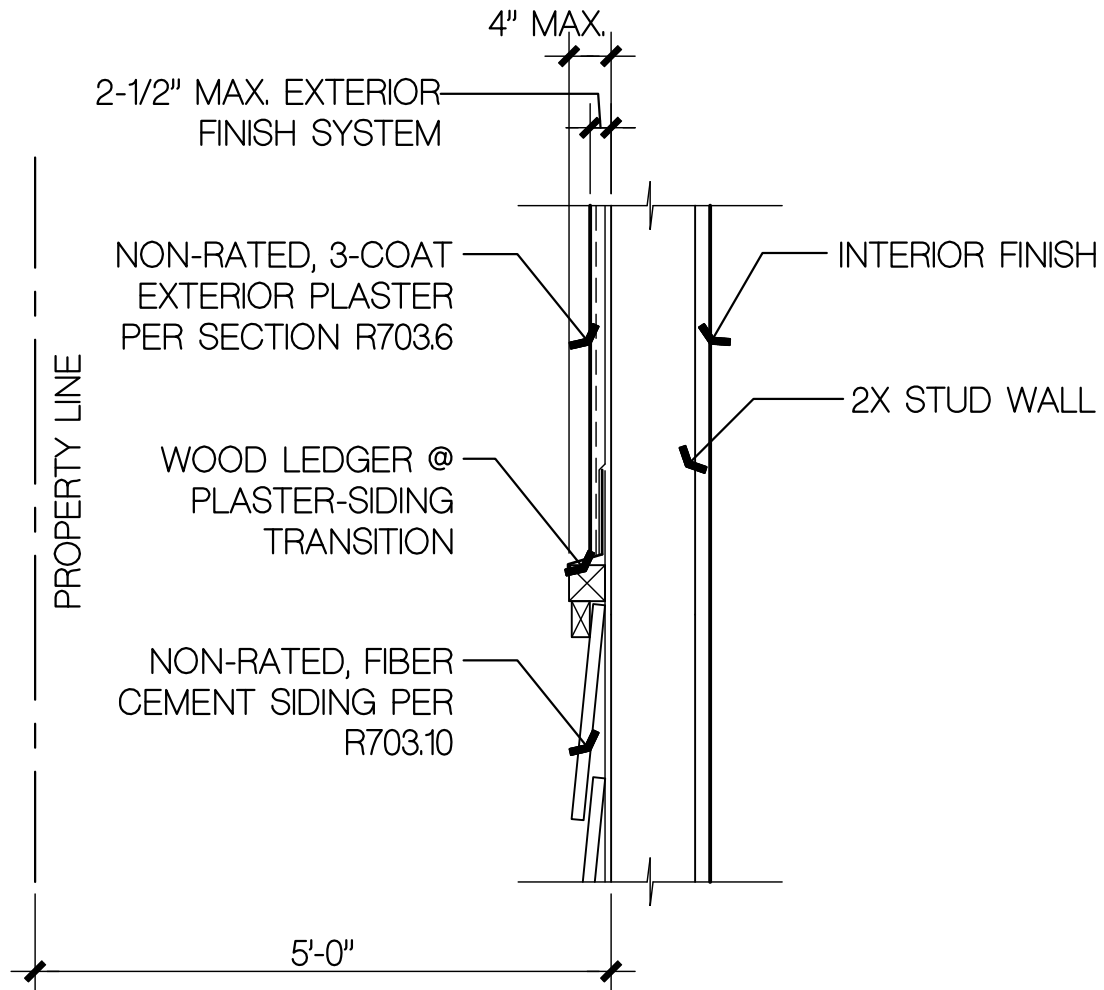
1-COAT PLASTER/SIDING

N.T.S.

THESE DRAWINGS ARE INTENDED TO ILLUSTRATE CODE INTERPRETATIONS RELEVANT TO SECTION R302.1 OF THE 2012 IRC AS AMENDED BY SNBO AND ADOPTED BY THE JURISDICTIONS COVERED IN SOUTHERN NEVADA. THESE DRAWINGS DO NOT COMMUNICATE CONSTRUCTION METHODS OR PRACTICES, NOR SHOULD ANY INFERENCE OF ANY CODE INTERPRETATION BEYOND THOSE ITEMS SPECIFIC TO R302.1 OCCUR. THE USE OF THESE DRAWINGS IS SUBJECT TO THE APPROVAL OF THE LOCAL BUILDING OFFICIAL.

W8

11/12/14



TO DETERMINE WHEN PROTECTION IS REQUIRED BY TABLE R302.1(1), THE FIRE SEPARATION DISTANCE SHALL BE DETERMINED FROM THE PROPERTY LINE TO THE FINISH FACE OF THE WALL EXCEPT WHERE THE FOUNDATION DISTANCE FROM PROPERTY LINE IS 5 FEET OR GREATER, THE FOUNDATION DISTANCE WILL BE USED FOR THAT WALL ONLY.

SOUTHERN NEVADA AMENDMENT TO SECTION R302.1

WALL SECTION VIEW

3-COAT PLASTER/SIDING

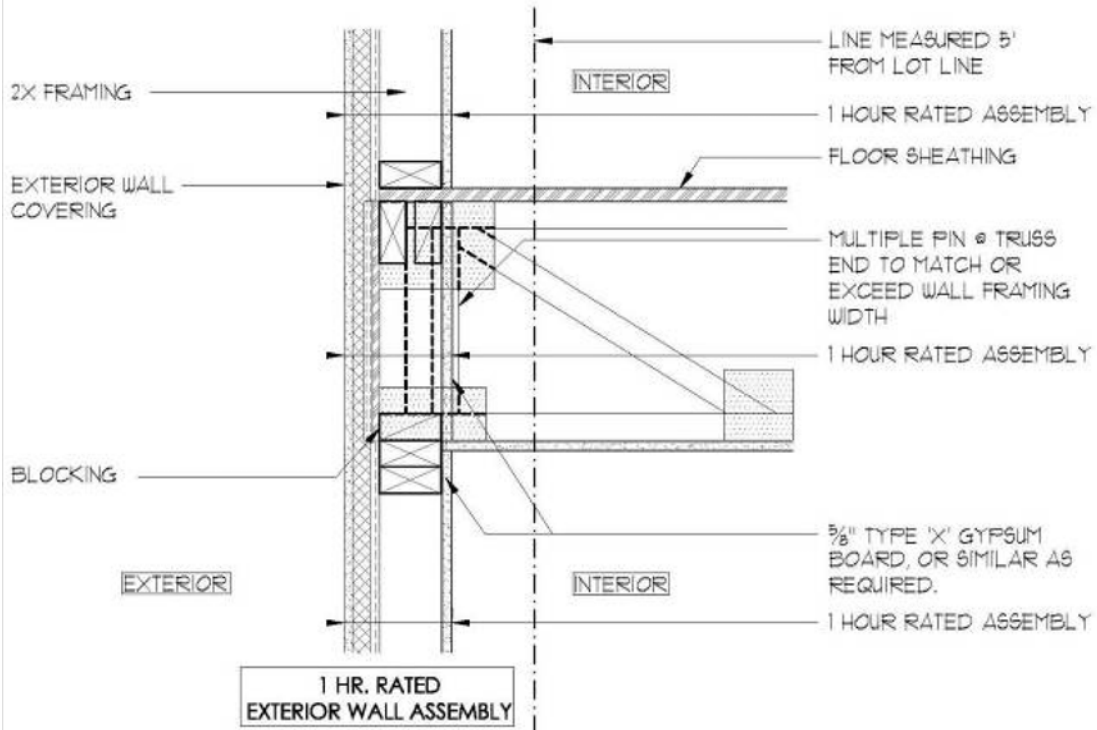
N.T.S.

THESE DRAWINGS ARE INTENDED TO ILLUSTRATE CODE INTERPRETATIONS RELEVANT TO SECTION R302.1 OF THE 2012 IRC AS AMENDED BY SNBO AND ADOPTED BY THE JURISDICTIONS COVERED IN SOUTHERN NEVADA. THESE DRAWINGS DO NOT COMMUNICATE CONSTRUCTION METHODS OR PRACTICES, NOR SHOULD ANY INFERENCE OF ANY CODE INTERPRETATION BEYOND THOSE ITEMS SPECIFIC TO R302.1 OCCUR. THE USE OF THESE DRAWINGS IS SUBJECT TO THE APPROVAL OF THE LOCAL BUILDING OFFICIAL.

W9

11/12/14

FIRE RESISTANCE RATED WALL CONSTRUCTION



PERPENDICULAR TRUSS BOTTOM CHORD BEARING

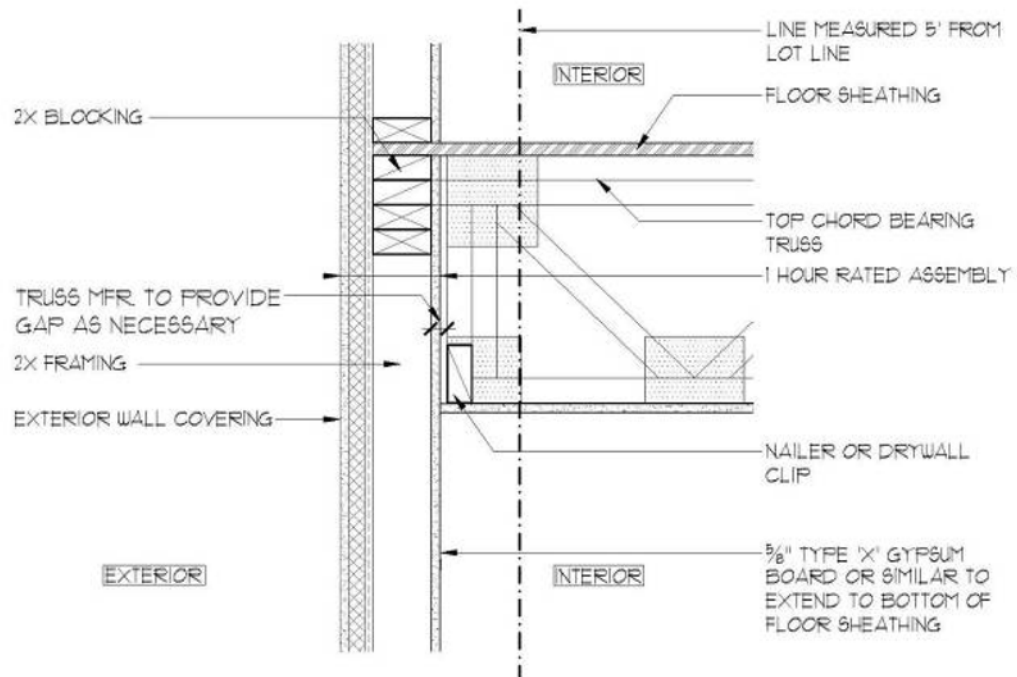
N.T.S.

THESE DRAWINGS ARE INTENDED TO ILLUSTRATE CODE INTERPRETATIONS RELEVANT TO SECTION R302.1 OF THE 2012 IRC AS AMENDED BY SNBO AND ADOPTED BY THE JURISDICTIONS COVERED IN SOUTHERN NEVADA. THESE DRAWINGS DO NOT COMMUNICATE CONSTRUCTION METHODS OR PRACTICES, NOR SHOULD ANY INFERENCE OF ANY CODE INTERPRETATION BEYOND THOSE ITEMS SPECIFIC TO R302.1 OCCUR. THE USE OF THESE DRAWINGS IS SUBJECT TO THE APPROVAL OF THE LOCAL BUILDING OFFICIAL.

W10

11/12/14

FIRE RESISTANCE RATED WALL CONSTRUCTION



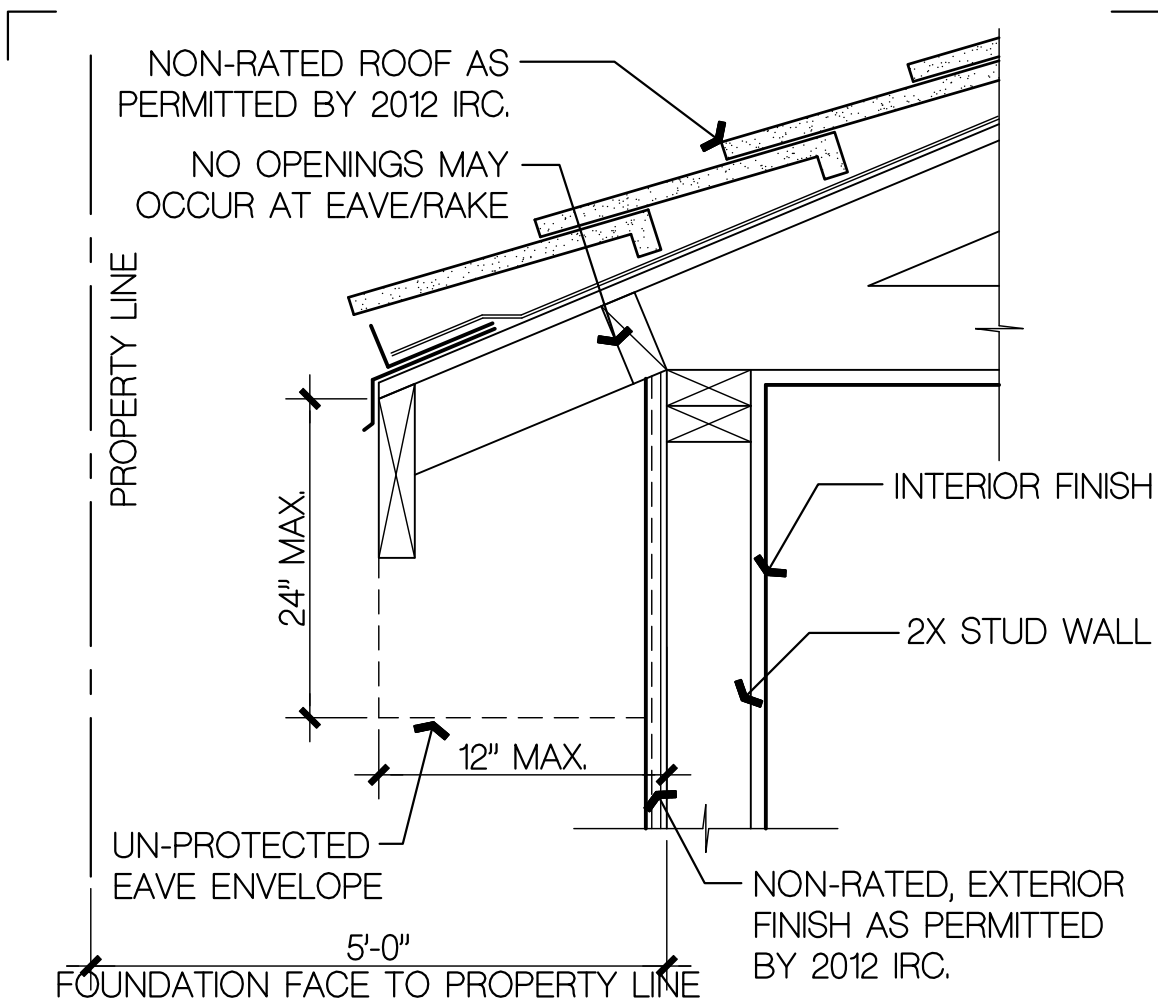
PERPENDICULAR TRUSS TOP CHORD BEARING

N.T.S.

THESE DRAWINGS ARE INTENDED TO ILLUSTRATE CODE INTERPRETATIONS RELEVANT TO SECTION R302.1 OF THE 2012 IRC AS AMENDED BY SNBO AND ADOPTED BY THE JURISDICTIONS COVERED IN SOUTHERN NEVADA. THESE DRAWINGS DO NOT COMMUNICATE CONSTRUCTION METHODS OR PRACTICES, NOR SHOULD ANY INFERENCE OF ANY CODE INTERPRETATION BEYOND THOSE ITEMS SPECIFIC TO R302.1 OCCUR. THE USE OF THESE DRAWINGS IS SUBJECT TO THE APPROVAL OF THE LOCAL BUILDING OFFICIAL.

W11

11/12/14



EXCEPTION 7:
WHEN THERE ARE NO EAVE, ATTIC, OR GABLE-END VENT OPENINGS, THE UNPROTECTED EAVE IS LIMITED TO A MAXIMUM OF 12" BEYOND THE WALL CONSTRUCTION INTO THE MINIMUM FIRE SEPARATION DISTANCE. THE UNPROTECTED EAVE PROJECTION IS FURTHER LIMITED TO A MAXIMUM DEPTH OF 24" FROM THE ROOF SHEATHING TO THE BOTTOM PROJECTION.

SOUTHERN NEVADA AMENDMENT TO SECTION R302.1

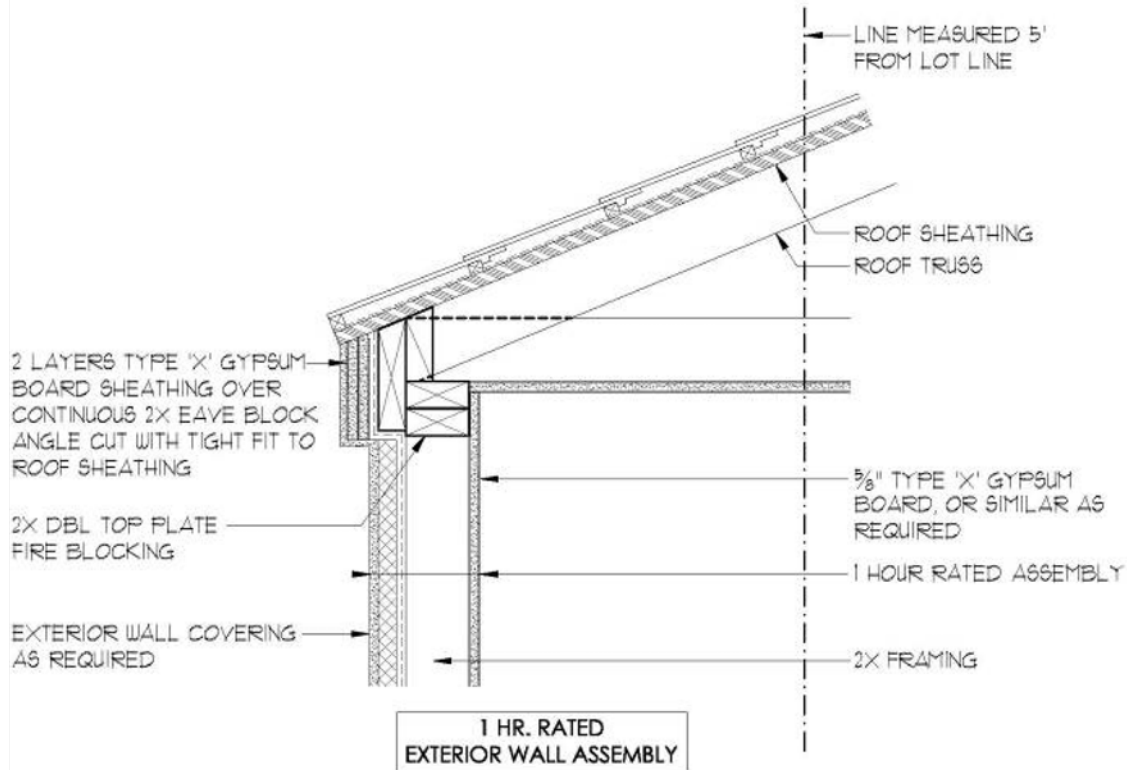
UNPROTECTED EAVE/RAKE N.T.S.

THESE DRAWINGS ARE INTENDED TO ILLUSTRATE CODE INTERPRETATIONS RELEVANT TO SECTION R302.1 OF THE 2012 IRC AS AMENDED BY SNBO AND ADOPTED BY THE JURISDICTIONS COVERED IN SOUTHERN NEVADA. THESE DRAWINGS DO NOT COMMUNICATE CONSTRUCTION METHODS OR PRACTICES, NOR SHOULD ANY INFERENCE OF ANY CODE INTERPRETATION BEYOND THOSE ITEMS SPECIFIC TO R302.1 OCCUR. THE USE OF THESE DRAWINGS IS SUBJECT TO THE APPROVAL OF THE LOCAL BUILDING OFFICIAL.

P1

11/12/14

FIRE RESISTANCE RATED WALL CONSTRUCTION



IF 3" MINIMUM SOLID MATERIAL IS PROVIDED AT THE EAVE AND PROTECTED BY 2 LAYERS 5/8" TYPE 'X' GYPSUM BOARD SHEATHING, THE INTERIOR SURFACE OF THE FIRE-RATED WALL ASSEMBLY IS NOT REQUIRED TO EXTEND TO THE ROOF SHEATHING, OTHERWISE IT SHALL EXTEND TO THE UNDERSIDE OF THE ROOF SHEATHING.

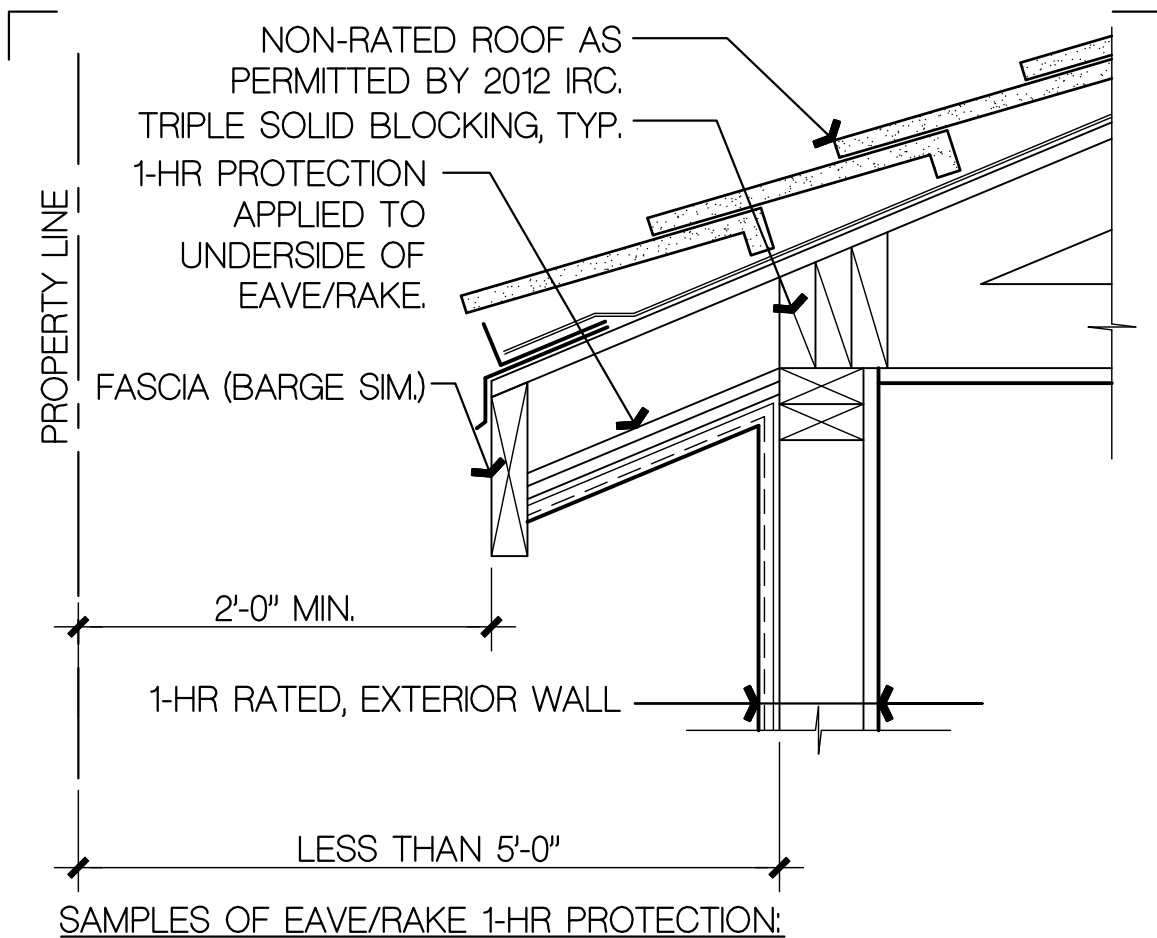
PERPENDICULAR TRUSS WALL TO ROOF EAVE / RAKE

N.T.S.

THESE DRAWINGS ARE INTENDED TO ILLUSTRATE CODE INTERPRETATIONS RELEVANT TO SECTION R302.1 OF THE 2012 IRC AS AMENDED BY SNBO AND ADOPTED BY THE JURISDICTIONS COVERED IN SOUTHERN NEVADA. THESE DRAWINGS DO NOT COMMUNICATE CONSTRUCTION METHODS OR PRACTICES, NOR SHOULD ANY INFERENCE OF ANY CODE INTERPRETATION BEYOND THOSE ITEMS SPECIFIC TO R302.1 OCCUR. THE USE OF THESE DRAWINGS IS SUBJECT TO THE APPROVAL OF THE LOCAL BUILDING OFFICIAL.

P2

11/12/14



1. EXT. FINISH O/ (2) LAYERS 5/8" TYPE "X" GYP. BD. APPLIED TO UNDERSIDE OF EAVE FRAMING SPACED 24" MAX.

METHOD 1 OF 2

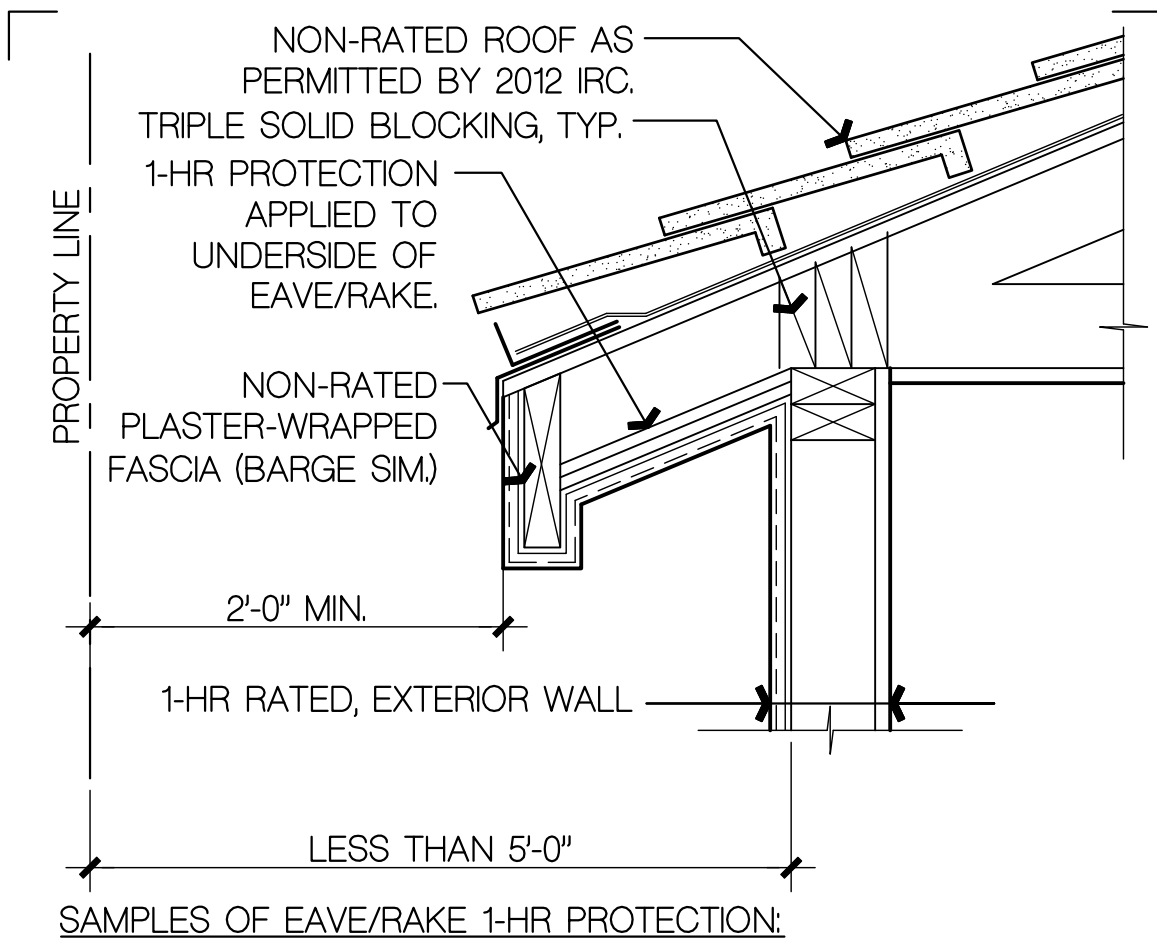
PROTECTED EAVE/RAKE

N.T.S.

THESE DRAWINGS ARE INTENDED TO ILLUSTRATE CODE INTERPRETATIONS RELEVANT TO SECTION R302.1 OF THE 2012 IRC AS AMENDED BY SNBO AND ADOPTED BY THE JURISDICTIONS COVERED IN SOUTHERN NEVADA. THESE DRAWINGS DO NOT COMMUNICATE CONSTRUCTION METHODS OR PRACTICES, NOR SHOULD ANY INFERENCE OF ANY CODE INTERPRETATION BEYOND THOSE ITEMS SPECIFIC TO R302.1 OCCUR. THE USE OF THESE DRAWINGS IS SUBJECT TO THE APPROVAL OF THE LOCAL BUILDING OFFICIAL.

P3

11/12/14



1. EXT. FINISH O/ (2) LAYERS 5/8" TYPE "X" GYP. BD. APPLIED TO UNDERSIDE OF EAVE FRAMING SPACED 24" MAX.

METHOD 2 OF 2

PROTECTED EAVE/RAKE

N.T.S.

THESE DRAWINGS ARE INTENDED TO ILLUSTRATE CODE INTERPRETATIONS RELEVANT TO SECTION R302.1 OF THE 2012 IRC AS AMENDED BY SNBO AND ADOPTED BY THE JURISDICTIONS COVERED IN SOUTHERN NEVADA. THESE DRAWINGS DO NOT COMMUNICATE CONSTRUCTION METHODS OR PRACTICES, NOR SHOULD ANY INFERENCE OF ANY CODE INTERPRETATION BEYOND THOSE ITEMS SPECIFIC TO R302.1 OCCUR. THE USE OF THESE DRAWINGS IS SUBJECT TO THE APPROVAL OF THE LOCAL BUILDING OFFICIAL.

P3a

11/12/14

FIRE RESISTANCE RATED WALL CONSTRUCTION

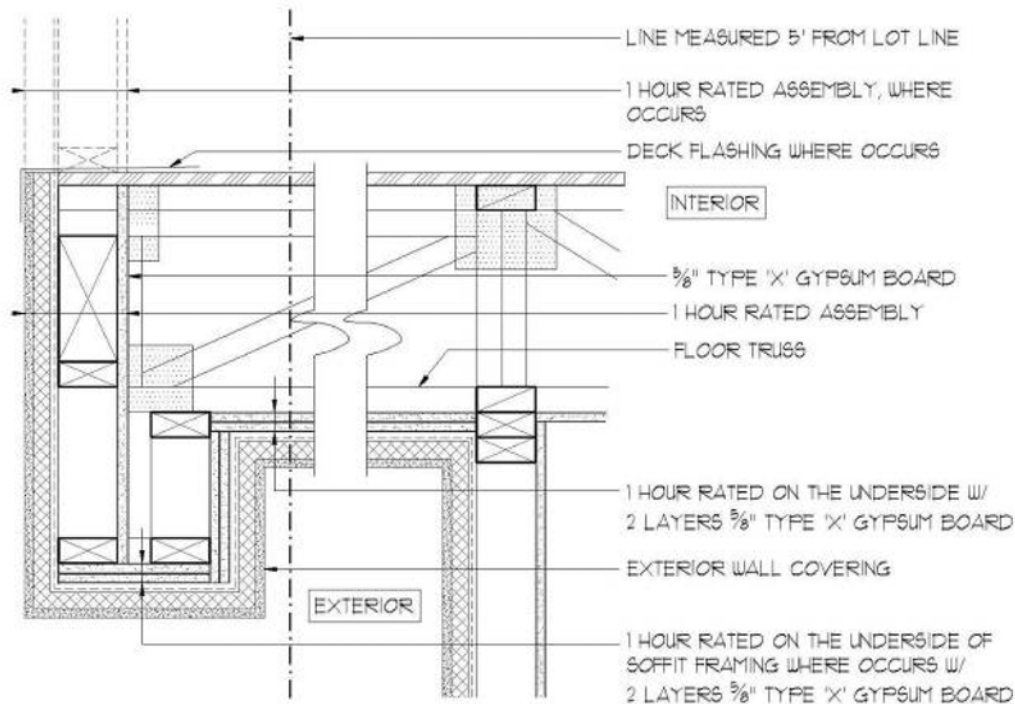


TABLE R302.1(1) - THE MINIMUM FIRE RESISTANCE RATING OF A PROJECTION SHALL BE 1-HOUR ON THE UNDERSIDE WHEN THE EXTERIOR WALL IS CLOSER THAN 5'-0" TO THE PROPERTY LINE.

OVERHANGING FLOORS AND DECKS SHALL BE CONSIDERED PROJECTIONS WHEN THE VOID IN THE WALL AREA BELOW IS NOT FACTORED IN THE ALLOWABLE 25% CALCULATION FOR THE OPENINGS WHEN PERMITTED BY TABLE R302.1(1).

NOTE: WHEN THE VOID IN THE WALL AREA BELOW THE OVERHANGING FLOOR IS FACTORED IN THE ALLOWABLE 25% CALCULATION, NO RATING IS REQUIRED UNDERSIDE OF THE OVERHANGING FLOOR OR SOFFIT.

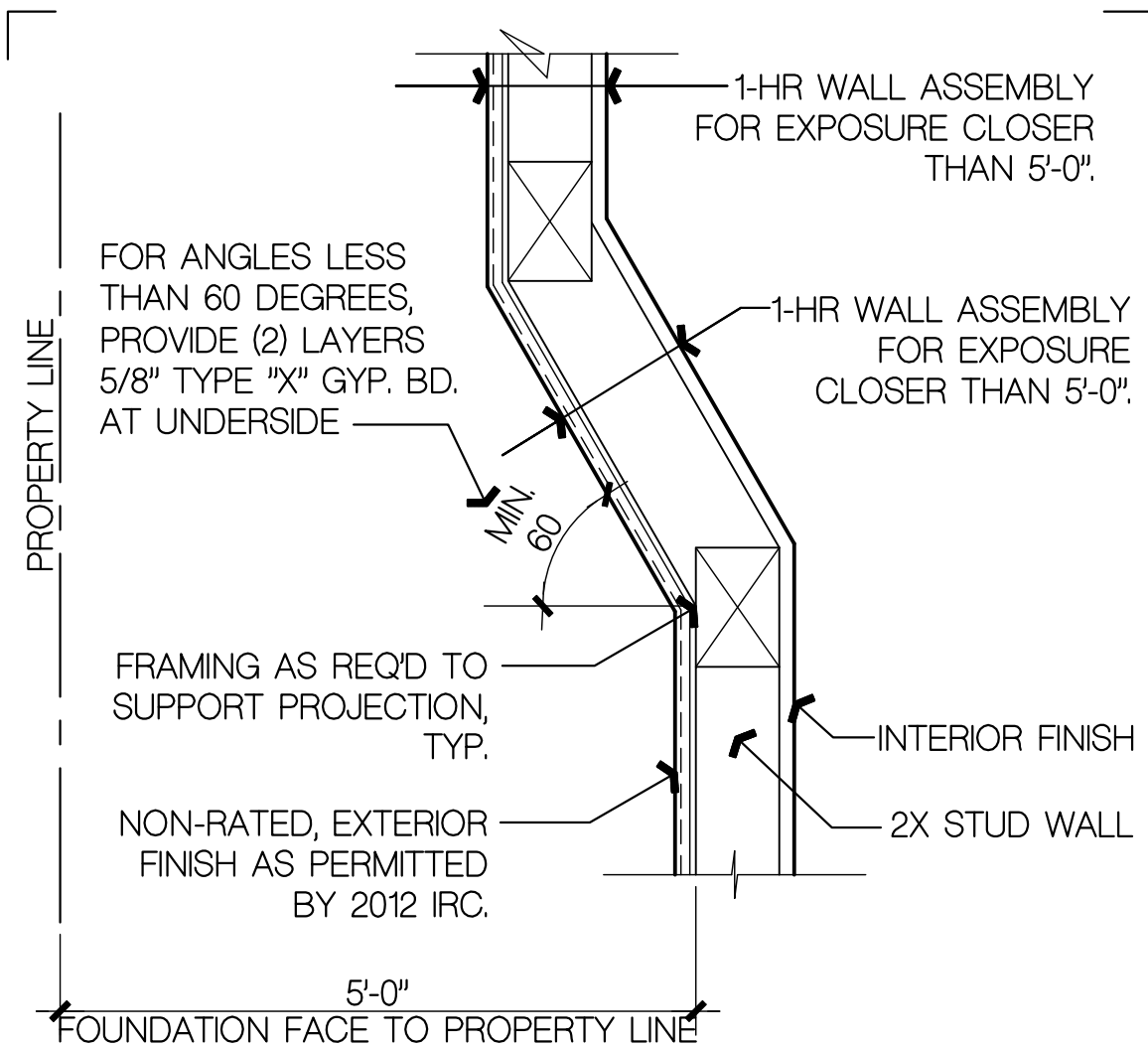
FLOOR / DECK AS PROJECTION

N.T.S.

THESE DRAWINGS ARE INTENDED TO ILLUSTRATE CODE INTERPRETATIONS RELEVANT TO SECTION R302.1 OF THE 2012 IRC AS AMENDED BY SNBO AND ADOPTED BY THE JURISDICTIONS COVERED IN SOUTHERN NEVADA. THESE DRAWINGS DO NOT COMMUNICATE CONSTRUCTION METHODS OR PRACTICES, NOR SHOULD ANY INFERENCE OF ANY CODE INTERPRETATION BEYOND THOSE ITEMS SPECIFIC TO R302.1 OCCUR. THE USE OF THESE DRAWINGS IS SUBJECT TO THE APPROVAL OF THE LOCAL BUILDING OFFICIAL.

P4

11/12/14



THE PROJECTION CONDITION DEPICTED HERE APPLIES TO MEDIA NICHES, BAY WINDOWS, AND OTHER SIMILAR PROJECTIONS THAT DO NOT CONTAIN OCCUPIABLE FLOOR SPACE. FOR PROJECTIONS OR CANTILEVERS SUPPORTING FLOOR SPACE ABOVE, SEE 1-HR PROJECTION DETAIL P4.

MEDIA CANTILEVER

N.T.S.

THESE DRAWINGS ARE INTENDED TO ILLUSTRATE CODE INTERPRETATIONS RELEVANT TO SECTION R302.1 OF THE 2012 IRC AS AMENDED BY SNBO AND ADOPTED BY THE JURISDICTIONS COVERED IN SOUTHERN NEVADA. THESE DRAWINGS DO NOT COMMUNICATE CONSTRUCTION METHODS OR PRACTICES, NOR SHOULD ANY INFERENCE OF ANY CODE INTERPRETATION BEYOND THOSE ITEMS SPECIFIC TO R302.1 OCCUR. THE USE OF THESE DRAWINGS IS SUBJECT TO THE APPROVAL OF THE LOCAL BUILDING OFFICIAL.

P5

11/12/14

FIRE RESISTANCE RATED WALL CONSTRUCTION

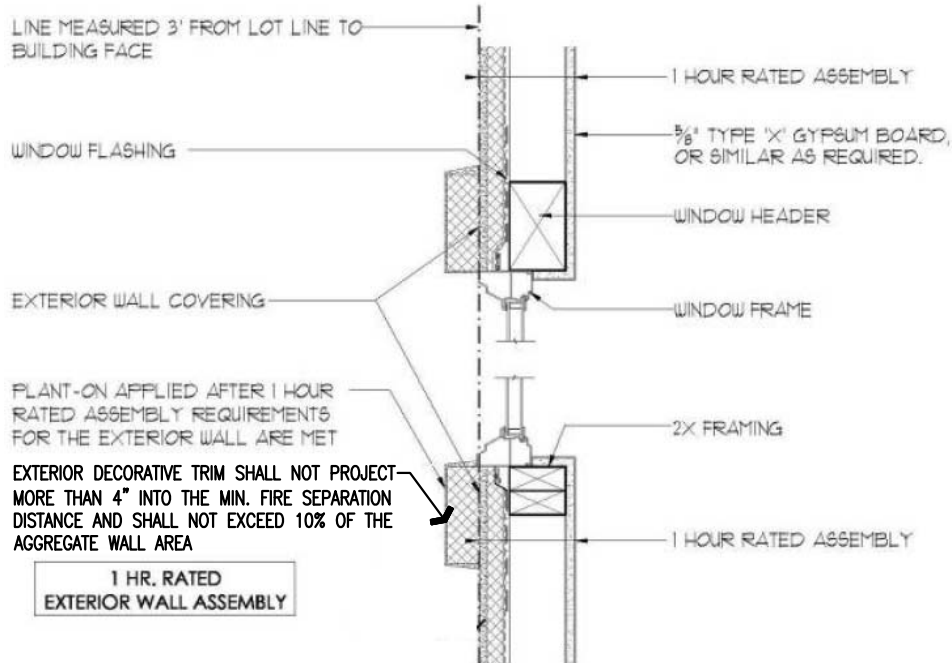


TABLE R302.1(1) - WALLS REQUIRED TO BE FIRE RESISTANCE RATED AND MEASURED A MINIMUM 3'-0" TO BUILDING FACE FROM PROPERTY LINE ARE PERMITTED 25% MAXIMUM OF WALL AREA AS UNPROTECTED OPEN.

UNPROTECTED PLANT-ONS SURROUNDING THE OPENING SHALL BE ALLOWED TO EXTEND BEYOND THE EXTERIOR WALL FACE AS LONG AS THEY EXTEND NO MORE THAN 4" AND ARE APPLIED AFTER THE FIRE-RESISTANCE-RATED ASSEMBLY REQUIREMENTS OF THE WALL ARE MET.

WINDOW PLANT-ON

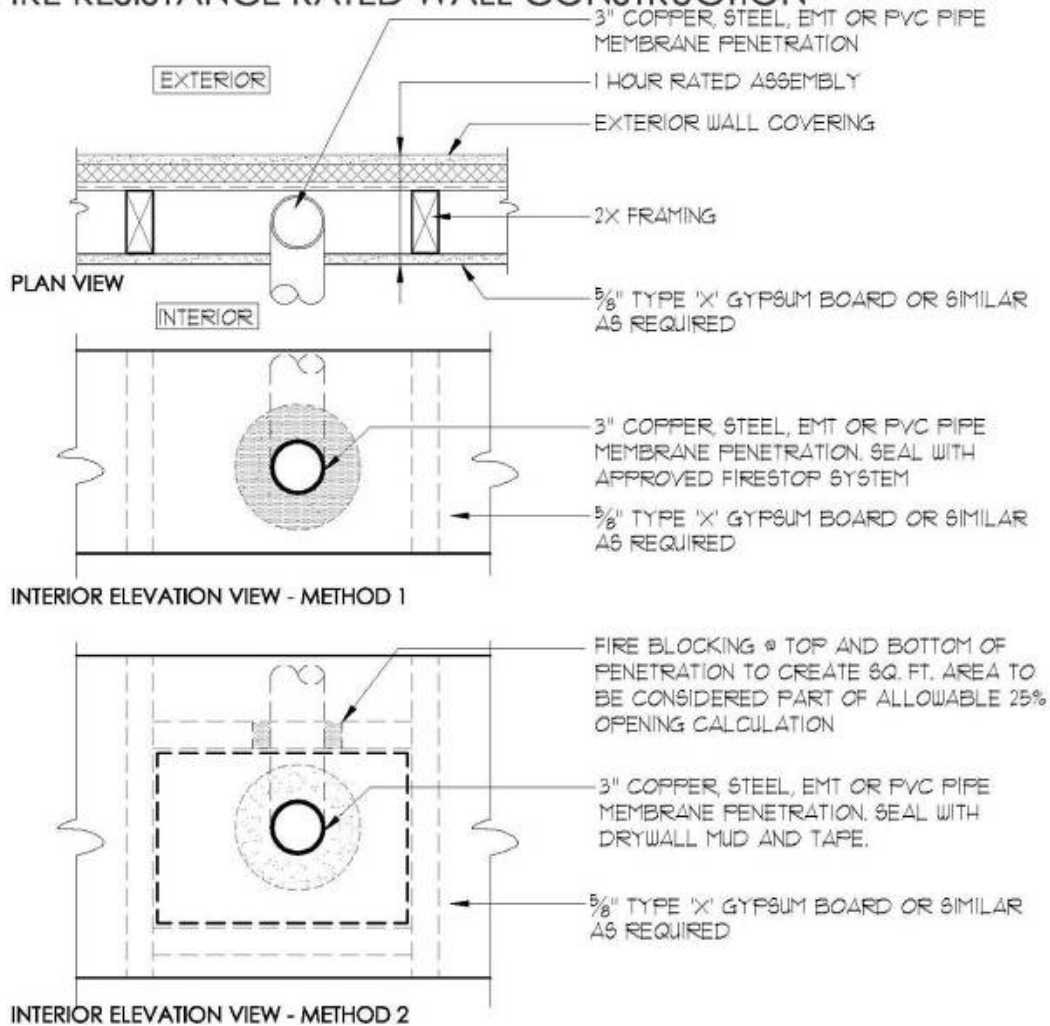
N.T.S.

THESE DRAWINGS ARE INTENDED TO ILLUSTRATE CODE INTERPRETATIONS RELEVANT TO SECTION R302.1 OF THE 2012 IRC AS AMENDED BY SNBO AND ADOPTED BY THE JURISDICTIONS COVERED IN SOUTHERN NEVADA. THESE DRAWINGS DO NOT COMMUNICATE CONSTRUCTION METHODS OR PRACTICES, NOR SHOULD ANY INFERENCE OF ANY CODE INTERPRETATION BEYOND THOSE ITEMS SPECIFIC TO R302.1 OCCUR. THE USE OF THESE DRAWINGS IS SUBJECT TO THE APPROVAL OF THE LOCAL BUILDING OFFICIAL.

P6

11/12/14

FIRE RESISTANCE RATED WALL CONSTRUCTION



R302.4.2 MEMBRANE PENETRATIONS.

"MEMBRANE PENETRATIONS SHALL COMPLY WITH SECTION R302.4.1.

R302.4.1 FIRE-RESISTANCE-RATED ASSEMBLY. PENETRATIONS SHALL BE INSTALLED AS TESTED IN THE APPROVED FIRE-RESISTANCE-RATED ASSEMBLY."

METHOD 1

PENETRATION SHALL BE SEALED WITH AN APPROVED FIRESTOP SYSTEM.

METHOD 2

THE AREA SURROUNDING PIPES LOCATED WITHIN THE WALL CAVITY AND PENETRATING ONLY ONE SIDE OF THE APPROVED FIRE-RESISTANCE-RATED ASSEMBLY MAY BE CONSIDERED PART OF ALLOWABLE 25% CALCULATION WHEN AN APPROVED FIREBLOCKING IS PROVIDED AT TOP AND BOTTOM.

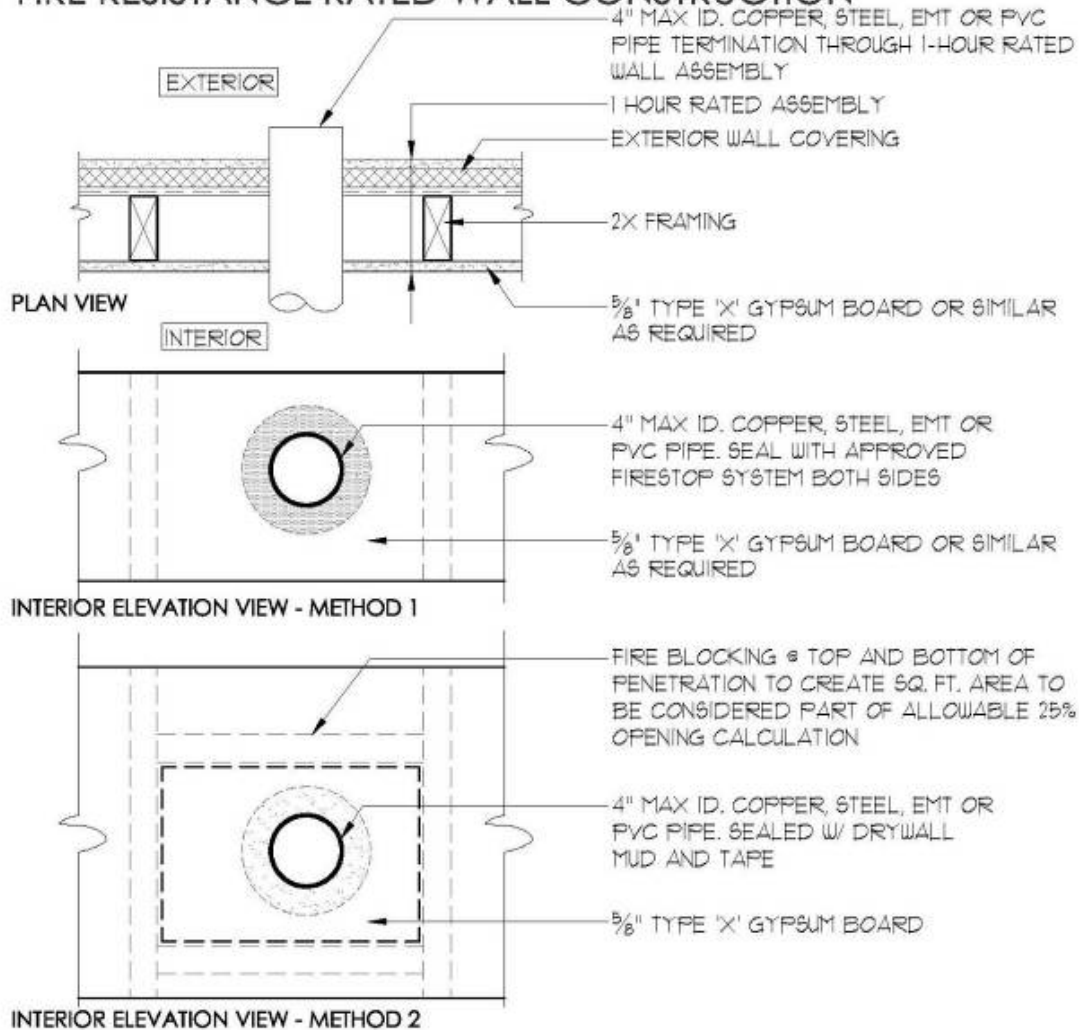
MEMBRANE PENETRATIONS N.T.S.

THESE DRAWINGS ARE INTENDED TO ILLUSTRATE CODE INTERPRETATIONS RELEVANT TO SECTION R302.1 OF THE 2012 IRC AS AMENDED BY SNBO AND ADOPTED BY THE JURISDICTIONS COVERED IN SOUTHERN NEVADA. THESE DRAWINGS DO NOT COMMUNICATE CONSTRUCTION METHODS OR PRACTICES, NOR SHOULD ANY INFERENCE OF ANY CODE INTERPRETATION BEYOND THOSE ITEMS SPECIFIC TO R302.1 OCCUR. THE USE OF THESE DRAWINGS IS SUBJECT TO THE APPROVAL OF THE LOCAL BUILDING OFFICIAL.

01

11/12/14

FIRE RESISTANCE RATED WALL CONSTRUCTION



R302.4.1 THROUGH PENETRATIONS.

"THROUGH PENETRATIONS OF FIRE-RESISTANCE-RATED WALL OR FLOOR ASSEMBLIES SHALL COMPLY WITH SECTION R302.2 OR R302.3"

METHOD 1

PENETRATION SHALL BE SEALED WITH AN APPROVED FIRESTOP SYSTEM BOTH SIDES.

METHOD 2

THE AREA SURROUNDING PIPES PENETRATING BOTH SIDES OF THE APPROVED FIRE-RESISTANCE-RATED ASSEMBLY MAY BE CONSIDERED PART OF ALLOWABLE 25% CALCULATION WHEN AN APPROVED FIREBLOCKING IS PROVIDED AT TOP AND BOTTOM.

THOUGH PENETRATIONS

N.T.S.

THESE DRAWINGS ARE INTENDED TO ILLUSTRATE CODE INTERPRETATIONS RELEVANT TO SECTION R302.1 OF THE 2012 IRC AS AMENDED BY SNBO AND ADOPTED BY THE JURISDICTIONS COVERED IN SOUTHERN NEVADA. THESE DRAWINGS DO NOT COMMUNICATE CONSTRUCTION METHODS OR PRACTICES, NOR SHOULD ANY INFERENCE OF ANY CODE INTERPRETATION BEYOND THOSE ITEMS SPECIFIC TO R302.1 OCCUR. THE USE OF THESE DRAWINGS IS SUBJECT TO THE APPROVAL OF THE LOCAL BUILDING OFFICIAL.

02

11/12/14

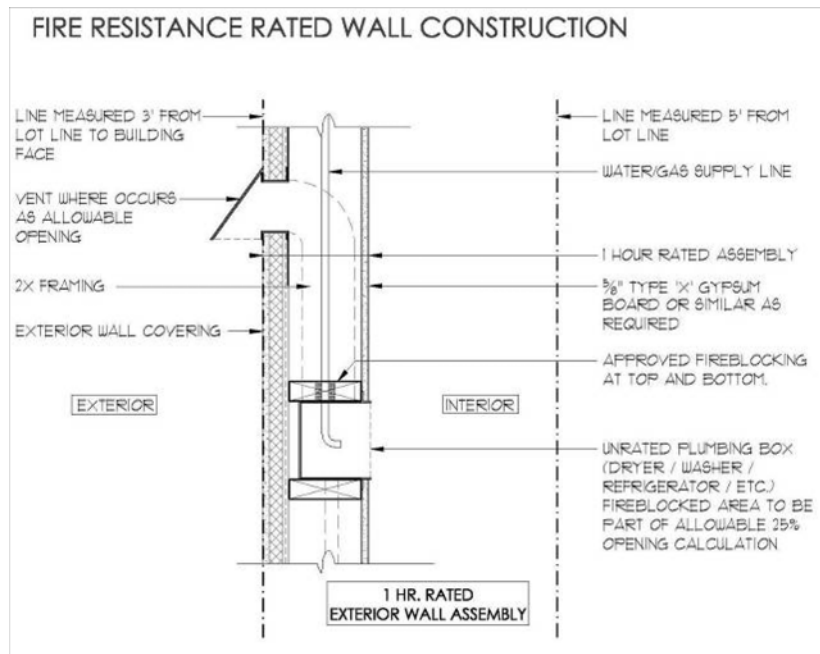


TABLE R302.1(1) - WALLS REQUIRED TO BE FIRE RESISTANCE RATED AND MEASURED A MINIMUM 3'-0" TO BUILDING FACE FROM PROPERTY LINE ARE PERMITTED 25% MAXIMUM OF WALL AREA AS UNPROTECTED OPEN.

RECESSED PLUMBING BOXES SUCH AS THOSE USED FOR DRYERS, WASHERS, REFRIGERATORS, OR OTHER SIMILAR APPLIANCES LOCATED WITHIN THE WALL CAVITY MAY BE CONSIDERED PART OF THE ALLOWABLE 25% CALCULATION WHEN AN APPROVED FIREBLOCKING IS PROVIDED AT TOP AND BOTTOM.

DRYER VENTS MAY BE CONSIDERED PART OF ALLOWABLE 25% CALCULATION WITHOUT BLOCKING.

N.T.S.

PLUMBING BOX AS OPENING

THESE DRAWINGS ARE INTENDED TO ILLUSTRATE CODE INTERPRETATIONS RELEVANT TO SECTION R302.1 OF THE 2012 IRC AS AMENDED BY SNBO AND ADOPTED BY THE JURISDICTIONS COVERED IN SOUTHERN NEVADA. THESE DRAWINGS DO NOT COMMUNICATE CONSTRUCTION METHODS OR PRACTICES, NOR SHOULD ANY INFERENCE OF ANY CODE INTERPRETATION BEYOND THOSE ITEMS SPECIFIC TO R302.1 OCCUR. THE USE OF THESE DRAWINGS IS SUBJECT TO THE APPROVAL OF THE LOCAL BUILDING OFFICIAL.

03

11/12/14

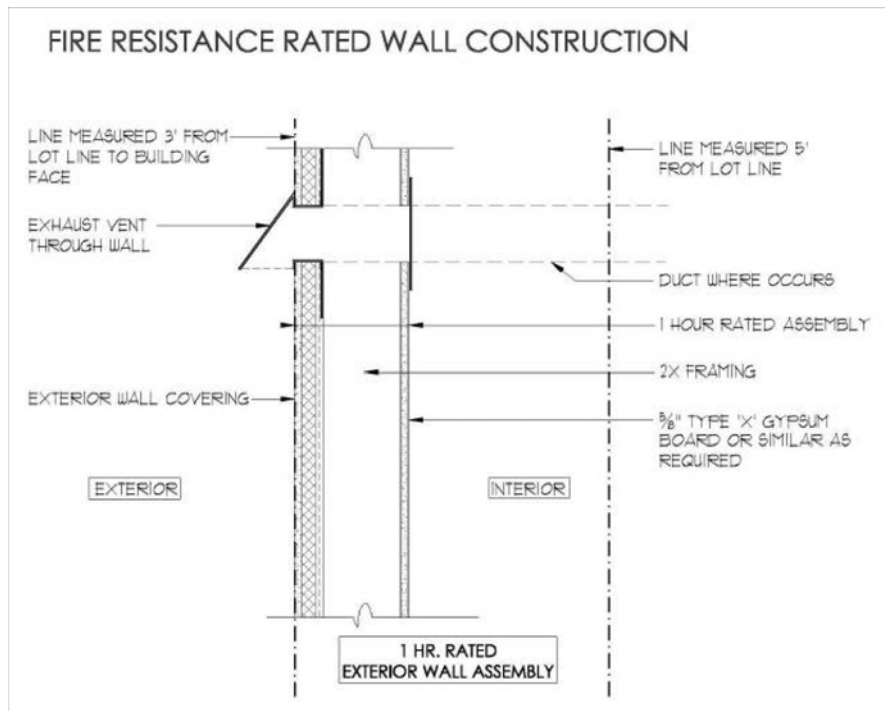


TABLE R302.1(1) - WALLS REQUIRED TO BE FIRE RESISTANCE RATED AND MEASURED A MINIMUM 3'-0" TO BUILDING FACE FROM PROPERTY LINE ARE PERMITTED 25% MAXIMUM OF WALL AREA AS UNPROTECTED OPEN.

EXHAUST VENTS TO BE CONSIDERED AS OPENING AND PART OF ALLOWABLE 25% CALCULATION.

N.T.S.

EXHAUST VENT AS OPENING

THESE DRAWINGS ARE INTENDED TO ILLUSTRATE CODE INTERPRETATIONS RELEVANT TO SECTION R302.1 OF THE 2012 IRC AS AMENDED BY SNBO AND ADOPTED BY THE JURISDICTIONS COVERED IN SOUTHERN NEVADA. THESE DRAWINGS DO NOT COMMUNICATE CONSTRUCTION METHODS OR PRACTICES, NOR SHOULD ANY INFERENCE OF ANY CODE INTERPRETATION BEYOND THOSE ITEMS SPECIFIC TO R302.1 OCCUR. THE USE OF THESE DRAWINGS IS SUBJECT TO THE APPROVAL OF THE LOCAL BUILDING OFFICIAL.

04

11/12/14

FIRE RESISTANCE RATED WALL CONSTRUCTION

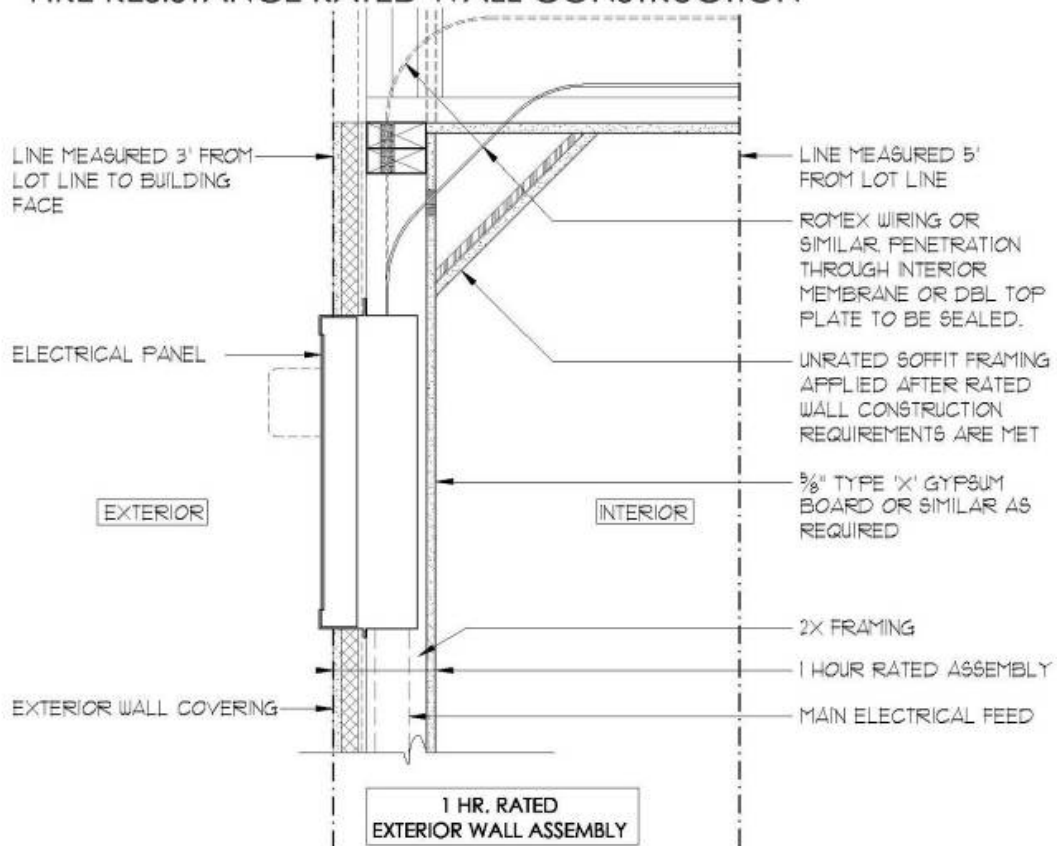


TABLE R302.1(1) - WALLS REQUIRED TO BE FIRE RESISTANCE RATED AND MEASURED A MINIMUM 3'-0" TO BUILDING FACE FROM PROPERTY LINE ARE PERMITTED 25% MAXIMUM OF WALL AREA AS UNPROTECTED OPEN.

ELECTRICAL PANEL AREA WHEN RECESSED IN WALL CAVITY MAY BE CONSIDERED AND PART OF ALLOWABLE 25% CALCULATION.

ELECTRICAL PANEL AS OPENING

N.T.S.

THESE DRAWINGS ARE INTENDED TO ILLUSTRATE CODE INTERPRETATIONS RELEVANT TO SECTION R302.1 OF THE 2012 IRC AS AMENDED BY SNBO AND ADOPTED BY THE JURISDICTIONS COVERED IN SOUTHERN NEVADA. THESE DRAWINGS DO NOT COMMUNICATE CONSTRUCTION METHODS OR PRACTICES, NOR SHOULD ANY INFERENCE OF ANY CODE INTERPRETATION BEYOND THOSE ITEMS SPECIFIC TO R302.1 OCCUR. THE USE OF THESE DRAWINGS IS SUBJECT TO THE APPROVAL OF THE LOCAL BUILDING OFFICIAL.

05

11/12/14