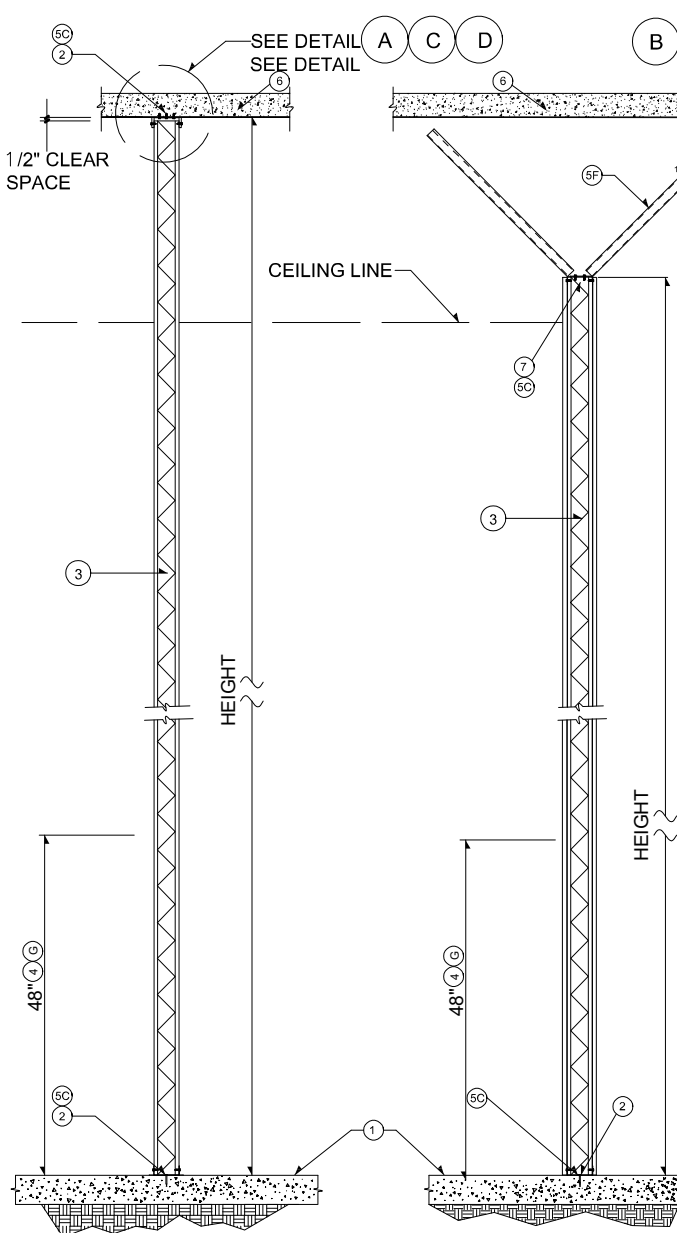
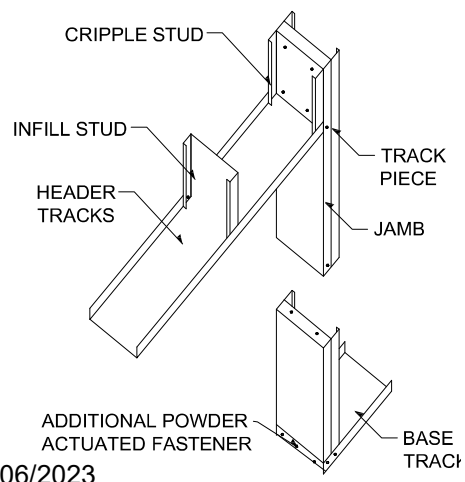
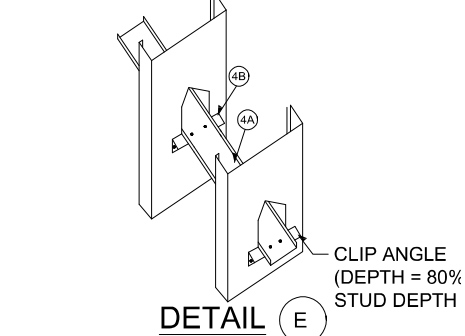
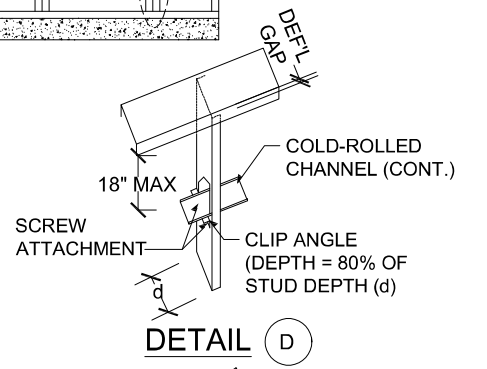
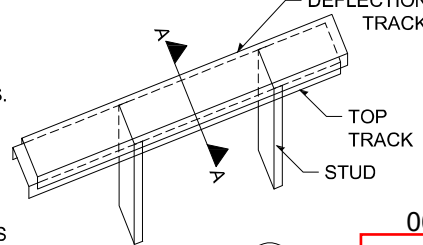
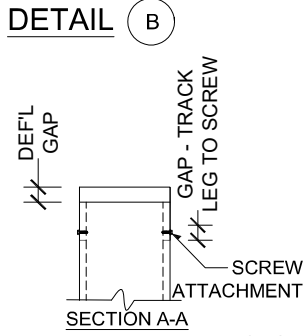
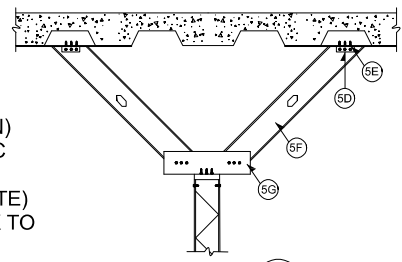
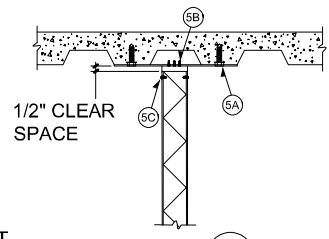
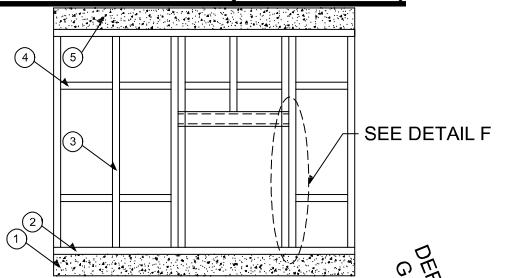


NON - BEARING STEEL STUD WALL PARTITION DETAIL TO CONCRETE DECK (2021 IBC)



STUD HEIGHT	METAL STUD SIZE 24" O.C.
UP TO 13'-0" (SEE NOTE 9)	362S125-18
UP TO 19'-0" (SEE NOTE 9)	362S125-33
UP TO 9'-0" IF BRACED AT 48" O.C. (SEE 4)	362S125-18
UP TO 14'-0" IF BRACED AT 48" O.C. (SEE 4)	362S125-33

- LEGEND:**
- 1) EXISTING 3.5" THICK CONCRETE WITH A MINIMUM COMPRESSIVE STRENGTH f_c 2,500 PSI
 - 2) TRACK SAME THICKNESS AS STUDS ATTACHED TO CONCRETE SLAB WITH HILTI POWDER ACTUATED FASTENERS 0.157" ϕ X-U WITH 1.25" (MIN) PENETRATION INTO CONCRETE AT 32" O.C. OR EQUAL (ICC ESR-2269)
 - 3) METAL STUDS (SEE SCHEDULE)
 - 4) BRACING (SEE DETAIL E) @ 48" O.C. NOT REQUIRED IF COMPOSITE CONSTRUCTION (SEE NOTE 9)
 - 4A) 75U050-54 AT 48" O.C.
 - 4B) 1.5"x1.5"x3" LONG X 16GA WITH 2-#8 SCREWS AT STUD AND 2-#8 SCREWS AT 75U050-54 TOP TRACK
 - 5) 18" LONG X 6" WIDE 12 GA PLATE WITH 2-0.157" ϕ X-U WITH 1.25" (MIN) PENETRATION INTO CONCRETE (ICC ESR-2269)
 - 5A) 3-#10 SCREWS (TOP TRACK TO PLATE)
 - 5B) #10 SCREW EACH SIDE (TOP TRACK TO STUD) (TYP)
 - 5C) 2"x2"x16GAX18" LONG ANGLE WITH 2-HILTI 0.157" ϕ X-U WITH 1.25" (MIN) PENETRATION INTO CONCRETE (ICC ESR-2269)
 - 5D) 3-#10 SCREWS (BRACE TO ANGLE)
 - 5E) 362S125-33 BRACE AT 48" O.C. UP TO 8' LONG
 - 5F) 2"x2"x16GAX18" LONG ANGLE ATTACHED WITH 3-#10 SCREWS TO TOP BRACE AND 3-#10 SCREWS TO TOP TRACK
 - 6) EXISTING CONCRETE WITH A MINIMUM COMPRESSIVE STRENGTH f_c OF 3,000 PSI OVER PROFILE STEEL DECK
 - 7) CLIP BRACE FLANGE TO FORM SHOE WITH 2-#10 SCREWS OR SEE DETAIL B

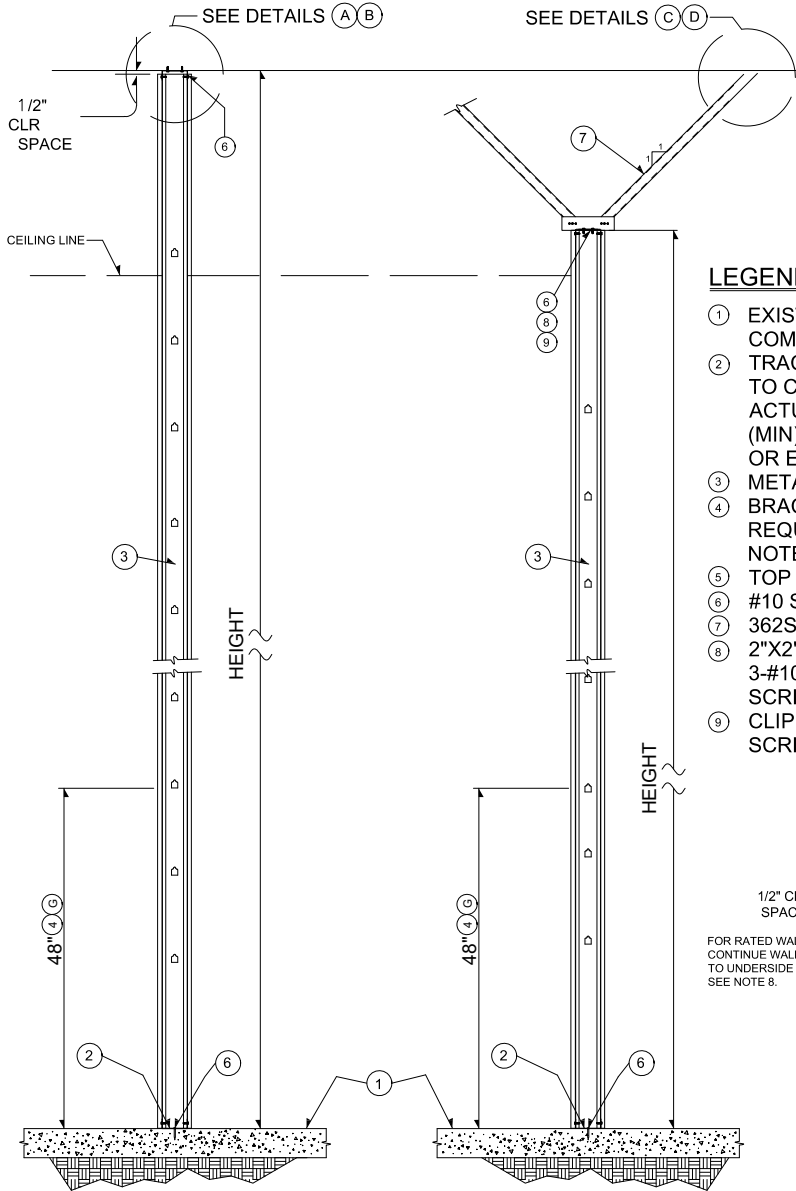


- NOTES:**
- 1) MAXIMUM DOOR/WINDOW OPENING 4' - 0"
 - 2) 5 PSF MAX. LATERAL LOAD.
 - 3) F_y (MIN.) = 33 KSI.
 - 4) L/120 DEFLECTION LIMIT.
 - 5) FOR H > 18' - 0" AND BRACING > 8' - 0", SUBMIT ENGINEERING DESIGN AND DETAILS.
 - 6) THE DETAILS SHOWN ARE INTENDED TO SERVE AS A GUIDE ONLY. THE DESIGN PROFESSIONAL MAY SUBMIT ALTERNATE DESIGN AND DETAILS

- 7) NOT APPLICABLE TO SHEAR WALLS.
- 8) SEE ARCHITECTURAL REQUIREMENTS FOR RATED WALLS.
- 9) COMPOSITE LIMITING HEIGHTS ARE BASED ON A SINGLE LAYER OF 5/8" TYPE X GYPSUM BOARD INSTALLED IN THE VERTICAL OR HORIZONTAL ORIENTATION TO BOTH SIDES OF THE WALL OVER FULL HEIGHT USING MINIMUM NO. 6 TYPE S DRYWALL SCREWS SPACED A MAXIMUM OF 12" O.C. FOR STUDS AT 24" SPACING, AND 16" O.C. FOR STUDS AT 16" AND 12" SPACING.

DETAIL C DETAIL D DETAIL E DETAIL F

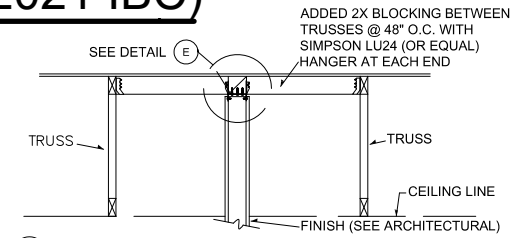
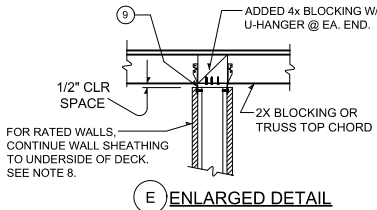
NON - BEARING STEEL STUD WALL PARTITION DETAIL - TO WOOD (2021 IBC)



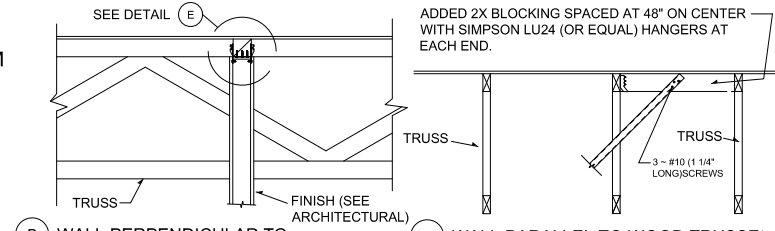
STUD HEIGHT	METAL STUD SIZE 24" O.C.
UP TO 13'-0" (SEE NOTE 9)	362S125-18
UP TO 19'-0" (SEE NOTE 9)	362S125-33
UP TO 9'-0" IF BRACED AT 48" O.C. (SEE 4)	362S125-18
UP TO 14'-0" IF BRACED AT 48" O.C. (SEE 4)	362S125-33

LEGEND:

- ① EXISTING 3.5" THICK CONCRETE WITH A MINIMUM COMPRESSIVE STRENGTH f_c 2,500 PSI
- ② TRACK SAME THICKNESS AS STUDS ATTACHED TO CONCRETE SLAB WITH HILTI POWDER ACTUATED FASTENERS 0.157" ϕ X-U WITH 1.25" (MIN) PENETRATION INTO CONCRETE AT 32" O.C. OR EQUAL (ICC ESR-2269)
- ③ METAL STUDS (SEE SCHEDULE)
- ④ BRACING (SEE DETAIL G) @ 48" O.C. NOT REQUIRED IF COMPOSITE CONSTRUCTION (SEE NOTE 9)
- ⑤ TOP TRACK
- ⑥ #10 SCREWS EACH SIDE TRACK TO STUD (TYP)
- ⑦ 362S125-33 BRACE AT 48" O.C. UP TO 8' LONG
- ⑧ 2"X2"X16GAX18" LONG ANGLE ATTACHED WITH 3-#10 SCREWS TO TOP BRACE AND 3-#10 SCREWS TO TOP TRACK
- ⑨ CLIP BRACE FLANGE TO FORM SHOE WITH 2-#10 SCREWS OR SEE ⑧

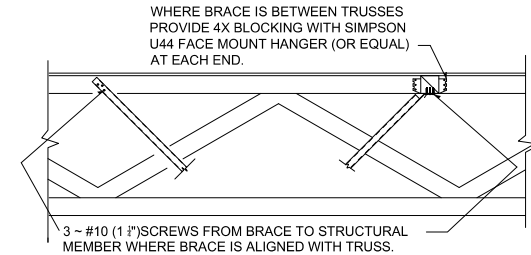


(A) WALL PARALLEL TO WOOD TRUSSES

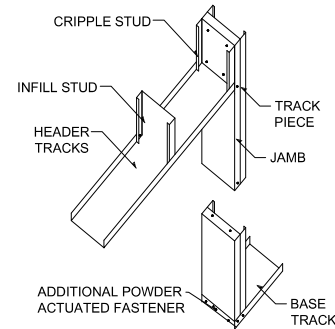


(B) WALL PERPENDICULAR TO WOOD TRUSSES

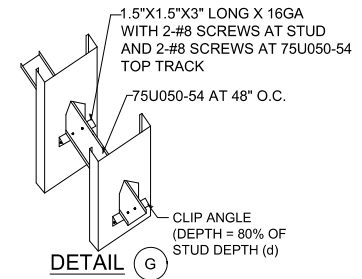
(C) WALL PARALLEL TO WOOD TRUSSES



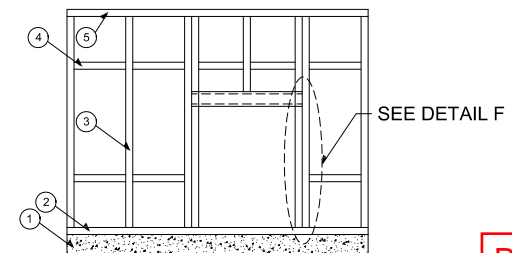
(D) WALL PERPENDICULAR TO WOOD TRUSSES



DETAIL (F)



DETAIL (G)



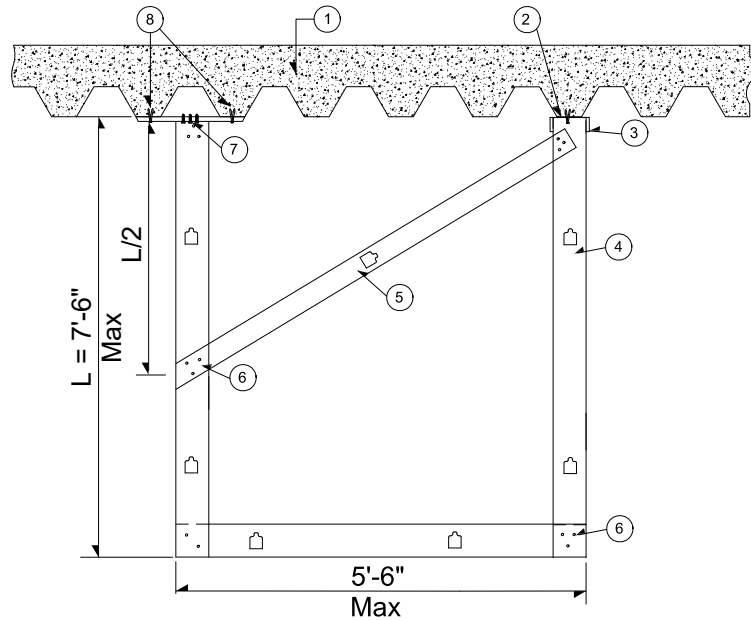
SEE DETAIL F

NOTES: NON - BEARING INTERIOR WALL DETAILS

- 1) MAXIMUM DOOR/WINDOW OPENING IS 4.0'.
- 2) 5 POUNDS PER SQUARE FOOT MAX. LATERAL LOAD.
- 3) F_y (MIN.) = 33 KSI.
- 4) DEFLECTION LIMIT: $L/120$
- 5) FOR $H > 18' - 0"$ AND BRACING $> 8' - 0"$ SUBMIT ENGINEERING DESIGN AND DETAILS.
- 6) THE DETAILS SHOWN ARE INTENDED TO SERVE AS A GUIDE ONLY. THE DESIGN PROFESSIONAL MAY SUBMIT AN ALTERNATE DESIGN AND DETAILS THAT COMPLY WITH THE 2021 IBC

- 7) NOT APPLICABLE TO SHEAR WALLS.
- 8) SEE ARCHITECTURAL REQUIREMENTS FOR RATED WALLS.
- 9) COMPOSITE LIMITING HEIGHTS ARE BASED ON A SINGLE LAYER $\frac{5}{8}$ " TYPE X GYPSUM BOARD INSTALLED IN THE VERTICAL OR HORIZONTAL ORIENTATION TO BOTH SIDES OF THE WALL OVER FULL HEIGHT USING MINIMUM NO 6 TYPE S DRYWALL SCREWS SPACED A MAXIMUM 12" O.C. FOR STUDS AT 24" SPACING, AND 16" O.C. FOR STUDS AT 16" AND 12" SPACING.

STEEL STUD SOFFIT FRAMING DETAILS FOR ATTACHMENT TO CONCRETE DECKS



LEGEND:

- ① EXISTING CONCRETE WITH A MINIMUM COMPRESSIVE STRENGTH f_c 3,000 PSI OVER PROFILE STEEL DECK
- ② CONTINUOUS 362T125-30 WITH $3/8"$ ϕ HILTI KWIK BOLT TZ (KB-TZ) WITH 2" EFFECTIVE EMBEDMENT (MIN.) AT 24.0" O.C. MAX (ICC ESR-1917) SPECIAL INSPECTION IS REQUIRED.
- ③ #10 SCREWS EACH SIDE (TYP.)
- ④ 362S125-30 AT 24.0" O.C. MAX
- ⑤ 362S125-33 AT 48" O.C. MAX
- ⑥ 3 - #10 SCREWS (TYP.)
- ⑦ 3 - #10 SCREWS 362T125-30 TRACK TO EACH PLATE
- ⑧ 12 GA PLATE (OR 18 GA CLIP ANGLE THAT MAY BE USED IN ALTERNATE STEEL DECK DIRECTION) AT 24" O.C. (MAX) W/ 2- $3/8"$ ϕ HILTI KWIK BOLT TZ (KB-TZ) WITH 2" EFFECTIVE EMBEDMENT (ICC ESR 1917) SPECIAL INSPECTION IS REQUIRED.

NOTES:

1. 5 PSF LATERAL LOAD
2. F_y (MIN.) = 33 ksi
3. 1/2" OR 5/8" GYPSUM WALLBOARD ASSEMBLY PER THE 2021 IBC CHAPTER 25 AND TABLE 2506.2 (TYPICAL)
4. THESE DETAILS ARE GUIDELINES ONLY. THE REGISTERED DESIGN PROFESSIONAL (PROFESSIONAL ENGINEER) MAY PROVIDE ALTERNATE DESIGN AND CALCULATIONS THAT COMPLY WITH THE 2021 IBC

SPECIAL INSPECTION/QAA IS REQUIRED

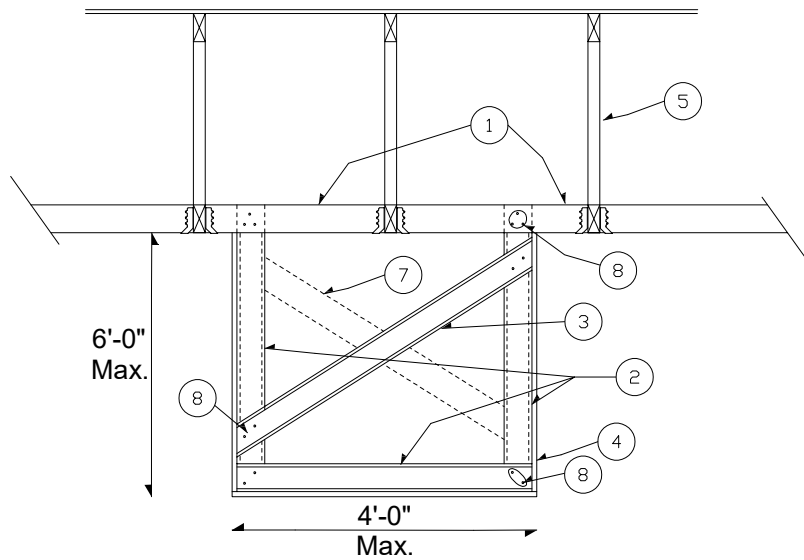
POST-INSTALLED ANCHORS' QA/SPECIAL INSPECTION (EXPANSION ANCHORS AND/OR CONCRETE SCREWS AND/OR EPOXY ANCHORS) IN HARDENED CONCRETE PER THE EVALUATION REPORT (I.C.C. AND/OR I.A.P.M.O. AND/OR CITY OF LOS ANGELES AND MANUFACTURER'S SPECIFICATIONS) **WILL BE REQUIRED TO BE COMPLETED BY AN APPROVED THIRD PARTY QA/SPECIAL INSPECTION AGENCY**. IF THE ONLY SPECIAL INSPECTION REQUIRED ON THE PROJECT IS POST-INSTALLED ANCHORS THEN THE FORM WILL ACT AS THE QA/SPECIAL INSPECTION AGREEMENT. THE FORMS ARE LOCATED AT THE FOLLOWING WEBSITE ADDRESS AND INCLUDED IN THIS ANNOUNCEMENT. THE FORMS ARE LOCATED AT THE FOLLOWING WEBSITE ADDRESS:

[HTTPS://WWW.LASVEGASNEVADA.GOV/GOVERNMENT/DEPARTMENTS/BUILDING-SAFETY/BUILDING-SAFETY-RESOURCES](https://www.lasvegasnevada.gov/government/departments/building-safety/building-safety-resources)

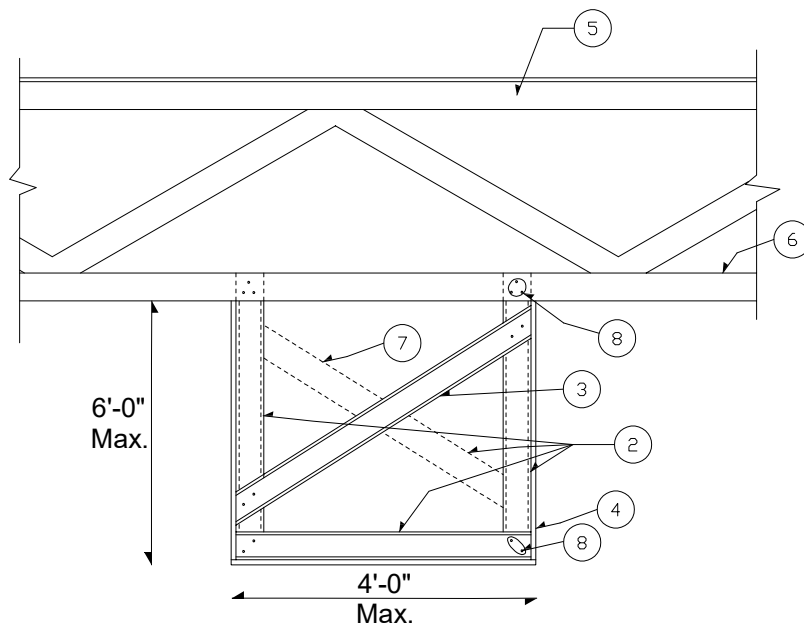
UNDER FORMS. IT SHOULD BE NOTED THAT THE BUILDING DEPARTMENT HAS AGREED TO INSPECT POST INSTALLED ANCHOR INSPECTIONS FOR PROJECTS IF THEY DO NOT HAVE ANY ADDITIONAL SPECIAL INSPECTION REQUIREMENTS. IN THE CASE OF THESE TYPES OF SPECIAL INSPECTIONS (THAT CITY OF LAS VEGAS' STAFF PERFORMS), THEY ARE SCHEDULED AS A #160 CITY OF LAS VEGAS' EXPRESS INSPECTIONS AND THEY ARE CHARGED IN ACCORDANCE WITH THE CURRENTLY ADOPTED FEE SCHEDULE PER DISPATCH SCHEDULED INSPECTION WITH ONE (1) HOURS MINIMUM FOR 160 INSPECTIONS. **CALL THE CITY OF LAS VEGAS' EXPRESS INSPECTIONS AT 702-229-6914 TO SCHEDULE.**

06/06/202

METAL STUD SOFFIT FRAMING DETAILS FOR ATTACHMENT TO WOOD TRUSSES (2021 IBC)



A STEEL STUD SOFFIT FRAMING
(PARALLEL TO TRUSSES)



B STEEL STUD SOFFIT FRAMING
(PERPENDICULAR TO TRUSSES)

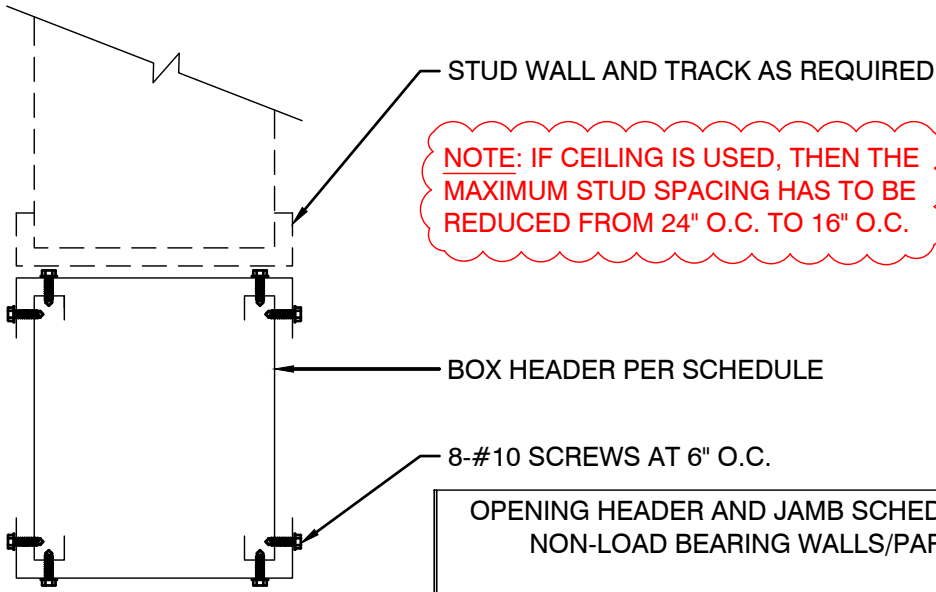
LEGEND:

- ① NEW 2X4 DOUGLAS FIR (LARCH) #1 OR #2 AT 24" O.C. WITH SIMPSON LU24 FACE MOUNT HANGERS (OR EQUAL) AT EACH END.
- ② 362S125-30 STEEL STUDS AT 24" O.C.
- ③ 362S125-33 AT 48" O.C., TYPICAL.
- ④ 1/2" OR 5/8" THICK GYPSUM WALLBOARD PER 2021 IBC
- ⑤ PREMANUFACTURED OPEN WEB WOOD TRUSSES AT 24" O.C.(VERIFY TYPE AND SPACING FROM EXISTING DRAWINGS OR IN THE FIELD)
- ⑥ WOOD TRUSS BOTTOM CHORD
- ⑦ ALTERNATE DIRECTION OF DIAGONAL BRACES.
- ⑧ (3) #10 SCREWS, TYPICAL

NOTES:

- 1. 5 PSF LATERAL LOAD
- 2. F_y (min.) = 33 ksi
- 3. ALL MATERIAL, LOAD AND INSTALLATION SHALL COMPLY WITH THE 2021 IBC.
- 4. 1/2" OR 5/8" GYPSUM WALLBOARD ASSEMBLY PER THE 2021 IBC CHAPTER 25 AND TABLE 2506.2 (TYPICAL)
- 5. THESE DETAILS ARE GUIDELINES ONLY. THE DESIGN PROFESSIONAL MAY SUBMIT ALTERNATE DESIGN AND DETAILS THAT COMPLY WITH 2021 IBC. SEE ARCHITECTURAL PLANS FOR PROPOSED SOFFIT DIMENSIONS.
- 7. THIS DESIGN DOES NOT APPLY TO SOFFIT FRAMING WITH DIFFERENT CONFIGURATIONS OR FINISHES.

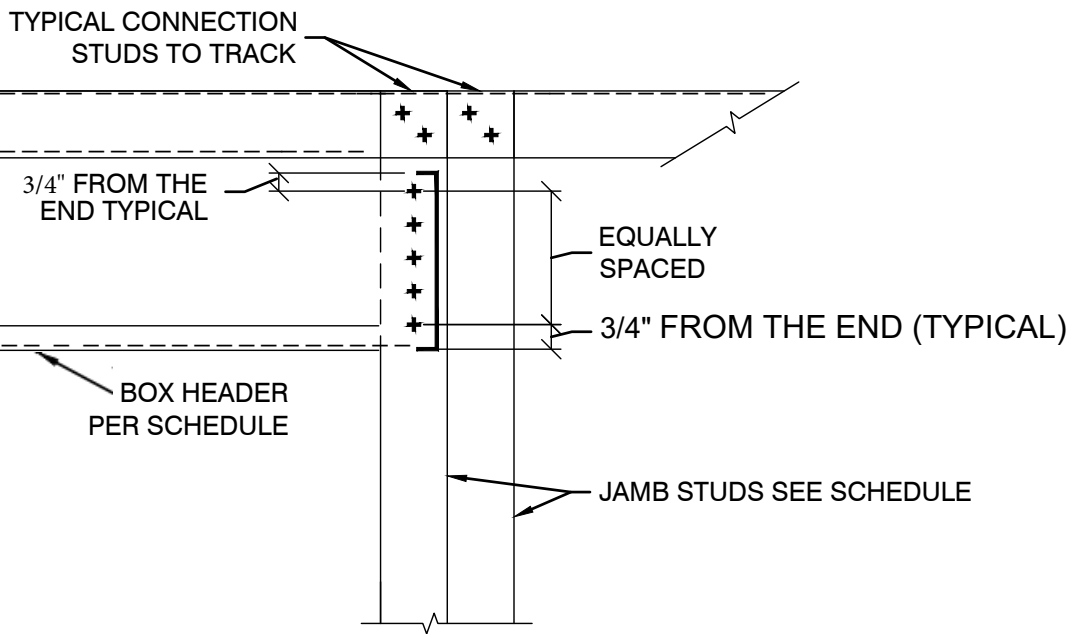
06/06/2023



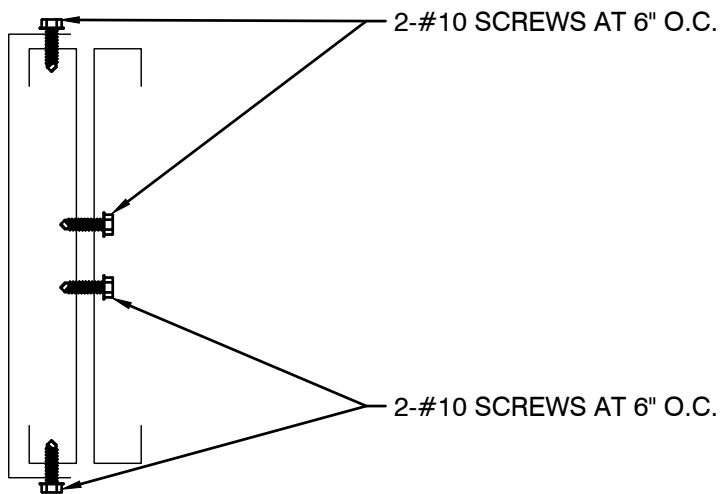
NOTE: IF CEILING IS USED, THEN THE MAXIMUM STUD SPACING HAS TO BE REDUCED FROM 24" O.C. TO 16" O.C.

BOX HEADER
(N.T.S.)

OPENING HEADER AND JAMB SCHEDULE FOR INTERIOR NON-LOAD BEARING WALLS/PARTITIONS ONLY			
OPENING SIZE	BOX HEADER	NUMBER OF SCREWS	NUMBER OF JAMB STUDS INCLUDING CRIPPLE
UP TO 6'-0"	2-600S162-54	7-#10	3

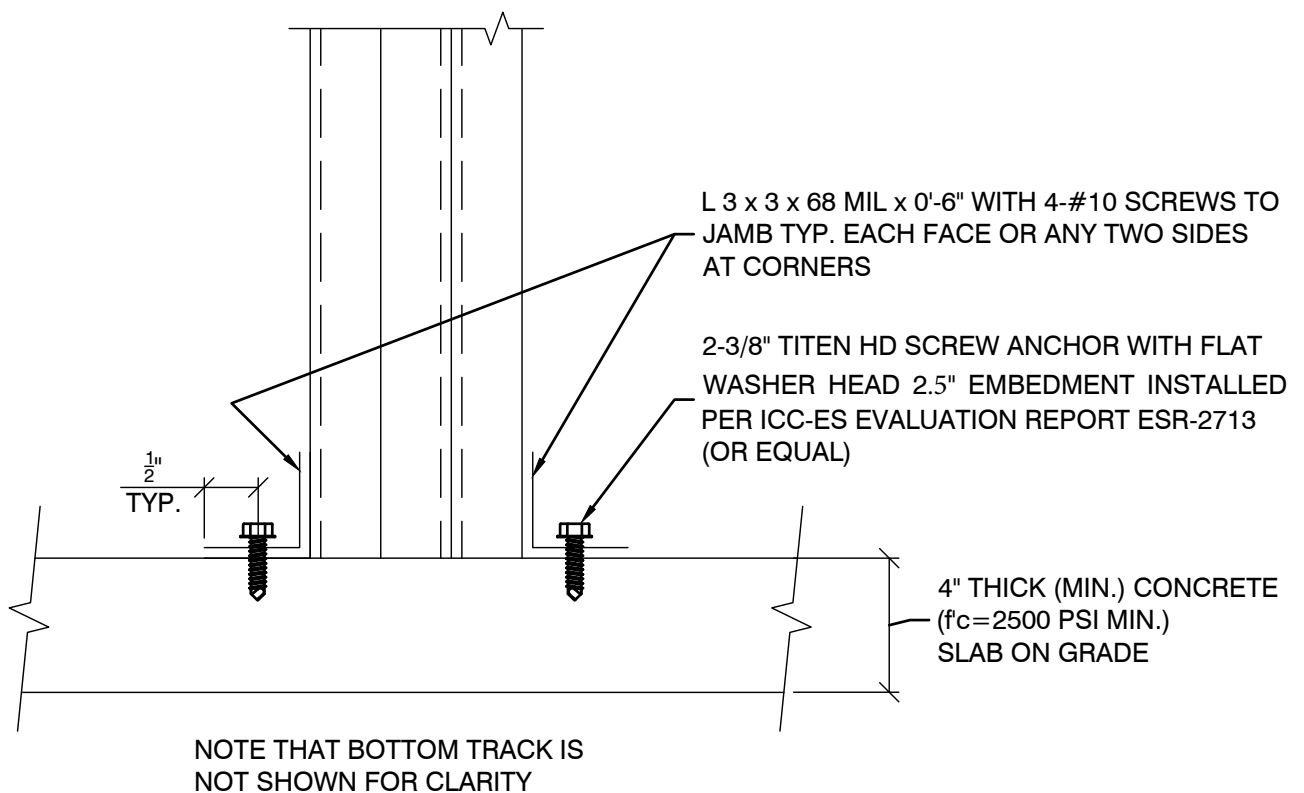


BOX HEADER SUPPORT
(N.T.S.)



STUD BOX JAMB

(N.T.S.)

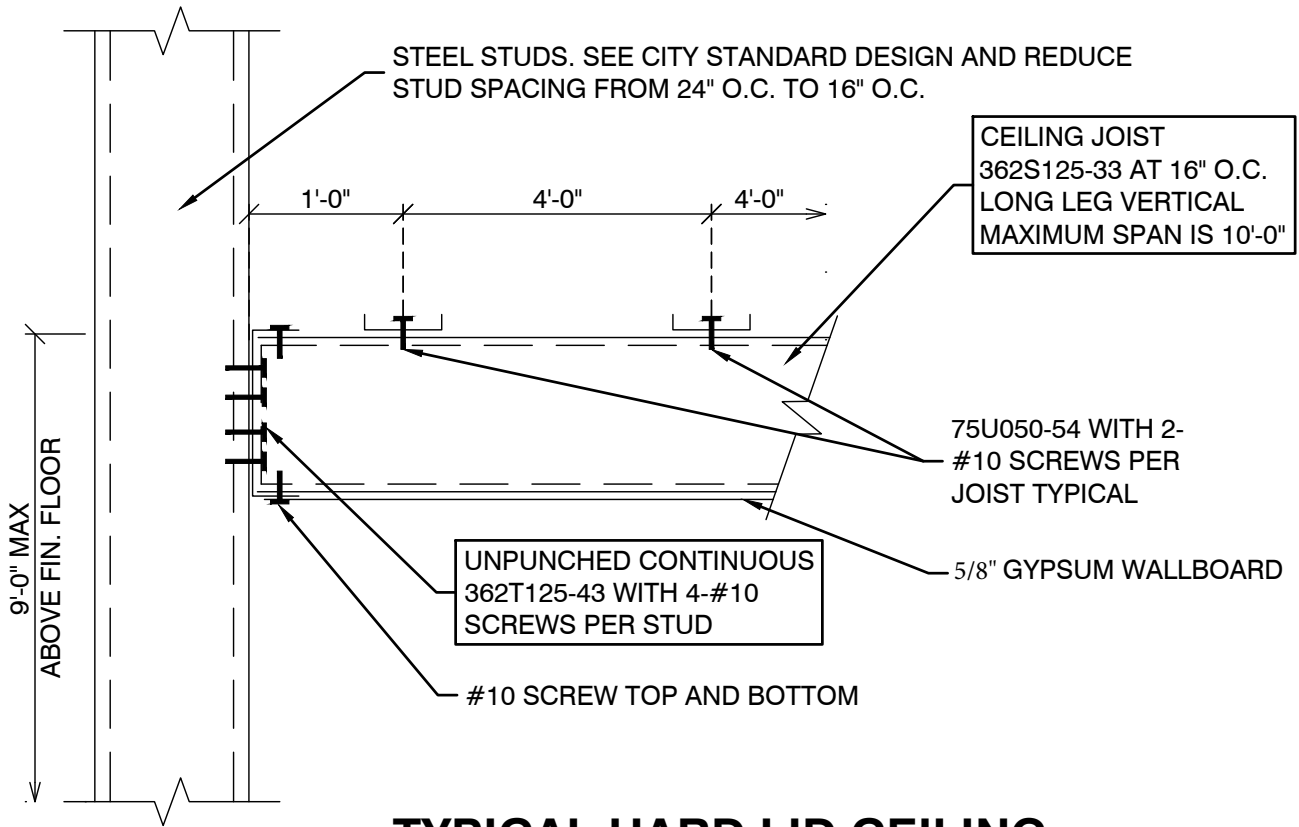


TYPICAL JAMB BASE CONNECTION

(N.T.S.)

06/06/2023

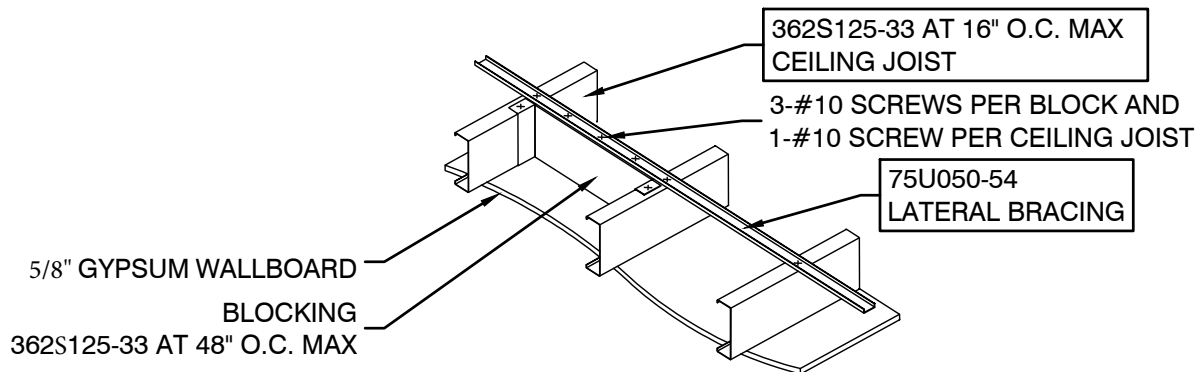
Page 6 of 7



TYPICAL HARD LID CEILING (COLD FORMED STEEL)

NOTES:

- ① IF WEB PUNCHOUTS OCCUR NEAR SUPPORTS, MEMBERS MUST BE CHECKED FOR REDUCED SHEAR AND WEB CRIPPLING IN ACCORDANCE WITH THE AISI S100 I.E. THIS DETAIL IS NOT ALLOWED TO BE USED WITHOUT INDEPENDENT DESIGN/EVALUATION.
- ② CEILING ASSEMBLY IS DESIGNED AS A NON-LOAD BEARING ASSEMBLY I.E. IT IS ONLY DESIGNED TO SUPPORT ITS OWN ASSEMBLY WEIGHT
- ③ WEB CRIPPLING IS BASED ON 1" OF BEARING AT END OF SUPPORTS



CEILING (N.T.S.)

06/06/2023