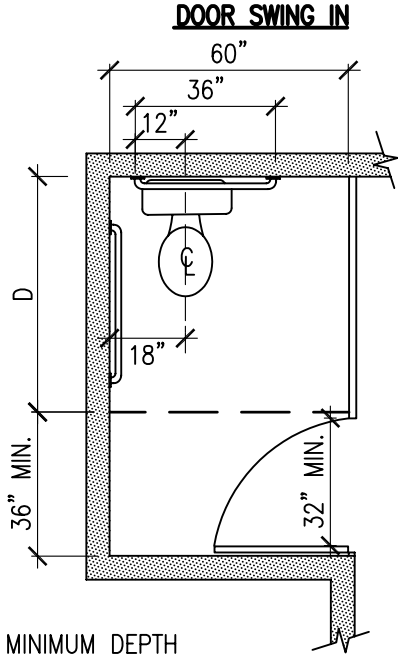


TOILET STALLS PER ANSI A117.1-03

<p><b>Clark County</b> Dept. of Develop. Services 4701 W Russell Rd Las Vegas, NV 89118 (702) 455-3000</p>	<p><b>Boulder City</b> Building Department 401 California Avenue Boulder City, NV 89005 (702) 293-9282</p>	<p><b>Henderson</b> Bldg &amp; Fire Safety Dept. 240 Water Street Henderson, NV 89015 (702) 267-3650</p>	<p><b>Las Vegas</b> Building &amp; Safety Dept. 731 S. 4th Street Las Vegas, NV 89101 (702) 229-6916</p>
--	--	--	--

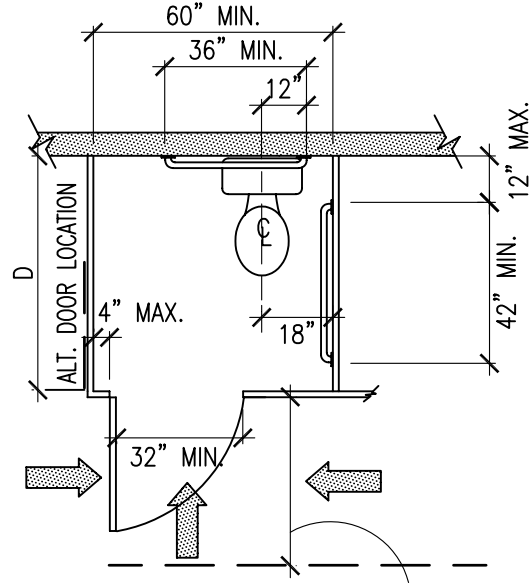
**STANDARD STALLS**



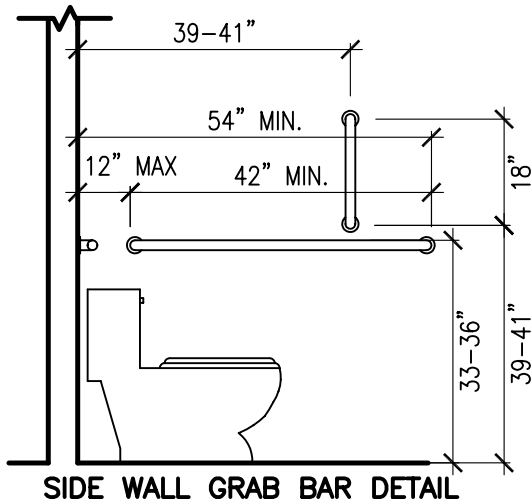
MINIMUM DEPTH  
D=62" WALL MOUNTED W.C.  
D=65" FLOOR MOUNTED W.C.

ALTERNATE STALLS  
ARE NOT ALLOWED  
PER ANSI 4.18  
APPROACHES TO  
DOORS PER ANSI  
4.13

**DOOR SWING OUT**

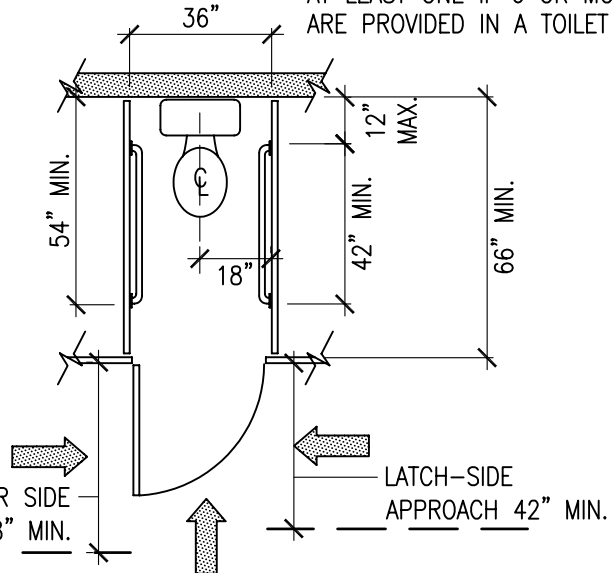


LATCH-SIDE APPROACH 42" MIN.  
OTHER APPROACHES SEE ANSI 4.13



**SIDE WALL GRAB BAR DETAIL**

AT LEAST ONE IF 6 OR MORE STALLS  
ARE PROVIDED IN A TOILET ROOM.



FRONT OR SIDE  
APPROACH 48" MIN.

LATCH-SIDE  
APPROACH 42" MIN.

**AMBULATORY STALL**

<p><b>Mesquite</b> Building Department 10 East Mesquite Blvd. Mesquite, NV 89027 (702) 346-2835</p>	<p><b>North Las Vegas</b> Building Department 2240 Civic Center Drive N. Las Vegas, NV 89030 (702) 633-1577</p>	<p><b>Pahrump</b> Regional Planning District 1210 E. Basin Avenue, Suite #1 Pahrump, NV 89060 (775) 751-3373</p>	
---	---	--	--