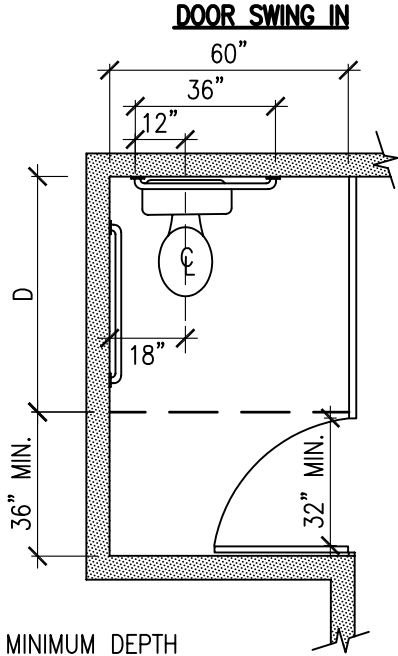


TOILET STALLS PER ANSI A117.1-03

<p>Clark County Dept. of Develop. Services 4701 W Russell Rd Las Vegas, NV 89118 (702) 455-3000</p>	<p>Boulder City Building Department 401 California Avenue Boulder City, NV 89005 (702) 293-9282</p>	<p>Henderson Bldg & Fire Safety Dept. 240 Water Street Henderson, NV 89015 (702) 267-3650</p>	<p>Las Vegas Building & Safety Dept. 731 S. 4th Street Las Vegas, NV 89101 (702) 229-6916</p>
--	--	--	--

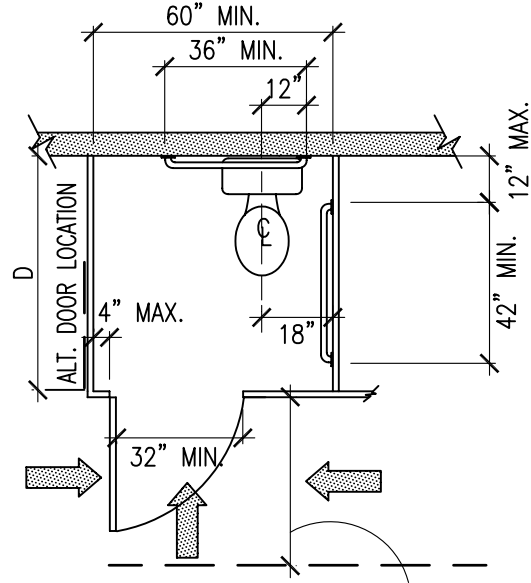
STANDARD STALLS



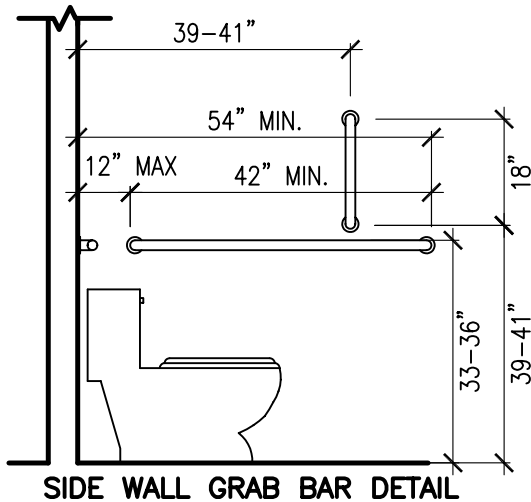
MINIMUM DEPTH
D=62" WALL MOUNTED W.C.
D=65" FLOOR MOUNTED W.C.

ALTERNATE STALLS
ARE NOT ALLOWED
PER ANSI 4.18
APPROACHES TO
DOORS PER ANSI
4.13

DOOR SWING OUT

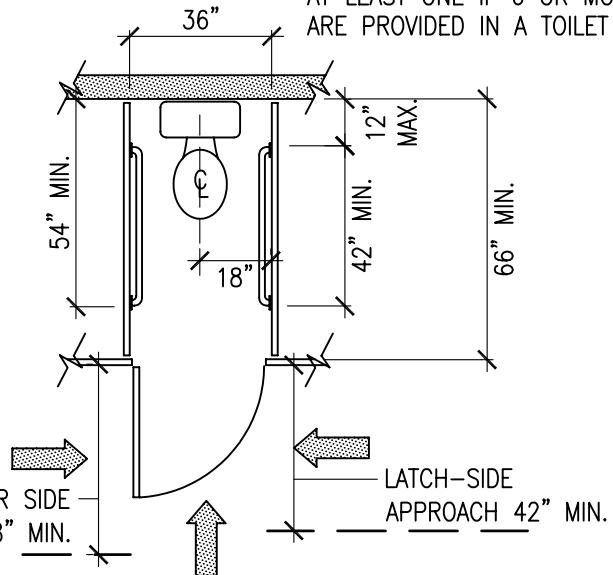


LATCH-SIDE APPROACH 42" MIN.
OTHER APPROACHES SEE ANSI 4.13



SIDE WALL GRAB BAR DETAIL

AT LEAST ONE IF 6 OR MORE STALLS
ARE PROVIDED IN A TOILET ROOM.



FRONT OR SIDE
APPROACH 48" MIN.

LATCH-SIDE
APPROACH 42" MIN.

AMBULATORY STALL

<p>Mesquite Building Department 10 East Mesquite Blvd. Mesquite, NV 89027 (702) 346-2835</p>	<p>North Las Vegas Building Department 2240 Civic Center Drive N. Las Vegas, NV 89030 (702) 633-1577</p>	<p>Pahrump Regional Planning District 1210 E. Basin Avenue, Suite #1 Pahrump, NV 89060 (775) 751-3373</p>	
---	---	--	--