

Exhibit A

**DESCRIPTION**

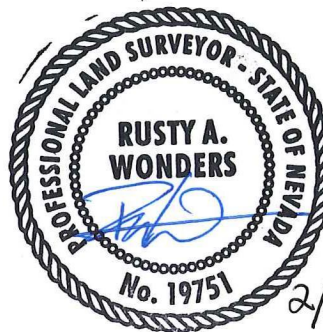
LOTS 1, 3, AND 4 AS SHOWN IN FILE 120, PAGE 49 OF PARCEL MAPS ON FILE AT THE CLARK COUNTY, NEVADA RECORDER'S OFFICE, LYING WITHIN THE EAST HALF (E 1/2) OF SECTION 31 AND THE WEST HALF (W 1/2) OF SECTION 32, TOWNSHIP 20 SOUTH, RANGE 60 EAST, M.D.M., CITY OF LAS VEGAS, CLARK COUNTY, NEVADA.

**TOGETHER WITH** LOTS 1 AND 2 AS SHOWN IN FILE 120, PAGE 91 OF PARCEL MAPS ON FILE AT THE CLARK COUNTY, NEVADA RECORDER'S OFFICE, LYING WITHIN THE EAST HALF (E 1/2) OF SECTION 31 AND THE WEST HALF (W 1/2) OF SECTION 32, TOWNSHIP 20 SOUTH, RANGE 60 EAST, M.D.M., CITY OF LAS VEGAS, CLARK COUNTY, NEVADA.

CONTAINING 250.92 ACRES, MORE OR LESS.

END OF DESCRIPTION.

RUSTY A. WONDERS, PLS  
PROFESSIONAL LAND SURVEYOR  
NEVADA LICENSE NO. 19751



2/24/16  
Exp. 6/30/16