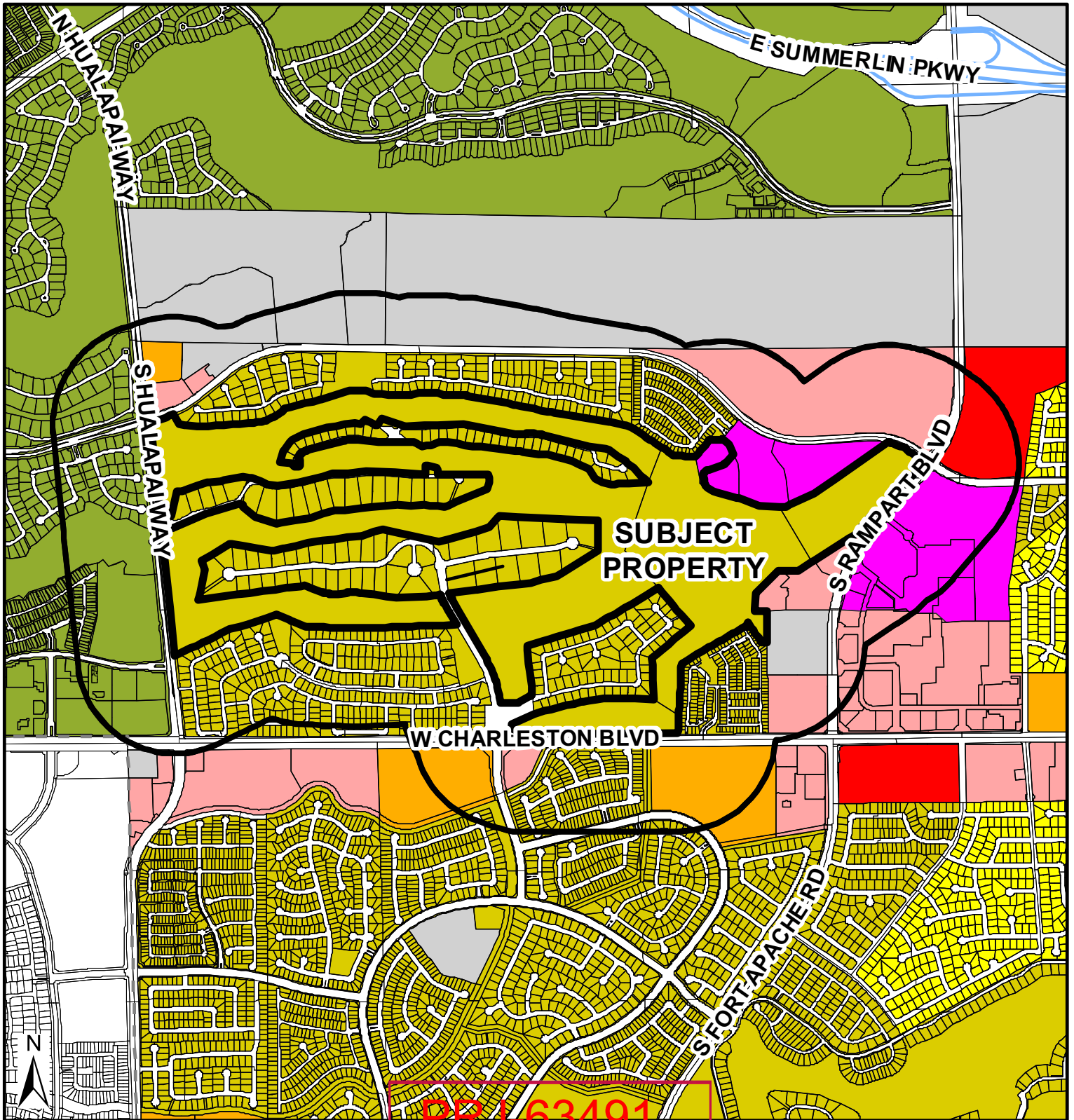


ZON-63601



Zoning

- U - (GPA Designation) Undeveloped
- R-A - Ranch Acres
- R-E - Residential Estates
- R-D - Single-Family Residential-Restricted
- R-PD - Residential Planned Development
- R-1 - Single Family Residential
- R-CL - Single-Family Compact-Lot
- R-2 - Medium-Low Density Residential
- R-3 - Medium Density Residential
- R-4 - High Density Residential
- R-5 - Apartment
- R-MH - Mobile/Manufactured Home Residence
- R-MHP - Residential Mobile/Manufactured Home Park
- P-R - Professional Offices and Parking

- P-O - Professional Office
- N-S - Neighborhood Service
- O - Office
- C-D - Designed Commercial
- C-1 - Limited Commercial
- C-2 - General Commercial
- C-PB - Planned Business Park
- CM - Commercial/Industrial
- M - Industrial
- C-V - Civic
- P-C - Planned Community
- T-D - Traditional Development
- PD - Planned Development
- T-C - Town Center

PRJ-63491
03/16/16

FROM R-PD7
TO R-E AND
FROM PD
TO R-4

- Subject Property
- 1000ft Buffer
- City Limits



GIS maps are normally produced only to meet the needs of the City. Due to continuous development activity this map is for reference only.
Geographic Information System
Planning & Development Dept.
702-229-6301

Date: Thursday, March 10, 2016